

TOURIST HOTEL SITE:  
HERITAGE RESOURCE IMPACT ASSESSMENT

Submitted to

WINNIPEG CORE AREA INITIATIVE

Prepared by

QUATERNARY CONSULTANTS LTD.

July, 1988

## EXECUTIVE SUMMARY

In accordance with the Manitoba Heritage Resources Act, Winnipeg Core Area Initiative commissioned a heritage resource impact assessment of the area known as the Tourist Hotel Site, prior to the development of the location.

Quaternary Consultants Ltd. was awarded the contract and undertook a multi-faceted investigation:

- monitoring of geo-technical drilling,
- surface collection of exposed areas,
- sub-surface auger investigations, and
- backhoe excavations of the parking lot area.

The investigations revealed that numerous historic activities had occurred at the site and was able to confirm the archival information. The depth of the excavations (170 cm) did not reach into the Pre-Contact period (prior to A.D. 1737). The earliest material encountered was a flooring component of a structure associated with a farmstead depicted on an 1848 map of the Winnipeg area. This feature was located at the base of the excavations.

Sequentially, the occupation of the site consisted of:

- the farmstead,
- a grocery store at the corner of Tache and Provencher,
- a grocery store north of the corner,
- the Quebec Hotel at the corner,
- a stable associated with the hotel,
- change of name to the Tourist Hotel,
- conversion of the stable to a garage,
- conversion of the Pelletier grocery to an apartment block,
- demolition of the apartment block,
- expansion of the hotel parking lot.

In terms of heritage resource management, only one discovery requires special treatment. It is recommended that sub-surface modification over the location of the 1848 farmstead be restricted to a depth of one meter or less. A second recommendation is that any sub-surface modifications which are greater than two meters be monitored by an archaeologist.

The recovered artifacts have been catalogued and custody will be transferred from the City of Winnipeg to Manitoba Culture, Heritage and Recreation, Historic Resources Branch.

TABLE OF CONTENTS

1.0	INTRODUCTION.....	1
2.0	HISTORY OF THE SITE.....	1
3.0	METHODOLOGY.....	8
3.1	Monitoring of Geo-Technical Drilling.....	8
3.2	Sub-surface Auger Investigations.....	8
3.3	Surface Collection.....	10
3.4	Backhoe Excavations.....	10
3.5	Laboratory Procedures.....	11
4.0	ARTIFACT RECOVERIES.....	13
4.1	Structural Artifacts.....	13
4.2	Transportation Artifacts.....	14
4.3	Tools and Equipment.....	15
4.4	Housewares.....	16
4.5	Personal Artifacts.....	18
4.6	Dinnerware.....	20
4.7	Containers.....	25
4.7.1	Non-glass Artifacts.....	25
4.7.2	Glass Artifacts.....	26
4.8	Food Products.....	29
4.9	Miscellaneous Artifacts.....	30
5.0	SOIL STRATIGRAPHY.....	32
5.1	Trench 1.....	32
5.2	Trench 2.....	36
5.3	Trench 3.....	40
6.0	INTERPRETATION.....	41
7.0	RECOMMENDATIONS.....	42
8.0	REFERENCES CITED.....	43
	APPENDIX A: List of Artifacts.....	44
	APPENDIX B: Photographic Plates.....	47
	APPENDIX C: Relevant Permits.....	59
	Heritage Permit.....	60
	City of Winnipeg Inspection Permit.....	62
	APPENDIX D: Artifact Inventory Catalog.....	63

LIST OF FIGURES

FIGURE 1: Enlarged section of the 1848 Moody map.....2  
FIGURE 2: Section of the 1873 McPhillips map.....3  
FIGURE 3: An 1880 'Bird's-Eye' View of St. Boniface....4  
FIGURE 4: Section of the 1905 Fire Atlas.....5  
FIGURE 5: Section of the 1955 Fire Atlas.....7  
FIGURE 6: Archaeological Investigations.....9  
FIGURE 7: Soil Stratigraphy of Trench 1.....33  
FIGURE 8: Soil Stratigraphy of Trench 2.....37

LIST OF TABLES

TABLE 1: Structures along Rue Tache (1919).....6

LIST OF PLATES

PLATE 1: Geo-technical drilling at riverbank.....48  
PLATE 2: Power auger investigations at riverbank.....48  
PLATE 3: Backhoe operations.....49  
PLATE 4: Archaeological examination of excavation....49  
PLATE 5: East along Trench 1.....50  
PLATE 6: West along Trench 2.....50  
PLATE 7: Metallic artifacts.....51  
PLATE 8: Horse transportation artifacts.....51  
PLATE 9: Household artifacts.....52  
PLATE 10: Remnants of a wooden pail.....52  
PLATE 11: Shoes from Trench 1.....53  
PLATE 12: Personal artifacts.....53  
PLATE 13: Clay tobacco pipes.....54  
PLATE 14: Ceramic dinnerware sherds.....54  
PLATE 15: Maker's marks on ceramic sherds.....55  
PLATE 16: Complete bottles.....55  
PLATE 17: Glass bottle sherds.....56  
PLATE 18: Miscellaneous glass artifacts.....56  
PLATE 19: Food remains.....57  
PLATE 20: Planks of 1848 structure (Trench 1).....57  
PLATE 21: Detail of Trench 1 (Stratum G, Stratum I)...58  
PLATE 22: Profile of Trench 3.....58

## 1.0 INTRODUCTION

During the spring of 1988, Winnipeg Core Area Initiative, under the Riverbank Enhancement Program, purchased the land and building known as the Tourist Hotel. The site lies at the eastern foot of the Provencher Bridge, on River Lots 706 and 805, Parish of Saint Boniface.

The development plan required the demolition of the structure and the landscaping of the lot into an attractive addition to the public-accessible riverbanks of the City of Winnipeg. Due to anticipated sub-surface modification of some of the site, Winnipeg Core Area Initiative, in compliance with the Manitoba Heritage Resources Act, has instituted a heritage resource management program. The first phase of this program was the initiation of a heritage resource impact assessment of the site. The impact assessment, awarded upon tender to Quaternary Consultants Ltd., was conducted under Heritage Permit #A24-88 (Appendix C) and the appropriate City of Winnipeg Inspection Permit (Appendix C). This report will document the research techniques employed and the archaeological recoveries. It will also provide appropriate recommendations for management of the heritage resources at the site.

## 2.0 HISTORY OF THE SITE

Preparatory to the initiation of the heritage resource impact assessment, K. David McLeod, of Historic Resources Branch, Manitoba Culture, Heritage and Recreation, undertook an archival review of the area. Much of the data in this section is taken from his report, on file with Historic Resources Branch.

The first recorded utilization of the east bank of the Red River is the establishment of a trade post by the Hudson's Bay

Company. This post was built to compete with the Northwest Company's Fort Gibraltar I, in The Forks area. The location of the post is unknown and may be within the development area.

River lots on the east side of the river had been surveyed by George Taylor in 1836-38 (Warkentin & Ruggles 1970:190). Two structures, probably representing a homestead, are depicted in or near the study area on the 1848 Moody map (Figure 1). Given that early survey techniques differed from contemporary methods, and that many points of reference, such as creek mouths, have changed over the last century, the placement of the impact zone upon the Moody map cannot be considered as exact.

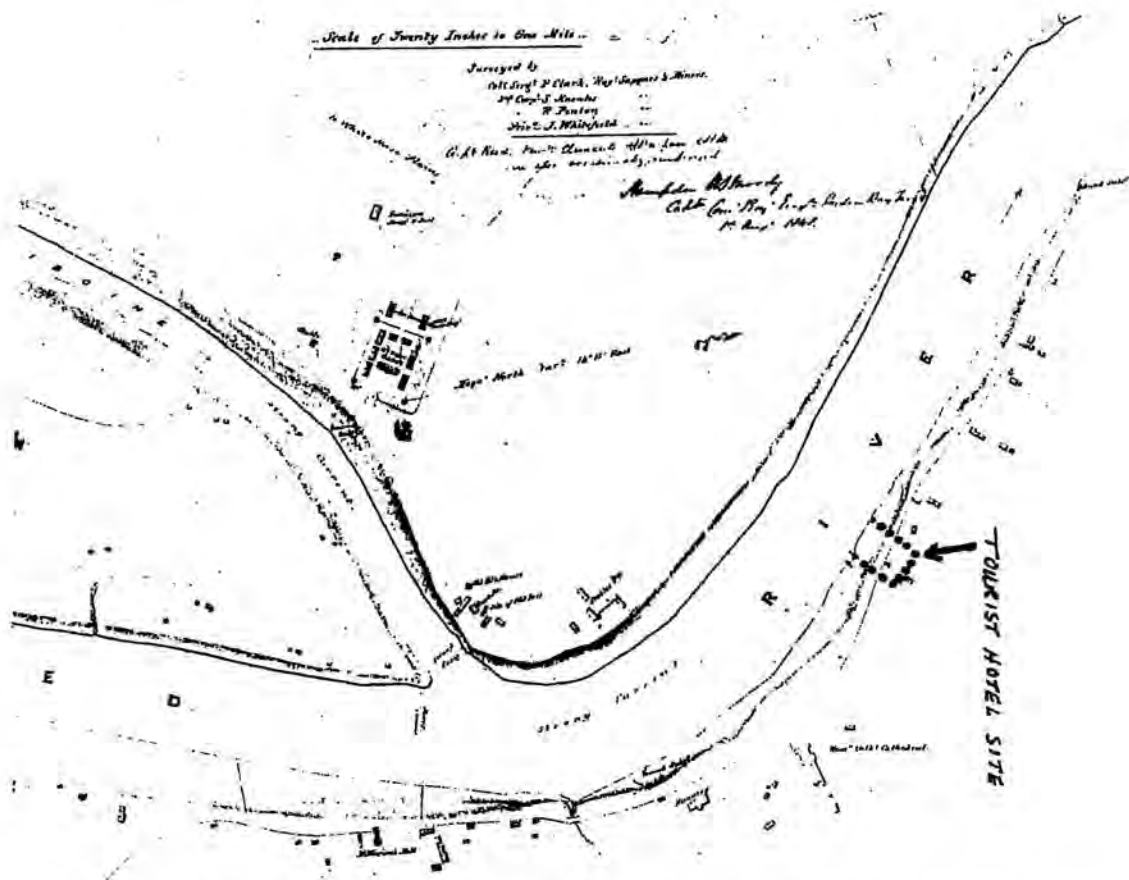


Figure 1: Enlarged section of the 1848 Moody map with Tourist Hotel site superimposed.

An 1873 map (Figure 2) indicates two structures on the site (Warkentin & Ruggles 1970:254). These may be the two homestead buildings, although it is more likely that one of the structures is probably the general office of A.A.C. La Riviere, which is known to have been located at the foot of Provencher Avenue at the Red River in 1876 (McLeod 1988:3).

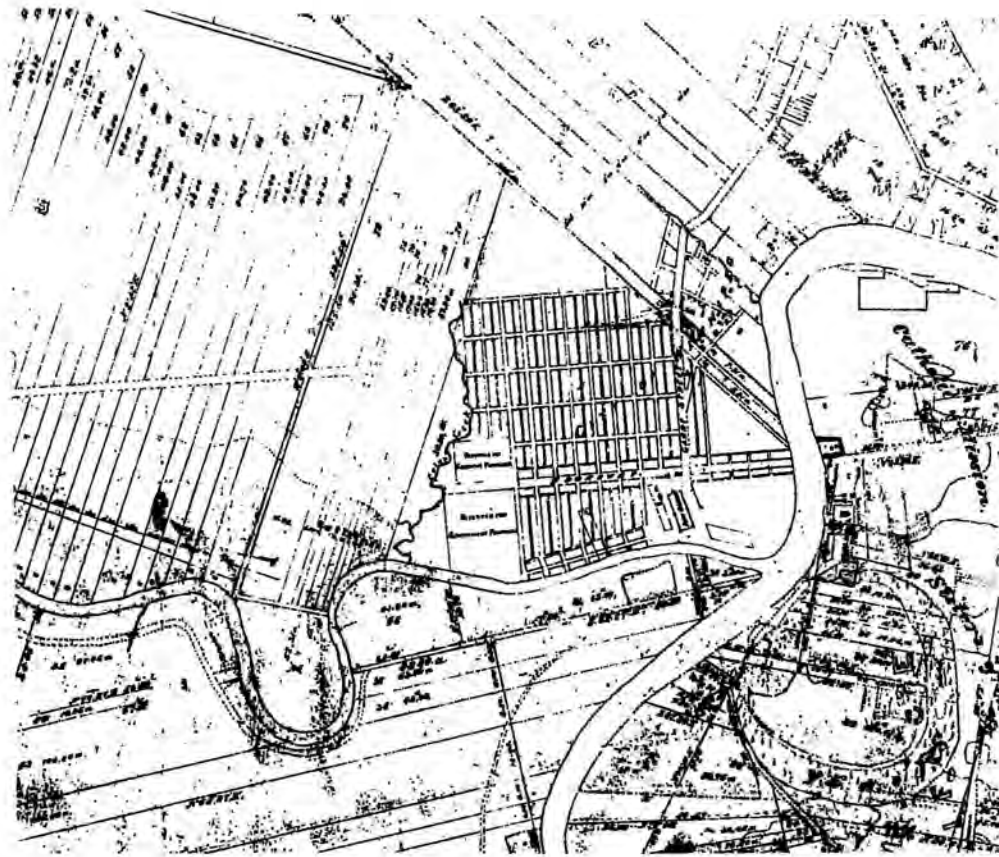


Figure 2: Section of 1873 Dominion Survey Map by Sinclair & McPhillips (Tourist Hotel Site outlined).

An 1880 'bird's-eye view' map (Figure 3) shows four structures on the development area. As well as the La Riviere building, J. Smith's grocery was located at the corner of Provencher and Tache. G. Couture's grocery was north of the corner on Rue Tache. An unidentified building stood between the two stores.

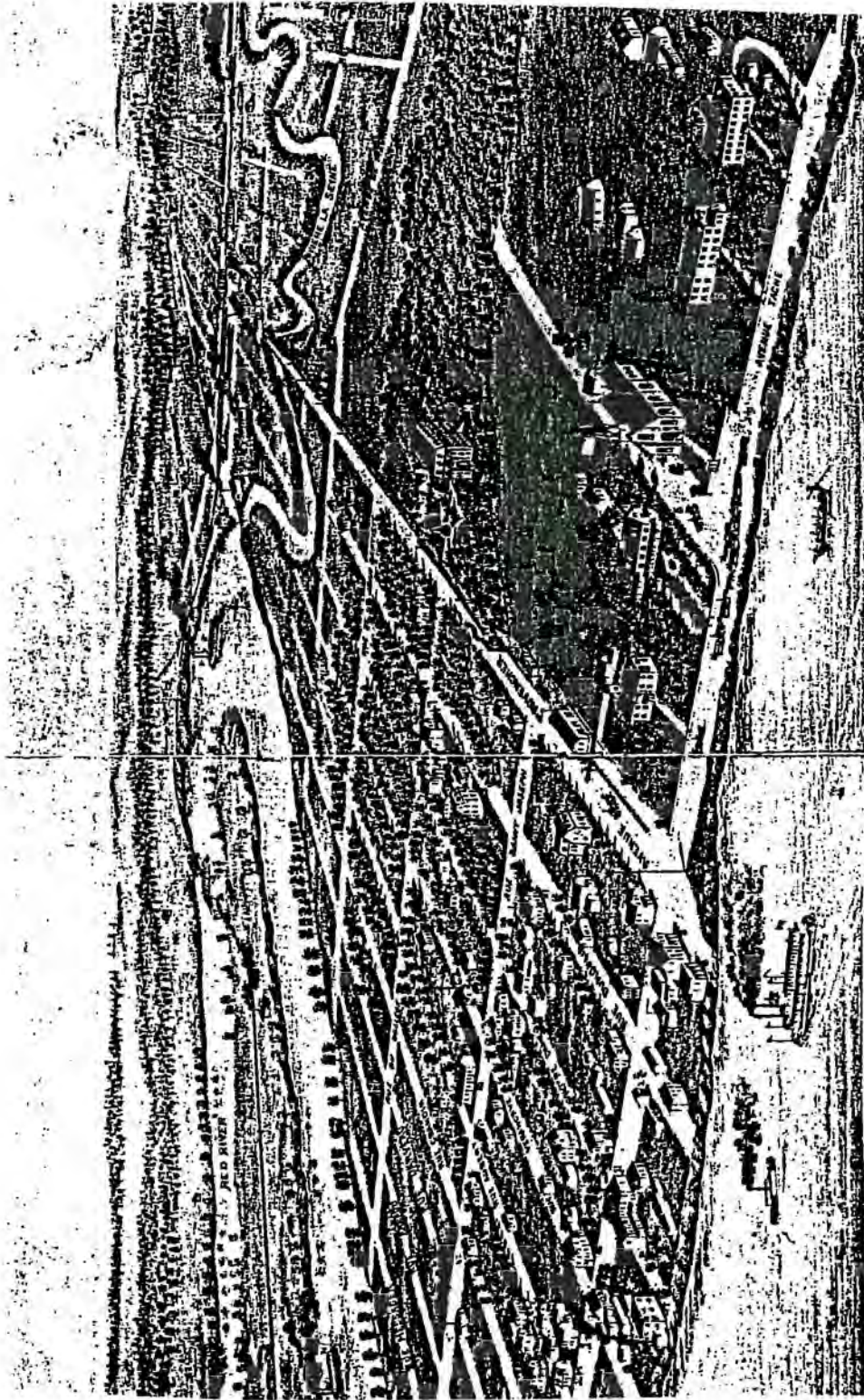


Figure 3: An 1880 'Bird's-Eye' View of St. Boniface  
(from McLeod: 1988)



The Broadway Bridge, connecting Broadway and Provencher Avenues, was constructed in 1882. This bridge was replaced by the Provencher Bridge in 1912 (McLeod 1988:7). By 1905, the Smith grocery store had been replaced by the Quebec Hotel and Billiard Parlour at 539-541 Tache (Figure 4). A feed stable (545 Tache) stood immediately north. The building at 547 Tache was occupied by a sign painter in 1919. The former Couture's grocery, with an attached dwelling, occupied the premises at 549-551 Tache. By 1919, the structure was identified as the Pelletier Grocery and had an attached stable on the northwest corner and a detached shed to the west. A dry goods store stood at 553 Tache. The northernmost building on the block, outside the current investigation area, was the CN Hotel with an attached cobbler's shop (555-557-559 Tache). These structures were fully described in the 1919 St. Boniface Fire Atlas (Table 1).

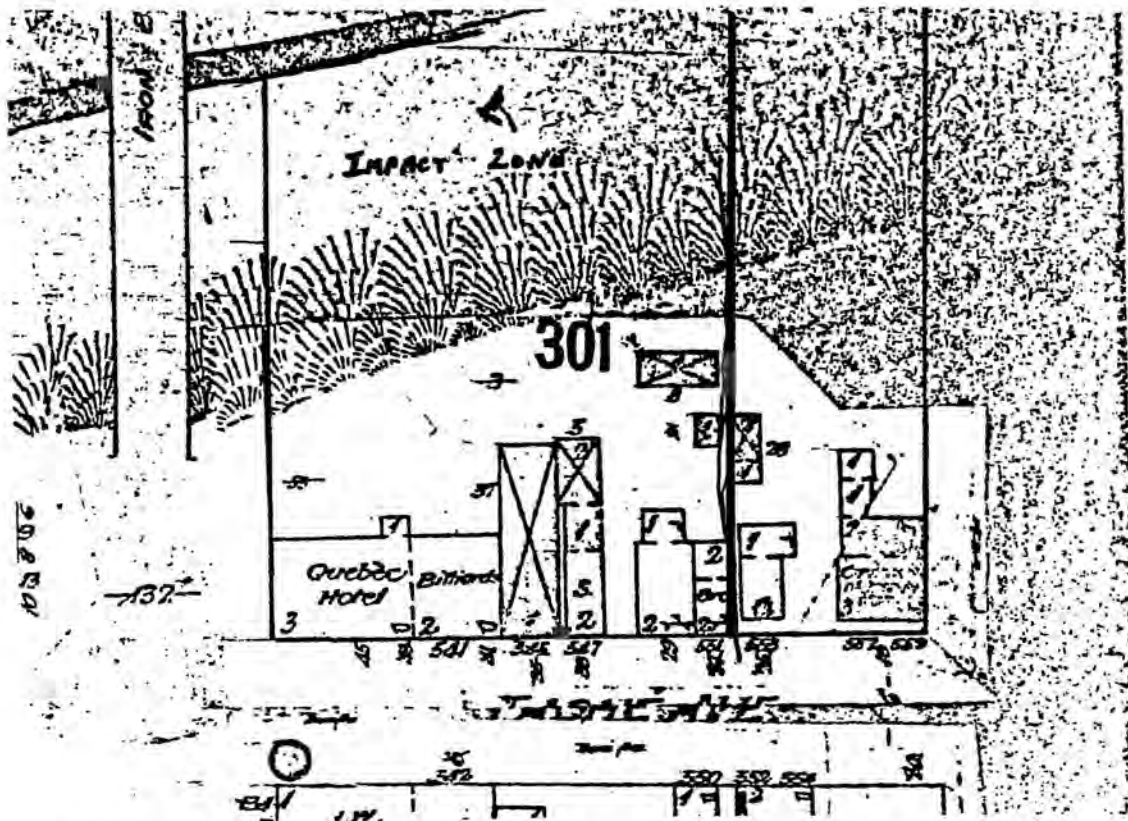


Figure 4: Portion of the 1905 St. Boniface Fire Atlas.

TABLE 1

Street #	Name	Description
539 Tache	Quebec Hotel	3-story frame, tar & paper roof; 1-story frame, wood shingle roof
541 Tache	Barber shop	2-story frame, tar & paper roof, (rooms on second floor)
545 Tache	Feed stable	2-story frame, tar & paper roof
547 Tache	Sign painter	2-story frame, wood shingle roof
549-551 Tache	Pelletier Grocery/ Dwelling	2-story frame, brick basement, metal roof; with 1-story, metal roof attachment on north end (dwelling on second floor)
No #	Stable	2-story frame, metal roof (north west of grocery)
No #	Shed	1-story, wood shingle roof (hen house west of grocery)
553 Tache	Dry goods store	1 1/2-story, wood shingle roof; with 1-story, tar & paper roof attachment
555 Tache	Cobbler	1-story frame, tar & paper roof, attached to 557 Tache
557-559 Tache	CN Hotel (Vacant)	3-story frame, tar & paper roof; 2-story frame, wood shingle roof; 1-story frame, wood shingle roof; 1-story frame, tar & paper roof

Table 1: Structures along Rue Tache from Provencher to Dumoulin Avenue. (Data abstracted from 1919 St. Boniface Fire Atlas)(McLeod 1988:10)

In 1926, the Quebec Hotel became the Tourist Hotel and it is possible that the concrete basement, underlying the structure, was constructed at this time. In 1929, the feed stables, to the immediate north of the hotel, became the Tourist Hotel Garage. The garage was demolished by 1934 and a parking lot (presumably gravel) was constructed in its place. By 1930, the Pelletier Grocery Store and dwelling was converted into a four-suite apartment block. A basement may have been excavated at the time of the conversion, although it is possible that it was built when ownership changed from Couture to Pelletier between 1880 and 1905. The apartment block was demolished in 1961 and the hotel parking lot was expanded to the north. The changes in the building configuration of the area are depicted in the 1955 St. Boniface Fire Atlas (Figure 5). It must also be noted that the street numbering system changed at some point after 1919.

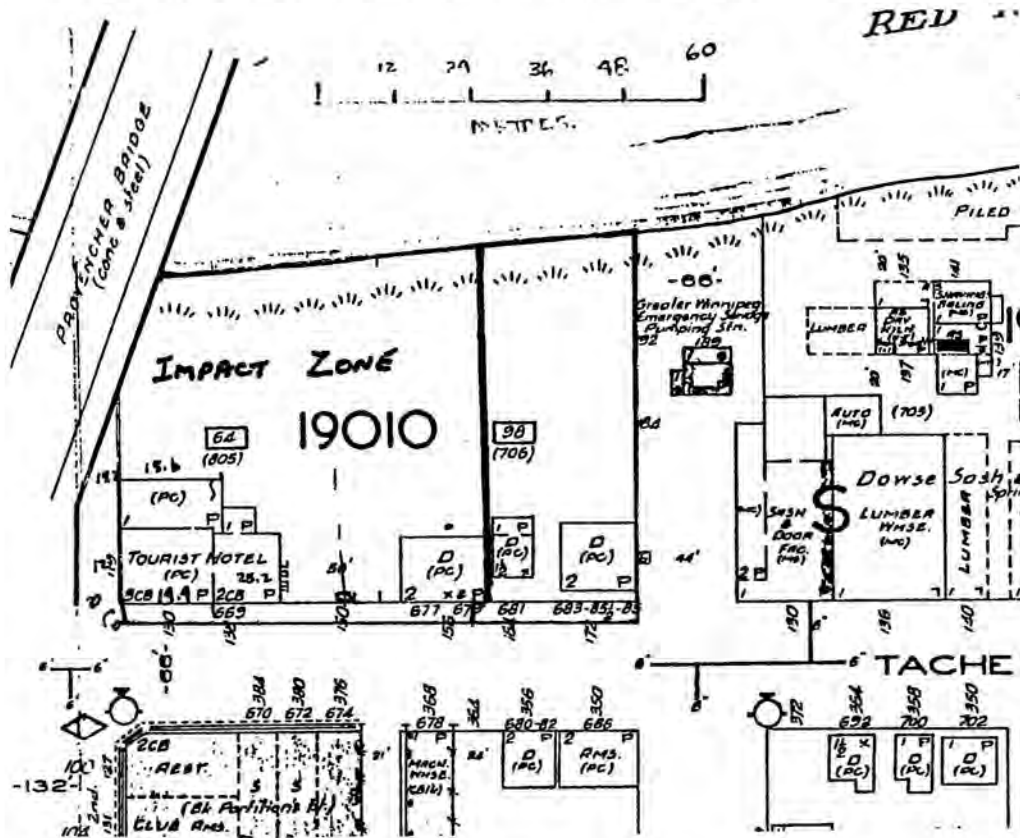


Figure 5: Section from 1955 St. Boniface Fire Atlas

### 3.0 METHODOLOGY

#### 3.1 Monitoring of Geo-Technical Drilling

To determine the soil structure of the site, KGS Engineering drilled four bore holes on the site; two on the riverbank terrace and two on the upper parking lot area (Figure 6). To monitor the archaeological evidence at these bore locations, an archaeologist was on site during the operation on May 27.

The large diameter (16"), truck-mounted auger (Plate 1) drilled down to glacial till or bed-rock. However, only the upper two meters were of archaeological interest. To facilitate examination of the upper strata, the drill crew would deposit the soil to one side, permitting the archaeologist to investigate the material while the drilling proceeded. The depth of two meters was obtained by the second or third auger-full and resulted in the extraction of approximately one cubic meter of soil. This material was picked through by hand, retrieving all artifacts, except bricks, concrete, asphalt, and lumber.

While the procedure permits recovery of artifacts, it does not provide for exact determination of depth of burial of the objects. Relative depths and depth ranges can be estimated by the depth of each drill operation and the soil changes noted on the auger-column, prior to dumping. Measurements of soil strata depths are taken during and after the geo-technical drilling is completed, prior to in-filling.

#### 3.2 Sub-surface Auger Investigation

In accordance with the terms of reference, Quaternary Consultants Ltd. grid-surveyed the riverbank portion of the site, preparatory to implementation of a sub-surface auger

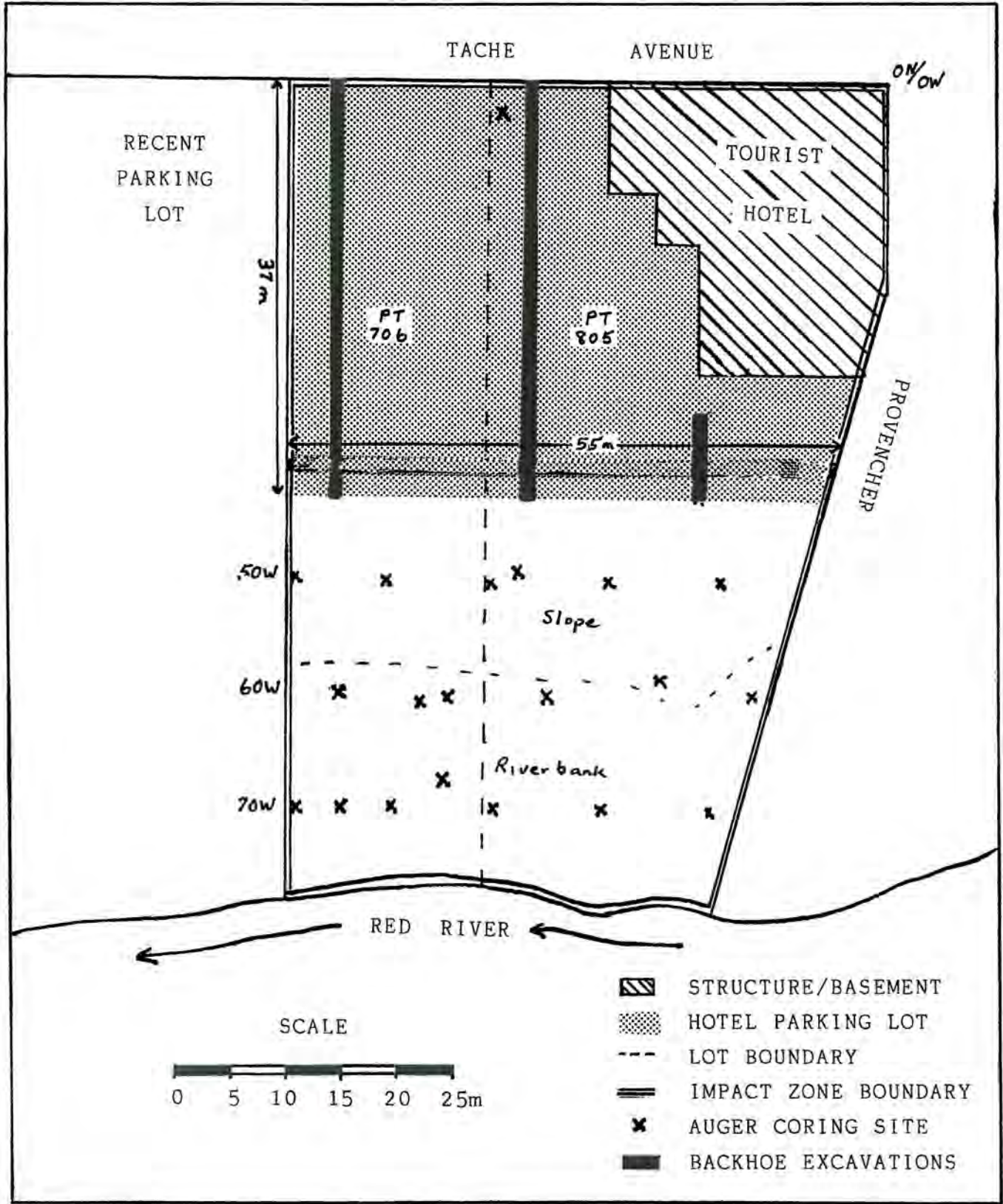


Figure 6: Archaeological Investigations - Tourist Hotel Site

investigation program. Locations, on a 10-meter grid, were selected for investigation (Figure 6).

On May 28, two archaeologists conducted the investigation using a power auger with a 12" (30 cm) bit (Plate 2). Explorations with the auger were taken to depths of one meter plus. Soil was examined as it was expelled by the auger. Soil stratification evidence was recorded when variations were observed. Depths of recovered artifacts were estimated. Only a few of the observed structural artifacts, i.e., concrete blocks, bricks, sawn lumber or asphalt, were collected.

### 3.3 Surface Collection

On May 29, two archaeologists conducted an uncontrolled surface collection of the riverbank portion of the site. Material observed on the slope portion of the site was very recent (less than 20 years old). Some exposed surfaces near the shoreline, in the vicinity of 10-35N/60-70W (Figure 5), yielded datable historic artifacts. Selective collection was made of the most diagnostic specimens.

### 3.4 Backhoe Excavations

The large-scale trench excavations were undertaken on June 10 and 11, using a #680 backhoe equipped with a 24" (60 cm) bucket. The trenches were excavated to a depth of approximately 1.5 meters. The operator would scrape a section of the trench and dump the soil to the side of the trench, whereupon the archaeologists would examine the material (Plate 3, Plate 4). Garden rakes and trowels were used to break up the deposits. All artifacts were recorded, although structural objects (bricks, concrete, etc.) were not retained for curation.

All three trenches were on the asphalt parking lot portion of the site. Trench #1, at 37 meters north of the corner of Tache Avenue and Provencher Avenue, was excavated on June 10. Trench #2, at 50 meters north, was excavated on June 11. A short, exploratory Trench #3, at 16 meters north, was also excavated on June 11. Trench #1 was the longest, extending from the sidewalk (Plate 5) to the west edge of the asphalt (Plate 6), a distance of forty meters (0 - 40W). Trench #2 extended from 12 - 40W, as the basement of the former Pelletier store (and subsequent apartment block) was 12 meters wide. Trench #3 was opened to examine stratigraphy between 35 - 40W.

Provenience was maintained, albeit in large scale. Horizontal units were five meters long (eg., 0 - 5W, 30 - 35W). The trench was excavated in two levels: 0-70 cm and 70 cm to base. While finer control could have been chosen, the thickness and the distinctiveness of the strata enabled adequate determination of relative positions of the artifact-bearing deposits.

### 3.5 Laboratory Procedures

All retained artifacts were washed, identified and curated. Preparation of material for identification and storage required significant time due to the encrusted condition of most material which had been recovered from a clay matrix.

Identification, while of a preliminary nature, relied on several references: glossaries of manufacturer's marks of porcelain and glass containers, Ashdown's 1907 catalogue, reprints of turn-of-the-century catalogues, faunal references, etc.

After washing and identification, the artifacts were computer catalogued using a TRS.DOS data base. The program permitted printing of individual artifact identification cards, for

inclusion in the storage bags with the artifacts, and compilation of artifact catalogue records (Appendix A). Selected artifacts were photographed (Appendix B) and all artifacts were placed into plastic bags for storage.



#### 4.0 ARTIFACT RECOVERIES

In total, 2308 artifacts were retained for curation. Numerous large structural artifacts were recorded during excavation, but it was felt that retention of nearly 100 bricks with no maker's imprint, for example, would create storage and curation problems with no attendant increase in interpretive information. Accordingly, brick, concrete, buried asphalt, wood scraps and large unidentifiable metal scraps were not retained after excavation.

In terms of material categories, glass artifacts were the most numerous. Porcelain artifacts and metal specimens were the next frequent. The artifact assemblage will be described by functional categories.

#### 4.1 Structural Artifacts

A large number of structural artifacts were found during the investigations. A few specimens of brick, concrete and mortar were recovered during auger testing (Plate 2) and were retained as horizon markers. Numerous bricks and pieces of concrete were excavated during the backhoe trenching. These were noted, but not retained for curation. Other structural elements which were collected during the trenching are sections of boards and asphalt and wood shingles. Nine pieces of linoleum, representing at least three different patterns (Plate 9), were found during the excavations. Six sections of water pipe, five of iron and one made of porcelain, were recovered. Three fragments of tubes, apparently related to plumbing, were recovered. In addition, five fragments of sewer tile were curated, as well as 14 pieces of weeping tile.

Windowpane fragments were common; 187 were recovered. Most were plain glass, with the thickness varying from 2.5 mm to 8 mm. The color of the specimens ranged from deep aqua and pale green to clear. Two fragments were decorative, having been etched in floral patterns. A fragment of decorative bathroom tile was recovered.

Structural hardware was also located (Plate 7). Four portions of door locks and a single hinge were recovered. A single large staple and one wood screw were found. A C-shaped iron handle, which could have functioned as a drawer handle or a door handle, was retrieved. Forty pieces of iron wire, of differing diameters, were excavated. The most common structural artifacts were nails. 167 round nails, which post-date 1900, were recovered. One double-headed roofing nail was found. The remaining nails ranged in size from small shingle nails to large spikes. In addition, the investigations retrieved 159 square nails, ranging from small 1" brads to 8" spikes. The square nails were machine-cut; a process where a rolled sheet of iron was cut into tapering lengths and the blacksmith added heads to each of the resultant shanks. This process was developed after 1860, prior to which all nails had been hand-made by blacksmiths.

Evidence of electrification of the structures within the impact area was recovered (Plate 9): a porcelain light socket unit, 5 insulators, and six fragments of electrical wire.

#### 4.2 Transportation Artifacts

Artifacts related to transportation covered the transition from horse-drawn vehicles to automobiles.

The earlier artifacts (Plate 8) included a clump of horsehair,

the bit from a bridle, two horseshoes of different size and a section of harness. Components of wagons or buggies were also recovered: a clevis pin, portions of a tongue and a tongue hitch, and a singletree clevis.

The artifacts relating to the automobile period included a portion of an engine gasket, a portion of a leaf spring, a section of a licence plate (Plate 7) and the rubber molding of an automobile window. A section of angular rod, with an attachment device at one end, is assumed to be a linkage mechanism for an early carburetor. A small section of fine metal screen may be an automotive-related artifact.

Three bolts were recovered, one of which was a carriage bolt (Plate 7). It is not possible to assign these artifacts to a specific function or time period. A large threaded hook was found in Trench 1 and may be part of a vehicle or may be a structural artifact.

#### 4.3 Tools and Equipment

Historical documentation indicates that a cobbler occupied the premises immediately north of the site. The presence of the cobbler's operations, attached to the adjacent CN Hotel, can be confirmed by the presence of scraps of cut leather. All but one of the leather fragments were recovered from Trench 2, between 12W and 25W.

It does not appear that any significant degree of manufacturing was undertaken at the site as very few other artifacts can be interpreted as representing industries, such as blacksmithing. Three types of artifacts may represent some blacksmith activity, perhaps in conjunction with the stable. These items include a portion of bar stock, an iron rod, and 15 pieces of strap iron.

The tools which were recovered from the excavations are varied: a set of calipers, a wrench, a chisel and a nail puller (Plate 7). The nail puller, from Level 1 of Trench 2, has the stamped name of "PLAYFAIR TOBACCO" on the shaft. It is probably a promotional item and would be associated with the Pelletier grocery store. The wrench is severely corroded and the manufacturing firm cannot be identified. Any or all of these tools could have been associated with the store, the hotel, one of the adjacent households or the stable/garage complex.

#### 4.4 Housewares

Artifacts relating to the operations conducted within a household were frequent and varied. A small, fragile, section of a woven straw mat was recovered. Six wooden clothes pegs were recovered (Plate 9). A corroded tin can, completely full of caked laundry bluing (Plate 12), was found during the surface collection of the riverbank area. The remnants of a wooden pail (Plate 10), consisting of three staves with an attached iron handle and the basal iron hoop, were recovered from Trench 2. Another pail (or large can) handle was found during auger-testing at 45N70W.

Two wooden fragments related to furniture; one piece of wicker and a carved section of a chair were found.

Three broom handle sections were recovered. Kitchen artifacts (Plate 9) consisted of a broken whisk-type egg beater, a complete but severely battered graniteware pie plate, and a teaspoon (stamped W. B. 1900). Blade and handle fragments of three different knives were found.

Some evidence of home preserving was found. Two fragments of canning sealers were located; one of aqua and one of amethyst glass. The amethyst sherd (Plate 17) provides two temporal markers. The color indicates that manganese was used as a clearing agent; a practice discontinued after 1914. The basal sherd indicates that it was made in a two-piece centre-post mold. The introduction of the Owens automatic process, after 1906, eliminated mold production. Unfortunately, the sherd was found on the surface, and does not assist in the dating of the various soil layers. A fragment of a red rubber canning sealer ring was found.

In addition, fragments of the base of a trilight-style floor lamp were located in Trench 1. The wick adjuster portion (Plate 18) of a coal oil lamp, as well as seven sherds from at least three different lamp chimneys (Plate 18) were recovered. A sherd of white glass has been tentatively identified as part of the shade from a torchiere lamp. A large fragment of a clear glass globe (Plate 18), from a banquet or Aladdin lamp, was recovered from Level 1 of Trench 2 at 12-15W. The globe has an embossed floral pattern and is thought to date from the turn of the century.

Other glass fragments have been identified as part of three or four different vases, an ornament (?), and an ash tray. The ash tray is identified as a recent style (20 years ago to present), common in hotels and other commercial business establishments. One vase fragment is clear glass. Three of the vases are composed of a colored glass overlaying a white glass matrix. The shapes of the two definite vases are flaring, with irregular castellations on the lip (Plate 18). The colors of the overlay glass are cranberry, lemon and jade green. These items are attributed to the 1920's.

Ceramic fragments have been identified as part of an ash tray and part of a pink figurine. The ash tray fragment (Plate 15), found in Level 1 of Trench 2, is yellow with the letters "WA..." in black, on the lip. It probably represents a promotional article, which was used by the occupants of the Pelletier apartment block. Six thick porcelain sherds are thought to represent a commode, a very familiar household item prior to the development of an urban sewer system. Three red sherds are the remnants of a flowerpot.

#### 4.5 Personal Artifacts

Two categories of personal artifacts were recovered; clothing and accoutrements.

Items of clothing which were identified were a section of a sateen coat lining and several shoes (Plate 11). Most of the shoes were recovered from Level 2 of Trench 1 and appear to pre-date A.D. 1900. The shoes represent at least four individuals; an adult male, an adult female, a small-footed (perhaps adolescent) female and a child. The recoveries included the remnants of a pair of rather fashionable high-laced ladies shoes and a pair of less formal ladies shoes. The mens' shoes included a winter felt/leather composite boot, a commercial moccasin-type slipper and a slipover rubber. The slipover rubber and the winter boot have the embossed logo of the "Canadian Rubber Company, Montreal, Quebec" on the sole.

Several pieces of cloth, some of which appeared to have been sewn, and three different types of ribbon were recovered (Plate 12). Four buttons, three of glass and one of wood (Plate 12), were found.

The most unusual item, recovered during the excavations, was a section of a denture (Plate 12). This specimen, made of a light-weight alloy, had pegs upon which the missing teeth would have been set. Other personal artifacts included a fragment of spectacles lens, a fragment of a locket (Plate 12), and a recent plastic comb.

The investigations found two complete ink bottles (Plate 16); an unmarked, clear glass bottle from 60 cm at 36N70W, and an unmarked, brown porcelain bottle from Level 1 of Trench 1 at 10-15W. Two specimens of writing equipment were recovered; a fragmented ballpoint pen from an auger-test on the riverbank and a broken section of a wooden pencil from Trench 1.

Two toys were recovered. A lid, possibly from the teapot of a child's porcelain tea set, was recovered from Soil Test #1 on the riverbank. A blue plastic toy soldier, of World War II style, was recovered from Level 1 of Trench 2 (Plate 12).

The earliest personal artifacts were fragments of white clay (kaolin) tobacco pipes (Plate 13). Eight unidentifiable stem fragments were found, as well as three specimens which have some marks which identify the manufacturer. One is stamped with "W. & D. BELL/QUEBEC". A second is stamped with "WHITE/GLASGOW" and, in a reversed orientation "&L - S". The third, and most complete specimen, has a reverse "J", without the top bar, embossed on the spur. As yet, the exact dates of manufacture have not been determined, but the pipes would date from the middle to late 19<sup>th</sup> century. A modern equivalent was recovered during the auger testing. A section of cigarette package foil was retrieved from a depth of 20 cm on the slope, at 57.5N50W.

#### 4.6 Dinnerware

372 porcelain sherds were recovered, most of which represent ceramic dishes. Two of the sherds represent artifacts already mentioned under the 'Housewares' category. Some sherds represent ceramic bottles and will be described in the 'Container' section. Many of the sherds with decorative patterns are shown in Plate 14.

Two widely separated fragments of the same black, decorated tea pot indicate the degree of disturbance that has occurred at the site. One sherd was found in the surface material on the riverbank near 25N65W. The excavated sherd was recovered from Level 1 of Trench 2 at 50N25-30W.

Four fragments of a small, green individual-serving tea pot were recovered from Level 2 of Trench 2, adjacent to the location of the former Pelletier store.

Remnants of the lids from two different vegetable dishes were found. Twenty-two sherds, with a red-on-white floral pattern, were recovered from Level 1 of Trench 1 at 0-5W. A single sherd, with a green Arabesque pattern, was excavated from Level 2 of Trench 2 at 15-20W.

One large, multi-colored sherd, decorated in concentric bands of pink, orange and blue, was collected from the riverbank surface. It has been identified as part of a creamer or a sugar bowl. The style of decoration suggests that it was made during the 1920's.

The remainder of the sherds represented various types of dinnerware; bowls, cups, saucers and plates.



Bowls were one of the common dinnerware types. It would appear that at least ten bowls were represented by the 39 sherds that were obviously from broken bowls. One plain brown bowl was represented by six sherds. Most other bowls were represented by one or two fragments. The patterns which were noted include:

- green lines on white,
- multi-colored floral on white,
- a gold band on white,
- a plain white with raised vertical ribs,
- plain white with a scalloped lip, and
- plain white with a raised ridge.

The remaining 26 sherds had no identifying characteristics.

More than ten cups were identified. Again, most of the sherds (30 out of 51) were plain white, with no identifying characteristics. Six blue and orange sherds, either from the same cup or from another cup of the same pattern, were recovered from Trench 2. One was found in Level 1 at 12-15W and five were recovered from Level 2 at 20-25W. The sherds are of a glaze style known as 'Lustreware' which was extremely popular during the 1920's and 1930's. One of the foremost producers of this style, and this particular pattern, was the Noritake company of Japan. Other observed designs were:

- white with pink bands,
- two different multi-colored floral patterns,
- white with a silver band,
- white with a gold band,
- plain white with vertical ribs, and
- vertically-ribbed, plain white with an embossed floral pattern.

A sherd with a green Arabesque pattern was matched with a plate of the same pattern. The plate was imprinted with the name of the pattern ("Chusan") and the manufacturer's logo on the underside of the base.

At least one dozen saucers were represented. In this category, plain white sherds numbered 22, out of a total of 48. The most common design was comprised of two thin gold bands, painted at and below the lip. Fourteen sherds, representing a minimum of two saucers, displayed this pattern, which is also represented by a sherd from a cup. Two sherds of the blue and orange 'Lustreware' pattern were found, matching the previously noted cup sherds. Another well-known pattern, which was represented by a single sherd, is 'Blue Willow'. Other patterns included:

- three different multi-colored floral designs,
- a green floral design on white,
- two different embossed, uncolored floral designs, and
- white with a single brown band at the lip.

One sherd was cream colored.

Eighty-four sherds were identified as part of plates. Some of these provided the most information about the manufacturers and the dates of production. Twelve specimens displayed part or all of the producer's logo (Plate 15). Unfortunately, 5 only showed a part of the Royal Crest, which was used by numerous British ceramic firms, and/or the name of the type of china, i.e. "IRONSTONE". The style of the Royal Crest would indicate that these plates post-date 1855.

Six logos were attributable to specific English manufacturers. These included a design used by John Maddock, of Staffordshire, after 1896. One specimen included the pattern name "Chusan", the Japanese name for Korea, which it controlled from 1895 to 1945. A second basal plate fragment was marked with the pattern name and a sherd from a cup was matched to the set by the pattern.

Another plate was identified as having been made by Henry Burgess, of Staffordshire. The identifying logo was in use from 1864 to 1892.

Another plate was imprinted with a logo from J. & G. Meakin, of Staffordshire. This mark was used after 1890.

Two different trade mark designs were used by W. H. Grindley, also of Staffordshire. The first was used between 1891 and 1925; the second from 1914 to 1925.

The only recognized non-British porcelain artifact is a small basal sherd with "...NIA/AUSTRIA" in a red sunburst. The manufacturer is not identified, but the specimen probably post-dates World War I.

Several different patterns were observed. Specimens of 'Blue Willow' matched the design noted on a saucer sherd. Three sherds were recovered which had a blue scenic design, which appeared to be 'Delft' or a similar style. Floral patterns were frequent:

- two different multi-colored designs on white,
- a blue-green design on white,
- a blue pattern,
- another blue floral design incorporating a 'Greek Key' pattern on the lip, and
- four different embossed non-colored patterns.

Two patterns involving concentric colored bands were recovered; one with purple and the second with blue bands at the lip and shoulder of the plates. The remaining 38 white, unpatterned sherds could not be attributed to any specific plates.

Eighty-eight sherds were too incomplete to be able to be attributed to a specific type of dish. One basal sherd, perhaps from a bowl or sugar dish, had a stamp reading "GR...", possibly from the English firms of Grimwade or Grindley. Another sherd had part of a blue band, perhaps relating to the pattern observed on a plate sherd. One other sherd had a trace of a

purple band and may have been part of the pattern found on a different plate fragment. A small sherd displayed the 'Blue Willow' pattern. Additional designs were concentric grey bands, a blue floral pattern and a pink floral pattern. The remainder were plain white sherds.

Several dinnerware artifacts manufactured from glass were located. One complete jelly tumbler (Plate 16) was recovered from Level 2 of Trench 1. The handle of a glass pitcher(?) was recovered, in association with the cranberry and lemon overlay vases. One sherd appears to have been from a bowl. Six, very thin, clear sherds are probably from a wine glass. 22 sherds represented several drinking glasses, one of which was decorated with a gold design. Another drinking glass sherd was amethyst in color, indicating manufacture prior to 1914.

#### 4.7 Containers

Numerous fragments of containers were recovered during the investigations. These articles had been made of stoneware, porcelain, metal, wood and glass.

##### 4.7.1 Non-Glass Artifacts

The stoneware sherds included specimens of a jug and, at least, four different crocks (Plate 9). The shattered lid of a pickle jar (Plate 9) was found in Level 1 of Trench 2 at 15-20W. Embossing on the top read "THE WEIR", "No. 4", "Pat. March 1st 92 April 16th 1901".

Three types of porcelain bottles were found. The complete ceramic ink bottle (Plate 16) has already been noted in the 'Personal Artifacts' section. Surface collections at the river's edge recovered 22 brown and grey sherds, representing at least four different ginger beer bottles (Plate 15). Parts of the logo of "Douglas & King Limited" of Winnipeg occur on several sherds. This firm manufactured 'King's Old Country Stone Ginger Beer' from 1923 to 1930, at which time the name of the company was changed to "King's Old Country Limited" (Chopping 1978:157). Another sherd was white with vertical ribbing.

Three relatively complete tin cans and three tin can lids were recovered. The laundry bluing tin has already been noted in the 'Housewares' section. A recent aluminum beer can was recovered from a depth of 20 cm, during auger testing at 45N50W. The third tin can is a sardine can (Plate 7), located in Level 1 of Trench 2. At a slightly greater depth, a sardine/corned beef/kipper style key opener (Plate 7) was recovered. One lid is from a cylindrical tin can and another from a cylindrical pail. The third lid is semi-circular in shape and is stamped with the

company name "KIEWEL PRODUCTS CO., CROOKSTON, MINNESOTA" and the text, "Non-taxable. Less than half percent alcohol" (Plate 7). The contents of the container are not listed, but it may represent a can of soft drink syrup.

The wooden pail has already been described. A wooden bung, for a medium to large barrel, was found in Level 1 of Trench 1. Two fragments of packing cases were recovered.

#### 4.7.2 Glass Artifacts

Sherds of glass bottles were the most frequent artifact, resulting in part from the degree of shatter which occurs when a bottle breaks. In addition to the glass sherds, other bottle-related material was found. Twenty corks, some still in the necks of bottles, were recovered. Five pieces of lead foil, used to seal wine bottles, were found, as well as one copper alloy neck seal. Fifteen beer bottle caps were retrieved. Four glass bottle stoppers were found, as well as two Codd-bottle marble seals and two Hutchinson iron-hook seals.

One complete beer bottle and numerous fragments of beer bottles were recovered. The color of the sherds included various shades of aqua, pale green, clear and brown. As would be expected, the identifiable specimens were of local manufacture. The complete bottle (Plate 16) was produced by E. L. Drewry Ltd., of Winnipeg, and has a basal mold number of '07'. Other bottles, represented by sherds, were manufactured by the Winnipeg firms of Blackwood's Ltd., E. L. Drewry Ltd. and McDonagh & Shea. The McDonagh & Shea sherds, the only early brown specimens, date between 1890 and 1926. The bottles from the other breweries were probably made around World War I. Some recent brown beer bottle sherds, as well as some of the caps, are identified as Labatt's and Molson's.

Other alcoholic spirits bottles were identified; brandy, wine and whiskey. One complete whiskey bottle was found. A heart-shaped, flat sided flask bottle (Plate 16) was recovered from Level 1 of Trench 1, at 0-5W. A nearly complete, but extremely fragmented, very early brandy bottle (Plate 18) was recovered. It is hand blown and has a flattened area, with a laid-on ring, on the neck for a wax seal. This would date the bottle to the middle of the nineteenth century. This specimen was in Level 1 of Trench 2. Other early bottles include several sherds of 'case gin' bottles. Made of green or olive glass, these bottles had flat sides with fine vertical ribbing. One sherd is embossed with "MELCHER'S/...SHLIEDAM". Melcher's is a British firm and Shliedam is a Dutch city, near Rotterdam. This, and other specimens, would date to the latter half of the nineteenth century. Many of the wine bottles, also, appear to pre-date 1900. Most of the basal sherds had extremely high kick-ups, indicating an early date. Some of the unassigned sherds, no doubt, are attributable to more recent cylindrical spirits bottles.

Soft drink/soda beverage containers were well represented. One complete bottle was recovered. It has a Hutchinson closure and is embossed with the name of "O'KELLY BROS/& CO./WINNIPEG" (Plate 16). This firm was in operation in 1895. At least three different aqua, Hutchinson closure, bottles are embossed with portions of "WEST & CO./WINNIPEG/GINGER ALE". Several additional sherds show evidence of the distinctive panelled base of this particular bottle style (Chopping 1978:145). These bottles would date to the turn of the century. Another local merchant's product was also represented; a sherd of a Hutchinson closure bottle has been identified as a Blackwood's soda bottle. A portion of an early, aqua, "Coca Cola" bottle was recovered, as well as part of a "Mission Orange". Another basal sherd was

embossed with the logo of the Liberty Glass Company of Sapulpa, Oklahoma. This company came into existence in 1919. Another sherd is embossed "G.L.C.C./46"; as yet, an unidentified logo. Two other unidentified bottles are represented. One has an embossed star on the upper body. The other has white lettering on a blue background, painted on clear glass.

Two complete medicine bottles (clear and brown) were recovered (Plate 16). Some sherds of blue glass probably represent "Milk of Magnesia" bottles. No other brands or medicine companies can be identified. One sherd is embossed with "W.T.Co./14", identifying the bottle manufacturer as Whitall-Tatum of Millville, New Jersey (Toulouse 1971:544). This firm produced standard medicine bottles for chemists from 1857 to 1938. Another sherd was embossed with "ST. N". Two sherds were marked with a "D" in a diamond, indicating manufacture by the Canadian firm, Dominion Glass, after 1913.

Four long-necked fragments probably represent condiment bottles, of the Lea & Perrins type. Another product container is represented by sherds embossed with the name of the Horlicks Malted Milk Company of Racine, Wisconsin (Plate 17). The container appears to have held more than one gallon, and probably is associated with the restaurant of the Quebec Hotel or the Pelletier grocery. Unfortunately, it was recovered from the surface at the riverbank.

The complete ink bottle has been noted in the 'Personal Artifacts' section. The two canning sealer sherds were discussed in the 'Housewares' section. The last, identifiable container is a sherd from a small, clear, wide-mouthed bottle, with a screw lip. The specimen resembles bottles used to contain salves, such as Vaseline. Some sherds of white glass were recovered, including one lid (Plate 18). These may represent decorative



bottles and small jars, used for toiletry products.

In summary, six complete bottles and a jelly tumbler were recovered; two ink bottles, a whiskey bottle, two medicine bottles, a beer bottle and a soda drink bottle. Most appear to pre-date World War I. Most of the 709 glass sherds represent bottles of one purpose or another; the non-bottle fragments have been described in the appropriate sections.

#### 4.8 Food Products

A wide variety of food product residue (Plate 19) was recovered. The seeds of a peach and a plum were found, as well as a hazelnut, a walnut and an acorn. Some evidence of imported foods was found. Four fragments of coconut husk were recovered from both Trench 1 and Trench 2. Another extra-local product which was recovered consisted of numerous oyster shells. Seventy-two shells were found, the majority from Trench 1. It is likely that they were served at the Quebec Hotel restaurant.

The majority of food remains were bone residue (Appendix A). Three elements of fish were recovered, one of which could be identified to freshwater drum (commonly known as sheepshead or Red River bass). Six medium bird bones, tentatively identified as chicken, were found.

Mammals comprised the majority of the bone sample. Two specimens of rabbit were recovered. Most of the bones of larger animals showed evidence of having been sawn. Remains from medium size animals included twelve pig bones and two sheep bones. Also, ten ribs and vertebrae of that size class were found. Large mammal bones, most probably from cow, numbered sixty-four, including 16 ribs and 10 vertebrae. An interesting observation was the variation in the thickness of the meat cuts between the

recoveries from Trench 1 and Trench 2. Round steak cuts from Trench 1 were 3/4" to 1" thick, while the same cut from Trench 2 was 3/8" to 1/2" thick. A similar disparity existed with T-bone steak and pork chop cuts. Apparently, the guests at the hotel dined much better than the owners of the adjacent grocery store.

#### 4.9 Miscellaneous Artifacts

This section will describe those artifacts which do not fit into the previous categories. Functions can occasionally be assigned, but often the material is too fragmented or corroded for reasonable identification.

Some elements relating to heating were collected. Clinkers and pieces of anthracite coal were noted during the auger testing and the backhoe excavation. Most were not retained. Twenty-eight fragments of a black, glassy slag were found. These fragments suggest intense heat and may be the residue from a blacksmith's forge.

Several coils of birch bark were found, mostly in Trench 2. The coils were usually about 8 cm wide. No function can be attributed. Another wooden artifact, for which a function is unknown, is a short (10 cm) peg, roughly carved to a round point, made from a section of milled softwood.

A short section of rawhide thong, with a knot at one end, was recovered. The remainder of the artifacts are also too fragmentary for identification. Iron fragments (53) are probably the remnants of tin cans, while the 17 iron scraps may be waste material from the postulated blacksmithing activity. The bakelite fragment may be part of the ignition system of an automobile. The rubber fragments may represent automobile tires, rubber boots, etc. Some wooden fragments have been described in

other sections, the remaining items are too incomplete to identify. Also unidentified are the original iron materials whose corrosion resulted in the development of rust/clay concretions.

Five artifacts have yet to be identified. All are made of iron and demonstrate some degree of rusting. All appear to be incomplete and function or identity cannot be hypothesized from the remaining portion.

## 5.0 SOIL STRATIGRAPHY

During and after the backhoe excavations (Figure 5), the profiles of the exposed walls of the trenches were mapped. These profiles illustrate the sequences of soil deposition at the site. Various cultural and natural events have left their imprint upon the site, demonstrated by the numerous discrete soil horizons which were uncovered.

### 5.1 Trench 1

Trench 1 (Plate 5) was perpendicular to Rue Tache, 37 meters north of the intersection with Provencher Avenue. It extended from the sidewalk (at 0 West) to the end of the asphalt parking lot (at 40 West). The depth of excavation was approximately 170 cm, except for the western portion where a concrete slab was encountered at 110 cm.

The profile of the trench is depicted as Figure 7. To a certain extent, the soil layers are generalized. Minor variations of soil texture or color, within a particular level, are not noted.

The upper four strata, or layers, are the result of parking lot construction. Stratum A, the asphalt layer, extends the full length of the trench and averages 10 cm thick. Stratum B is a 10 cm thick layer of light colored sand and gravel, and occurs in the eastern section of the trench. Stratum C is a layer of dark colored coarse gravel. It extends across the parking lot, with depths varying from minimal to 20 cm. Stratum D is a pocket of mixed grey clay and gravel. This layer occurs between 18W and 28W, with a maximum thickness of 24 cm. It appears to have been deposited to raise the ground level prior to the spreading of the gravel layers. These four layers contained very few artifacts. The recovered artifacts were very recent.

Stratum E is a layer of olive-black clay which extends the full length of the trench. This layer represents the ground surface during the period from 1930 to 1960. Numerous recent artifacts were recovered, confirming the estimated date. Stratum F is a discontinuous layer of grey clay, bearing minimal numbers of artifacts. This stratum could be the result of dumping of clay, excavated from another location, or the deposits of the 1950 flood. Stratum H is a layer of nearly sterile blue-grey clay, placed over the concrete slab in the western portion of the trench. The slab is the floor of a gazebo-like outbuilding associated with the operation of the Tourist Hotel. This structure is noted on a 1927 aerial photograph. The date of demolition is unknown. After demolition, the clay of Stratum H was deposited to raise the ground level of the western portion of the site. Included in the layer are two ash lenses and a cinder lens which may indicate that the deposition was not a single occurrence, but occurred over a period of time.

Stratum G represents the period during which the Tourist Hotel Garage was in operation (1929 -1934) (McLeod 1988:7). This layer is marked by black, oil-saturated clay and contains artifacts relating to automotive transportation. Stratum I represents the period of the Tourist Hotel Stables. These stables were built in conjunction with the Quebec Hotel and continued in operation until the conversion to the garage in 1929. This layer consists of reddish brown straw, sawdust and manure (Plate 21). The artifacts included horseshoes, horse hair, portions of harness and wagons, along with hotel restaurant debitage. The configuration of the level indicates that an 80 cm (nearly three foot) drop occurred at 20W, resulting in a moderate terrace to the west of the stables.

Stratum J is a small pocket of sand, apparently used to level the ground surface near the sidewalk. The top of Stratum L and Stratum K appears to represent the ground surface prior to the establishment of the stables. Stratum L contained numerous artifacts, with a strong representation of personal and houseware items. This layer is interpreted as the use of a depression as a garbage deposition area. Stratum K, occurring at the same level, contained no artifacts. The matrix was a grey clay which appeared to have been deposited in a manner which resulted in a lamellar structure. A probable interpretation is that this layer represents the clay and silt deposits resulting from the 1882 flood.

Stratum M and Stratum N may be the result of a single natural event. It is hypothesized that Stratum M is the upper level of the silts deposited during the major flood of 1852. Stratum N could have been deposited, within a constrained area, by the waters of that same flood. The main reason for this interpretation is that the base of Stratum N overlies horizontal wooden planks (Plate 20), oriented in a ESE-WNW direction. Given the nature of the artifacts recovered from Stratum L, directly above, it appears that the planks are associated with the farmstead depicted on the 1848 Moody map (Figure 1).

To summarize, two probable and three possible flood events are illustrated by the soil stratigraphy:

- Stratum F: may represent the flood of 1950,
- Stratum K: probably deposited by the flood of 1882,
- Stratum M: probably deposited by the flood of 1852, and
- Stratum N: probably deposited by the flood of 1852, also.

Three of the lower and one of the upper layers represent cultural episodes:

- Stratum L: dumping location between 1852 and 1900,
- Stratum I: stable refuse deposition between 1900 and 1929,
- Stratum G: garage operation period from 1929 to 1934,
- Stratum E: deposition of refuse after 1939, which was subsequently spread to level the ground.

Ground modification activities are represented by

- Stratum H: fill added over the foundation of the gazebo,
- Stratum D: fill added to a depression prior to gravelling,
- Stratum C: gravel imported for the establishment of the parking lot,
- Stratum B: gravel added to parking lot, and
- Stratum A: asphalt paving of parking lot.

## 5.2 Trench 2

Trench 2 was perpendicular to Rue Tache, 50 meters north of the intersection with Provencher Avenue. It extended from the edge of the former basement under the Pelletier apartment block (at 12 West) to the end of the asphalt parking lot (at 41 West). The depth of excavation was approximately 170 cm.

The profile of the trench is depicted as Figure 7. As in the profile of Trench 1, the soil layers are generalized. Minor variations of soil texture or color, within a particular level, are not noted.

The top three layers are the result of parking lot construction. Stratum A, the asphalt layer, extends the full length of the trench and averages 10 cm thick. Stratum B is a 10 cm thick layer of light colored sand and gravel, and it occurs throughout the trench. Stratum C is a layer of dark colored coarse gravel.

It extends across the western portion of the parking lot. Evidence of a major soil slump can be seen at 24W. It is unclear if two separate episodes of slumpage occurred. The first asphalt layer dips to a depth of 70 cm at the slump line. Gravel fill was added and the area was re-paved. The position of a second Stratum B below Stratum C may indicate that a prior slumpage had occurred. It may also be indicate that the gravel for the initial establishment of the parking lot was hauled from two different locations.

Stratum E is a layer of olive-black clay which extends the full length of the trench. This layer represents the ground surface during the period from 1930 to 1960. Numerous recent artifacts were recovered, confirming the estimated date. Stratum O is a small lens of black loam, which may represent a garden or flower bed associated with the Pelletier apartment block. Stratum P is a lens of wood and ash adjacent to the apartment building. Stratum F is absent in this profile and the interpretation of this layer as the result of the 1950 flood may be invalid, as deposits should have occurred at Trench 2 as well as Trench 1.

Stratum G is a layer marked by black, oil-saturated clay and contains artifacts relating to automotive transportation. It may be directly related to the Tourist Hotel Garage, or it may be the result of automotive activity by the inhabitants of the apartment block. The time period in either case would begin circa 1929 and continue into the 1930's or 1940's. Stratum I represents the period of horse-drawn transportation. The deposits may have derived from the stables associated with the hotel or with horses maintained in the stable north of the Pelletier grocery (Table 1). As in Trench 1, the layer consists of reddish brown straw, sawdust and manure. The artifacts included horseshoes and portions of harness and wagons, along with housewares. The configuration of the level indicates that



the slumpage downwardly dislocated the stratum by about 80cm.

The top of Stratum K appears to represent the ground surface prior to the establishment of the stables. This layer contained very few artifacts. The matrix was a grey clay which appeared to have been deposited in a manner which resulted in a lamellar structure. Within the stratum, two features were noted. The first was a pile of fieldstones at 30W, at a depth of 110 cm. This may represent the remnants of a garden wall. The second was an ash lens at the slump line. It has been proposed that this layer represents the clay and silt deposits resulting from the 1882 flood. The evidence from Trench 2 does not disconfirm the hypothesis.

Stratum M uniformly underlies the other strata. The slumpage is not evident, although this may be a result of truncation of excavations, prior to reaching the base of Stratum M. No artifacts were recovered from this layer. It has been hypothesized that Stratum M is the upper level of the silts deposited during the major flood of 1852.

To summarize, two probable flood events are illustrated by the soil stratigraphy:

Stratum K: probably deposited by the flood of 1882,

Stratum M: probably deposited by the flood of 1852.

Four of the lower and one of the upper layers represent cultural episodes:

Stratum I: stable refuse deposition between 1900 and 1929,

Stratum G: garage operation period from 1929 to 1934,

Stratum P: dumping of stove ash and wood scraps, ca. 1940,

Stratum O: importation of loam for a garden, and

Stratum E: deposition of refuse after 1939, which was subsequently spread to level the ground.

Ground modification activities are represented by

Stratum B: first layer of gravel placed at the western end,

Stratum C: gravel layer at the western portion of the area,

Stratum B: gravel added to entire parking lot area,

Stratum A: first asphalt paving of parking lot,

Stratum B: gravel added to hole created by slumpage, and

Stratum A: re-paving of slumpage area.

### 5.3 Trench 3

A short exploratory trench was excavated on the parking lot apron west of the location of the Tourist Hotel, at 16W. The trench extended from 33W to 40W and was excavated to a depth of 1.5 meters. Two series of cultural debitage layers were observed (Plate 22). The first series directly underlies the asphalt and gravel layers. The second series is separated from the upper series by a 40 cm layer of sterile clay. Both layers have a gradual slope towards the river. No artifacts were collected during this excavation, although round nails, brown glass sherds, lumber fragments, ash and bricks were observed in the cultural layers. These layers are interpreted as garbage disposal from the hotel; the upper sequence dating after the demolition of the gazebo-like structure encountered in Trench 1, and the lower sequence being associated with the operation of the Quebec Hotel (up to 1926).

## 6.0 INTERPRETATION

The stratigraphy and the recovered artifacts confirmed the historical documentation of the utilization of the site. Two new facts were retrieved from the impact assessment, as well as augmentation of the known data.

The foremost discovery was the existence of the structure associated with the farmstead depicted on the 1848 Moody map. Due to variations of scale and shifting of natural features which were used as surveying landmarks, by Moody, it was unclear if the farmstead was near the site. Discovery of the planks, indicating the floor of a structure, confirmed the presence of the farmstead and the utility of the Moody map for locating buildings dating to 1850. The function of the excavated structure is unknown, as the feature was not removed. Rather, it was left intact and reburied.

The second discovery relates to the land stability of the site. The stratigraphy of Trench 2 (Figure 7) indicates that a major block slumpage had occurred at some point after 1950, and more probably after 1960. This slumpage caused a downward displacement of the western portion of the site of approximately 80 cm. Earlier slumpages may have occurred and the evidence would be visible in deeper excavations.

Land use information was retrieved. The riverbank area had been used as a garbage disposal area during the period from 1910 to 1930. Garbage disposal over the existing upper bank appears to have continued throughout the occupation of the site. The sloping strata from Trench 3 and Stratum I from Trench 1 indicate that material was often tossed onto the slope of the riverbank.

Cultural data was retrieved in the form of artifacts, which confirmed the identification of the various soil strata. The debris from the Quebec Hotel was significant in that it showed the establishment to be a first-rate hotel. Food remains consisted of oysters, which would have been imported by railroad, and extremely generous cuts of steaks. Comparatively, the occupants of the dwelling adjacent to Trench 2 ate wild game (rabbit), cheaper cuts of meat (hocks, etc.) or much thinner cuts of the same steaks.

#### 7.0 RECOMMENDATIONS

The excavations, conducted to a depth of nearly two meters, recovered evidence of historic occupations. If archaeological evidence of Pre-Contact Native occupations is present at the site, it would be below that depth. Therefore, it is recommended that land modification of the parking lot area, which extends deeper than two meters, be monitored by an archaeologist.

Secondly, it is recommended that no land modification occur, adjacent to the sidewalk, in the vicinity of Trench 1, to a depth of greater than one meter. Such an avoidance policy will preserve the archaeological integrity of the remains of the 1848 farmstead.

The riverbank area, which has been a historic dumping area resulting in a recent layer to a depth of 60 cm, requires no archaeological protection. Similarly, the slope shows evidence of multiple phases of dumping, most of them quite recent. It, too, requires no archaeological protection, except for portions near the parking lot, where modifications would be deeper than two meters.

8.0 REFERENCES CITED

Chopping, George Clifford

1978 Bottles of the Canadian Prairies. George C. Chopping,  
Spy Hill, Saskatchewan.

McLeod, K. David

1988 Riverbank Enhancement/Core Area Initiative: Summary of  
the Potential Heritage Resources at the Tourist Hotel  
Site. Manuscript on file with Historic Resources  
Branch, Manitoba Department of Culture, Heritage and  
Recreation.

Toulouse, Julian Harrison

1971 Bottle Makers. Thomas Nelson Inc., New York.

Warkentin, John & Richard I. Ruggles

1970 Historical Atlas of Manitoba: 1612 - 1969. Manitoba  
Historical Society, Winnipeg.

APPENDIX A  
LIST OF RECOVERED ARTIFACTS

NON-FAUNAL ARTIFACTS

Bar Stock	1	Lock	4
Bark, Birch	9	Locket	1
Board	4	Mat	1
Bolt	3	Mortar	2
Bottle (complete)	7	Nail, Round	167
Brick	3	" , Square	159
Bridle	1	Nail Puller	1
Bung, Barrel	1	Nut	3
Button	4	Pail	1
Calipers	1	Peg	1
Can Opener	1	Pen	1
Cap, Bottle	15	Pencil	1
Chisel	1	Pie Plate	1
Clevis Pin	1	Pipe, Kaolin	11
Clinker	2	Ribbon	3
Cloth	6	Rod	1
Clothes Peg	6	Rubber Ring	1
Coal	4	Scrap, Leather	40
Coat	1	" , Iron	17
Coconut	4	Screen	1
Comb	1	Screw	1
Concrete	3	Seal, Bottle	1
Concretion	3	Seed	2
Conduit	6	Sherd, Glass	709
Cork	20	" , Porcelain	372
Denture	1	" , Stoneware	30
Egg Beater	1	Shingle	3
Electric Light Socket	1	Shoe	28
Foil	8	Slag	28
Fragment, Bakelite	1	Spectacles ?	1
" , Iron	53	Spoon	1
" , Plastic	3	Staple	1
" , Rubber	17	Stopper, Bottle	8
" , Wood	9	Strap, Iron	15
Gasket	1	Thong	1
Hair, Horse	1	Tile, Bathroom	1
Handle, Broom	3	" , Sewer	5
" , Drawer	1	" , Weeping	14
" , Pail	1	Tin Can (complete)	3
Harness	1	Toy	2
Hinge	1	Tube	3
Hook	1	Tumbler (complete)	1
Horseshoe	2	Unidentified	5
Insulator	5	Wagon (components)	3
Knife	3	Wick Adjuster	1
Lamp	1	Window Frame	1
Leaf Spring	1	Windowpane	187
Licence Plate	1	Wire	40
Lid	4	Wire, Electrical	6
Linkage	1	Wrench	1
Linoleum	9		

FAUNAL REMAINS

Shellfish (72)			
Valve	Oyster		72
Fish (3)			
Cleithrum	Species Unidentified		1
Otolith	Drum		1
Vertebra	Species Unidentified		1
Bird (6)			
Carpometacarpus	Chicken ?		1
Femur	Chicken ?		1
Humerus	Chicken ?		1
Innominate	Chicken ?		1
Tibiotarsus	Chicken ?		1
Ulna	Chicken ?		1
Mammal, small (2)			
Mandible, Incisor	Rabbit		1
Radius	Rabbit		1
Mammal, medium (24)			
Calcaneus	Pig ?		1
Femur	Pig ?		2
Humerus	Pig ?		2
Mandible	Pig ?		1
Metapodial	Pig ?		1
Phalanx	Pig ?		2
Scapula	Pig ?		2
Tibia	Pig ?		1
Metapodial	Sheep		1
Phalanx	Sheep		1
Rib	Species Unidentifiable		9
Vertebra	Species Unidentifiable		1
Mammal, large (64)			
Femur	Cow ?		8
Humerus	Cow ?		5
Innominate	Cow ?		5
Radius	Cow ?		5
Rib	Cow ?		16
Scapula	Cow ?		2
Sternabra	Cow ?		1
Tibia	Cow ?		6
Vertebra	Cow ?		10
Long Bone	Species Unidentifiable		6
Mammal, size class indeterminate (11)			
Rib	?		1
Undetermined	?		10
Total faunal specimens			182



APPENDIX B  
PHOTOGRAPHIC PLATES

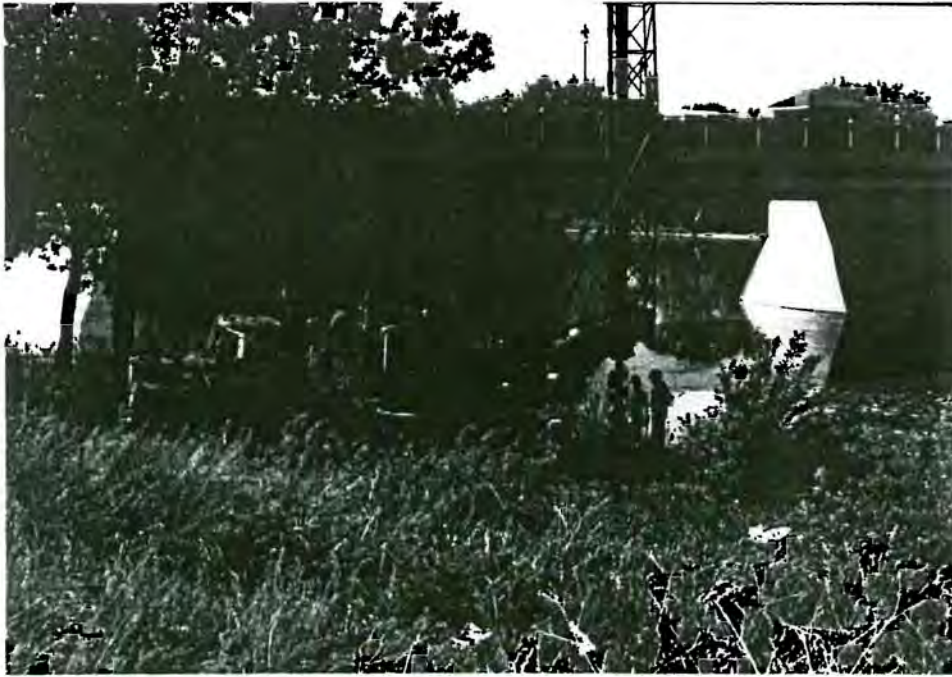


Plate 1: Soil testing drill at base of slope.



Plate 2: Power auger investigations in riverbank area.



Plate 3: Backhoe dumping a bucket of excavated soil.



Plate 4: Examining excavated material from Trench 1.



Plate 5: Looking east along Trench 1.



Plate 6: Looking west along Trench 1.

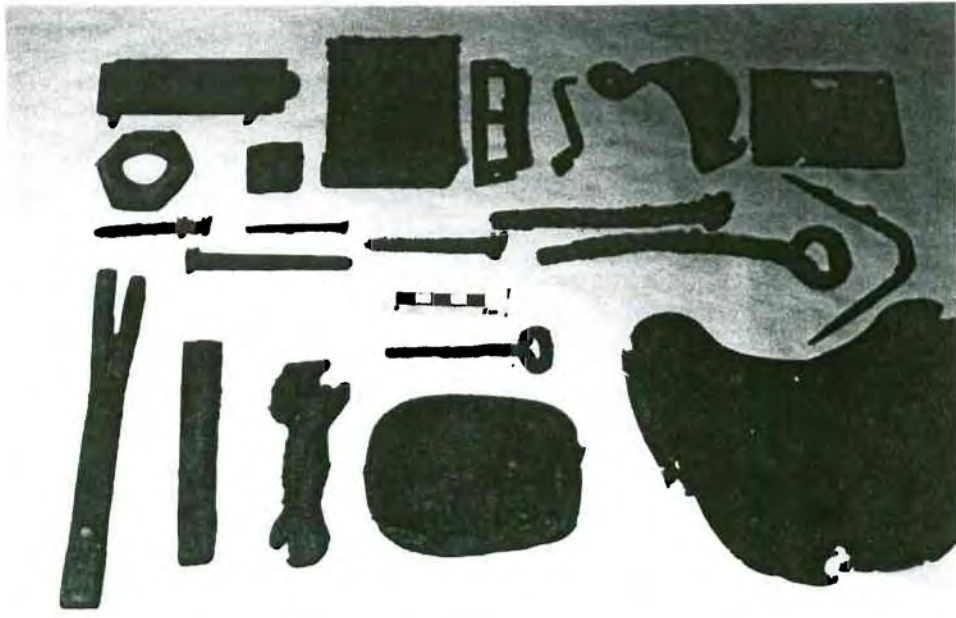


Plate 7: Metallic objects recovered from D1Lg-56.

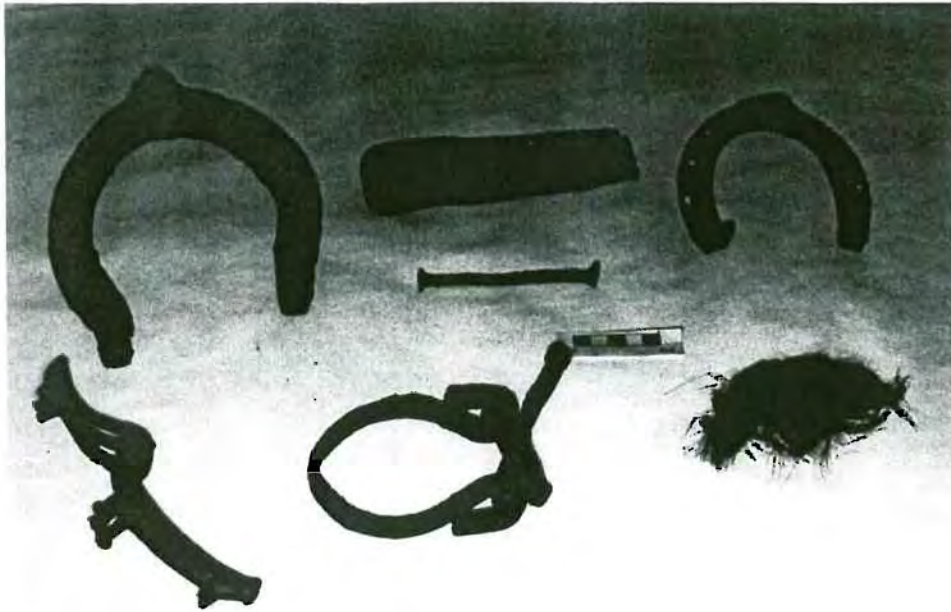


Plate 8: Artifacts relating to horse-drawn transportation.



Plate 9: Household artifacts.

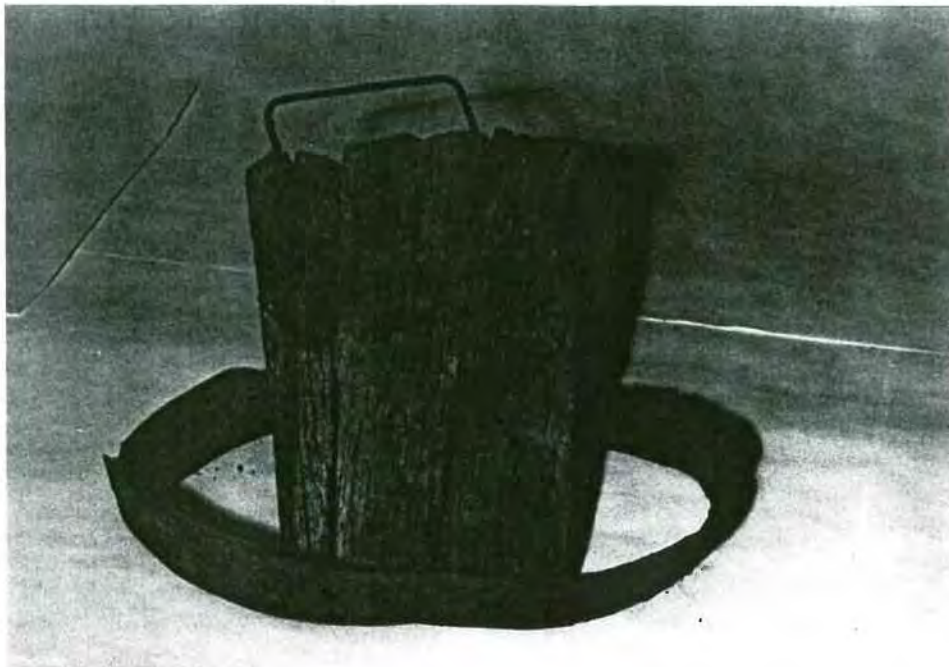


Plate 10: Remnants of a wooden pail (Trench 2).



Plate 11: Shoes recovered from Trench 1, Level 2.

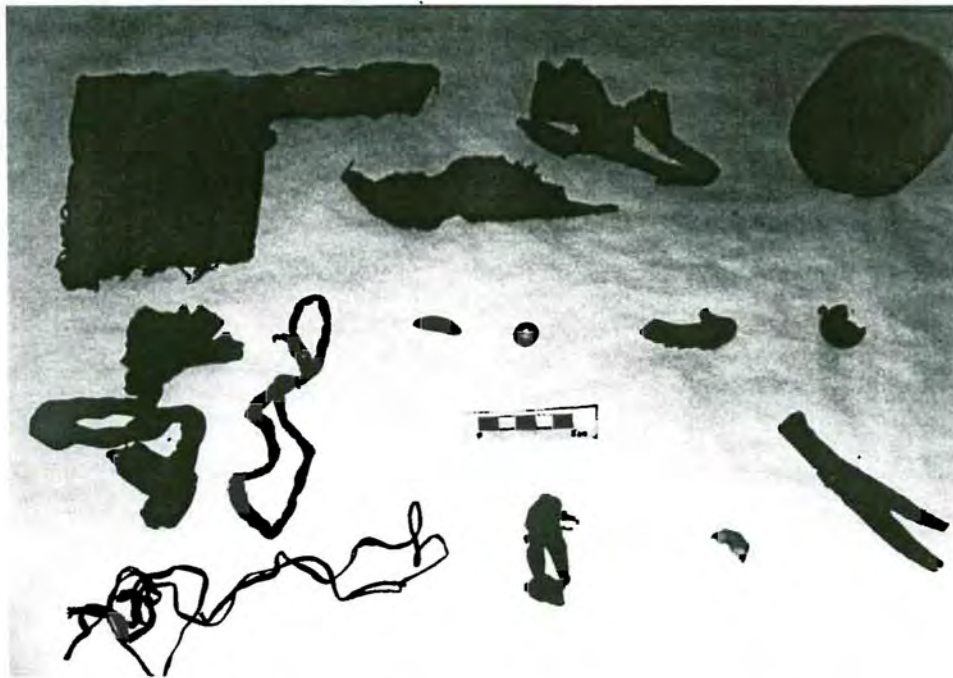


Plate 12: Personal articles recovered during excavations.



Plate 13: Kaolin (white clay) tobacco pipes.



Plate 14: Ceramic sherds of dinnerware vessels.



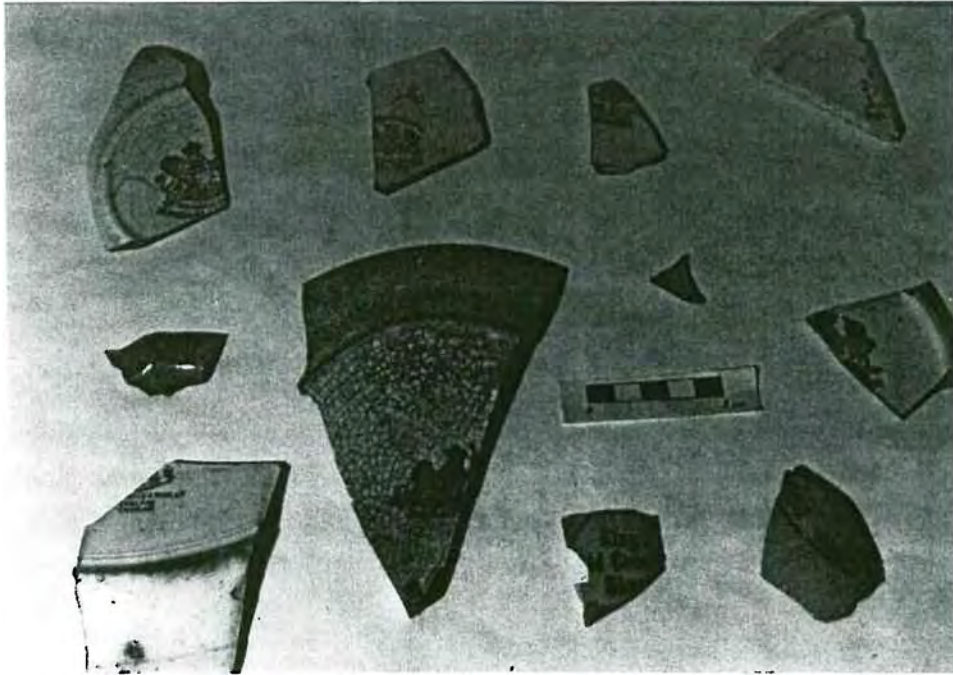


Plate 15: Ceramic sherds with maker's marks.



Plate 16: Complete bottles recovered during excavations.



Plate 17: Various glass sherds from the site.



Plate 18: Miscellaneous glass artifacts.



Plate 19: Food remains located during excavations.

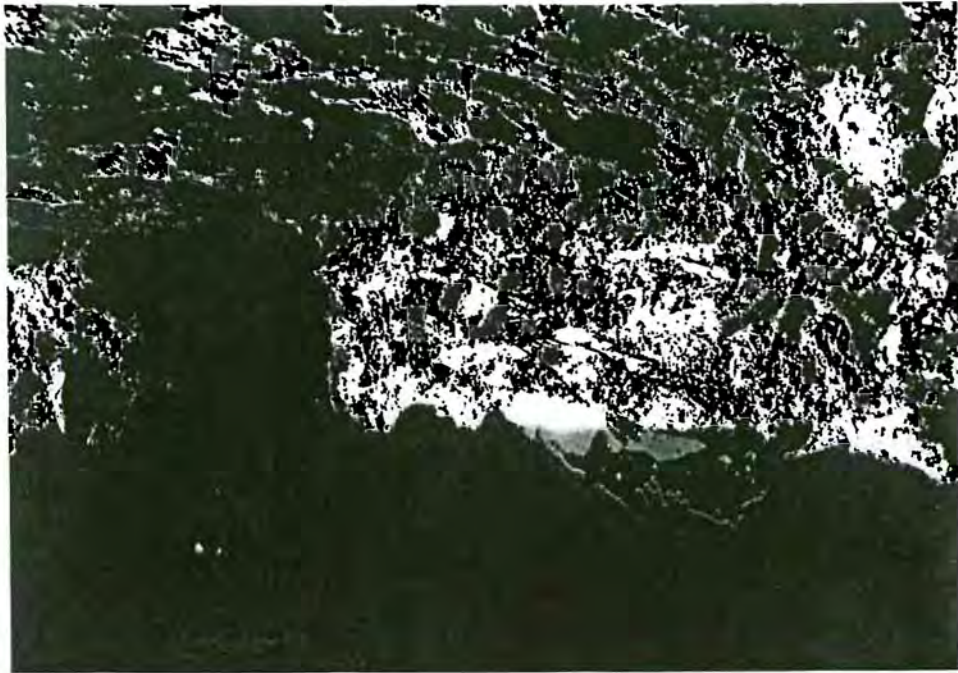


Plate 20: Planks at base of Trench 1 (0-5W, 170 cm depth).



Plate 21: Detail of Trench 1 (Stratum G, I).



Plate 22: Profile of Trench 3.

APPENDIX C

RELEVANT PERMITS



**Heritage Permit No.** A24-88

FORM 11

PURSUANT to Section/Subsection 53 of *The Heritage Resources Act*:

Name: Quaternary Consultants Ltd  
Address: 733 Jessie Avenue  
Winnipeg, Manitoba  
R3M 0Z6

(hereinafter referred to as "the Permittee"),

is hereby granted permission to:

carry out a heritage resource impact assessment of the Tourist Hotel Site, located on parts of River Lots 706 and 805, Parish of St. Boniface, in the City of Winnipeg, commonly known as 119 Provencher Avenue.

during the period:

27 May to 31 July 1988

This permit is issued subject to the following conditions:

- (1) That the information provided in the application for this permit dated the 27th day of May 1988, is true in substance and in fact;
- (2) That the Permittee shall comply with all the provisions of *The Heritage Resources Act* and any regulations or orders thereunder;
- (3) That the Permittee shall provide to the Minister a written report or reports with respect to the Permittee's activities pursuant to this permit, the form and content of which shall be satisfactory to the Minister and which shall be provided on the following dates:  
31 August 1988
- (4) That this permit is not transferable;
- (5) This permit may be revoked by the Minister where, in the opinion of the Minister, there has been a breach of any of the terms or conditions herein or of any provision of *The Heritage Resources Act* or any regulations thereunder;

(6) Special Conditions:

That neither the Government of Manitoba nor the party issuing this permit be liable for any damages resulting from any activities carried out pursuant to this permit, and the Permittee specifically agrees, in consideration for receiving this permit, to indemnify and hold harmless the Minister and the Government of Manitoba, the Minister and any employees and officials of the Government, against any and all actions, liens, demands, loss, liability, cost, damage and expense including, without limitation, reasonable legal fees, which the Government, Minister or any employee or official of the Government may suffer or incur by reason of any of the activities to or related to this permit.

Dated at the City of Winnipeg, in Manitoba, this 27th day of May 1988.

  
Minister of Culture, Heritage and Recreation

**CITY OF WINNIPEG  
OPERATIONS DIVISION  
SERVICES PERMIT**

7760 \$10.00

Tract 5

**TACHE AVE.**

Street/Avenue No. 665

Legal Description: Lot \_\_\_\_\_ Block \_\_\_\_\_ Plan \_\_\_\_\_

MTRC

11:01 AM  
15/19/88

**TRENCHING & SOIL TESTING FOR  
ARCHAEOLOGICAL TESTING**

- |   |  |
|---|--|
| <input type="checkbox"/> Single family residence  | <input type="checkbox"/> Industrial          |
| <input type="checkbox"/> Two family semi-detached | <input type="checkbox"/> Demolition/removal  |
| <input type="checkbox"/> Multiple family          | <input type="checkbox"/> Addition/alteration |
| <input type="checkbox"/> Commercial               | <input type="checkbox"/> Other               |

**NOTE**  
CONTRACTOR RESPONSIBLE  
FOR CLEAN-UP OF  
ALL MUD LEFT ON STREETS  
DURING CONSTRUCTION

Applicant Quaternary Consultants Ltd.  
Address 773 Jessie Ave.  
Phone 453-3642

- Contractor  
 Other

**WATER SERVICE**

Type of Service	Size and Type	Account No.	Fee
Domestic—Single Meter	_____	_____	\$ _____
Domestic—Multiple Meter (standard Drawing) (application to be signed by owner)	_____	_____	\$ _____
Domestic—Single meter multiple users	_____	_____	\$ _____
Separate sprinkler service (fire)*	_____	_____	\$ _____
Combined domestic and fire service, industrial, etc. (drawings)*	_____	_____	\$ _____
Booster pump installation (drawings)*	_____	_____	\$ _____
Hydrant rental (per unit per month)*	_____	_____	\$ _____

EXISTING APPROACHES  
TO BE USED FOR  
ACCESS TO PROPERTY

\*A set of drawings showing interconnections, cross-connections, back-flow devices, etc., must accompany application.

**SEWER SERVICE**

Type of Service	Size and Type	Account No.	Fee
Waste Water Sewer	_____	_____	\$ _____
Land Drainage Sewer	_____	_____	\$ _____
Combined Sewer	_____	_____	\$ _____
Holiday & Weekend inspection	<b>INSPECTION ONLY</b>	_____	\$ <b>10.00</b>
			<b>TOTAL FEE \$ 10.00</b>

A set of drawings must accompany application

**Re: Indemnity Clause for Service Application and Services Permit**

I undertake to observe and perform the provisions of all Dominion or Provincial statutes or regulations, and the applicable by-law or by-laws, schemes and regulations or orders and plans continued in force pursuant to Part IX of The City of Winnipeg Act affecting said land; and all specifications or instructions issued by the duly authorized officers of the City in respect of the work incidental to the subject matter of this application and to indemnify the City against all losses, costs, charges or damages caused by or arising out of anything done pursuant to any permit issued under this application.

Applicant agrees to comply with all By-laws, requirements and Special Conditions set out herein:

Installer *[Signature]* DATE \_\_\_\_\_  
Designated Officer *[Signature]* DATE 1988-05-19

**CUSTOMER COPY**



APPENDIX D

ARTIFACT CATALOG RECORD

DILg-56

1988 Artifact Recoveries

Tourist Hotel Site

Catalog No.	Artifact	Artifact Type	QTY	Color	Material	General Location	Provenience				Depth Collection	
							Unit/	Grid	Refer.	Lv.	Max.	
1	Sherd	Bottle	1	Brown	Glass	Riverbank	10	N	60	W	50	Auger
2	Sherd	Bottle	1	Green	Glass	Riverbank	10	N	60	W	50	Auger
3	Fragment	Tin Can	4		Iron	Riverbank	10	N	60	W	50	Auger
4	Burr ?		1		Iron	Riverbank	10	N	60	W	50	Auger
5	Fragment		1	Brown/Grey	Rubber	Riverbank	10	N	60	W	50	Auger
6	Sherd	Bottle	6	Brown	Glass	Slope	15	N	50	W	20	Auger
7	Sherd	Bottle	4	Clear	Glass	Slope	15	N	50	W	20	Auger
8	Windowpane		1	Clear	Glass	Slope	15	N	50	W	20	Auger
9	Brick		1	Grey	Cement	Slope	15	N	50	W	20	Auger
10	Sherd		1	Black/Whit	Stoneware	Riverbank	17	N	70	W	10	Auger
11	Sherd	Bottle	1	Clear	Glass	Riverbank	17	N	70	W	25	Auger
12	Sherd	Bottle	1	Aqua	Glass	Riverbank	17	N	70	W	30	Auger
13	Sherd	Bottle	1	Olive	Glass	Riverbank	17	N	70	W	30	Auger
14	Fragment	Bag	1	Green	Plastic	Riverbank	17	N	70	W	55	Auger
15	Windowpane		1	Clear	Glass	Riverbank	25	N	70	W	35	Auger
16	Otolith		1	White	Bone	Riverbank	20	N	59	W	5	Auger
17	Nail	Round	1		Iron	Riverbank	20	N	59	W	20	Auger
18	Sherd	Bottle	1	Green	Glass	Riverbank	20	N	59	W	20	Auger
19	Sherd	Bottle	1	Clear	Glass	Riverbank	20	N	59	W	40	Auger
20	Sherd	Bottle	1	Green	Glass	Riverbank	20	N	59	W	55	Auger
21	Nail	Round	1		Iron	Slope	25	N	50	W	20	Auger
22	Wire		1		Iron	Slope	25	N	50	W	20	Auger
23	Sherd	Bottle	1	Brown	Glass	Slope	25	N	50	W	20	Auger
24	Cap	Bottle	1	Blue/Silve	Iron	Slope	25	N	50	W	20	Auger
25	Cap, Sherd	Bottle	2	Brown	Iron,Glass	Riverbank	30	N	60	W	20	Auger
26	Sherd	Bottle	1	Clear	Glass	Riverbank	30	N	60	W	20	Auger
27	Pen	Ballpoint	1	Blue	Plastic	Riverbank	30	N	60	W	30	Auger
28	Sherd	Cup	1	White	Porcelain	Riverbank	36	N	70	W	60	Auger
29	Sherd	Bowl?	1	White	Porcelain	Riverbank	36	N	70	W	60	Auger
30	Sherd	Cup?	1	White	Porcelain	Riverbank	36	N	70	W	60	Auger
31	Sherd	Bottle	4	Clear	Glass	Riverbank	36	N	70	W	60	Auger
32	Sherd	Bottle	2	Aqua	Glass	Riverbank	36	N	70	W	60	Auger
33	Sherd	Bottle	1	Olive	Glass	Riverbank	36	N	70	W	60	Auger

DILg-56

1988 Artifact Recoveries

Tourist Hotel Site

Catalog No.	Artifact	Artifact Type	QTY	Color	Material	General Location	Provenience Unit/Grid Refer.			Depth Lv.	Collection Max.	
34	Sherd	Bottle	1	Brown	Glass	Riverbank	36	N	70	W	60	Auger
35	Sherd	Bottle ?	1	Clear	Glass	Riverbank	36	N	70	W	60	Auger
36	Sherd	?	1	Clear	Glass	Riverbank	36	N	70	W	70	Auger
37	Bottle	Ink	1	Clear	Glass	Riverbank	36	N	70	W	60	Auger
38	Windowpane		7	Clear	Glass	Riverbank	36	N	70	W	60	Auger
39	Rib ?	Mammal	1		Bone	Riverbank	36	N	70	W	60	Auger
40	Fragment		3	Black	Rubber	Riverbank	36	N	70	W	60	Auger
41	Scrap		1		Iron	Riverbank	36	N	70	W	60	Auger
42	Nail	Square	6		Iron	Riverbank	36	N	70	W	70	Auger
43	Lid	Tin can	1		Iron	Riverbank	36	N	70	W	80	Auger
44	Fragment	?	1	Black	Rubber	Riverbank	38	N	60	W	30	Auger
45	Sherd	Cup	1	White	Porcelain	Riverbank	38	N	60	W	80	Auger
46	Shingle	Asphalt	1	Green	Asphalt	Riverbank	55	N	70	W	20	Auger
47	Sherd	Tumbler	1	Clear	Glass	Riverbank	55	N	70	W	65	Auger
48	Sherd	Bottle	1	Clear	Glass	Riverbank	55	N	70	W	55	Auger
49	Sherd	Bottle	1	Clear	Glass	Riverbank	55	N	70	W	55	Auger
50	Foil	Package	1	Silver	Aluminum	Slope	57.5	N	50	W	20	Auger
51	Fragment	Bag	1	Clear	Plastic	Slope	57.5	N	50	W	20	Auger
52	Sherd	Bottle	6	Clear	Glass	Slope	57.5	N	50	W	40	Auger
53	Sherd	Ash tray	1	Clear	Glass	Slope	57.5	N	50	W	40	Auger
54	Sherd	Bottle	1	Brown	Glass	Slope	57.5	N	50	W	50	Auger
55	Windowpane		1	Aqua	Glass	Slope	57.5	N	50	W	40	Auger
56	Strap		1		Iron	Slope	57.5	N	50	W	40	Auger
57	Cap	Bottle	4		Iron	Slope	57.5	N	50	W	50	Auger
58	Fragment	?	1	Black	Bakelite	Slope	57.5	N	50	W	40	Auger
59	Tin can	Tin can	1		Aluminum	Slope	45	N	50	W	20	Auger
60	Sherd		1	White	Porcelain	Slope	45	N	50	W	20	Auger
61	Tile	Bathroom	1	White	Porcelain	Slope	45	N	50	W	20	Auger
62	Fragment	?	1	Brown	Leather	Riverbank	50	N	60	W	60	Auger
63	Sherd	Tumbler ?	1	Clear	Glass	Riverbank	50	N	60	W	60	Auger
64	Seed	Plum	1		Seed	Riverbank	50	N	70	W	20	Auger
65	Shingle	Asphalt	1	?	Asphalt	Riverbank	50	N	70	W	20	Auger
66	Mortar		1		Cement	Riverbank	50	N	70	W	20	Auger

DILg-56

1988 Artifact Recoveries

Tourist Hotel Site

Catalog No.	Artifact	Artifact Type	QTY	Color	Material	General Location	Provenience			Depth	Collection
							Unit/Grid	Refer.	Lv.	Max.	
67	Concrete		1		Cement	Riverbank	50	N 70	W	40	Auger
68	Mortar		1		Cement	Riverbank	50	N 70	W	80	Auger
69	Clinker		1		Lithic	Riverbank	50	N 70	W	80	Auger
70	Sherd	Bottle	1	Brown	Glass	Riverbank	50	N 70	W	80	Auger
71	Sherd	Bottle	1	Aqua	Glass	Riverbank	50	N 70	W	80	Auger
72	Sherd	Bowl ?	1	White	Porcelain	Riverbank	50	N 70	W	80	Auger
73	Scrap		1		Iron	Riverbank	50	N 70	W	80	Auger
74	Unidentified		1		Iron	Riverbank	50	N 70	W	80	Auger
75	Sherd	Bottle	1	Olive	Glass	Riverbank	45	N 70	W	60	Auger
76	Sherd	Bottle	2	Clear	Glass	Riverbank	45	N 70	W	60	Auger
77	Windowpane		1	Clear	Glass	Riverbank	45	N 70	W	60	Auger
78	Cap	Bottle	1		Iron	Riverbank	45	N 70	W	60	Auger
79	Nail	Square	4		Iron	Riverbank	45	N 70	W	60	Auger
80	Handle	Pail/Can	1		Iron	Riverbank	45	N 70	W	60	Auger
81	Innominate	Bovidae	1		Bone	Riverbank	45	N 70	W	60	Auger
82	Fragment	Lumber	1		Wood	Riverbank	45	N 70	W	60	Auger
83	Clinker		1		Lithic	Riverbank	45	N 70	W	60	Auger
84	Concrete		2		Cement	Riverbank	45	N 70	W	60	Auger
85	Concretion	Rust	3		Iron, Soil	Riverbank	45	N 70	W	60	Auger
86	Comb	Pocket	1	Pink	Plastic	Parking Lot	37	N 35-	40W 1	70	Backhoe
87	Gasket	Automobile	1	Brown	Cork	Parking Lot	37	N 35-	40W 1	70	Backhoe
88	Fragment, Nail	Lumber, Round	1		Wood, Iron	Parking Lot	37	N 35-	40W 1	70	Backhoe
89	Nail	Round	1		Iron	Parking Lot	37	N 35-	40W 1	70	Backhoe
90	Nail	Square	1		Iron	Parking Lot	37	N 35-	40W 1	70	Backhoe
91	Sherd	?	1	White	Porcelain	Parking Lot	37	N 35-	40W 1	70	Backhoe
92	Tube	?	1	White	Porcelain	Parking Lot	37	N 35-	40W 1	70	Backhoe
93	Slag		3	Black	Glass ?	Parking Lot	37	N 35-	40W 1	70	Backhoe
94	Rib	Mammal, Medium	1		Bone	Parking Lot	37	N 35-	40W 1	70	Backhoe
95	Rib	Mammal, Large	1		Bone	Parking Lot	37	N 30-	35W 1	70	Backhoe
96	Slag		2	Black	Glass ?	Parking Lot	37	N 30-	35W 1	70	Backhoe
97	Tile	Sewer	1	Brown	Stoneware	Parking Lot	37	N 30-	35W 1	70	Backhoe
98	Sherd	?	1	Tan	Stoneware	Parking Lot	37	N 30-	35W 1	70	Backhoe
99	Sherd	Cup ?	2	White	Porcelain	Parking Lot	37	N 30-	35W 1	70	Backhoe

DILg-56

1988 Artifact Recoveries

Tourist Hotel Site

Catalog No.	Artifact	Artifact Type	QTY	Color	Material	General Location	Provenience			Depth	Collection		
							Unit/Grid	Refer.	Lv.	Max.			
100	Sherd	?	1	White/Blue	Porcelain	Parking Lot	37	N	30-	35W	1	70	Backhoe
101	Sherd	Bottle	2	Brown	Glass	Parking Lot	37	N	30-	35W	1	70	Backhoe
102	Sherd	Bottle	1	Clear	Glass	Parking Lot	37	N	30-	35W	1	70	Backhoe
103	Windowpane		2	Clear	Glass	Parking Lot	37	N	30-	35W	1	70	Backhoe
104	Windowpane		1	Clear/Whit	Glass	Parking Lot	37	N	30-	35W	1	70	Backhoe
105	Fragment		1	Red	Rubber	Parking Lot	37	N	30-	35W	1	70	Backhoe
106	Nail	Square	1		Iron	Parking Lot	37	N	30-	35W	1	70	Backhoe
107	Nail	Round	1		Iron	Parking Lot	37	N	30-	35W	1	70	Backhoe
108	Wire	Electrical	1	Black	Copper, +	Parking Lot	37	N	30-	35W	1	70	Backhoe
109	Cap	Bottle	1		Iron	Parking Lot	37	N	5-	10W	2	140	Backhoe
110	Nail	Square	1		Iron	Parking Lot	37	N	5-	10W	2	140	Backhoe
111	Sherd	Plate	1	White	Porcelain	Parking Lot	37	N	5-	10W	2	140	Backhoe
112	Tile	Weeping	1	Red	Terracotta	Parking Lot	37	N	5-	10W	2	140	Backhoe
113	Scrap		1		Iron	Parking Lot	37	N	5-	10W	2	140	Backhoe
114	Button	Four-hole	1	White	Glass	Parking Lot	37	N	5-	10W	2	140	Backhoe
115	Bottle	Bottle	1	Brown	Porcelain	Parking Lot	37	N	10-	15W	1	70	Backhoe
116	Sherd	Cup ?	2	White	Porcelain	Parking Lot	37	N	10-	15W	1	70	Backhoe
117	Sherd	?	1	White/Purp	Porcelain	Parking Lot	37	N	10-	15W	1	70	Backhoe
118	Sherd	Bowl ?	6	Brown	Porcelain	Parking Lot	37	N	10-	15W	1	70	Backhoe
119	Sherd	Plate	1	White	Porcelain	Parking Lot	37	N	10-	15W	1	70	Backhoe
120	Sherd	Plate	2	White	Porcelain	Parking Lot	37	N	10-	15W	1	70	Backhoe
121	Sherd	Cup	1	White	Porcelain	Parking Lot	37	N	10-	15W	1	70	Backhoe
122	Sherd	Bowl	15	White	Porcelain	Parking Lot	37	N	10-	15W	1	70	Backhoe
123	Sherd	Bottle	7	Olive	Glass	Parking Lot	37	N	10-	15W	1	70	Backhoe
124	Sherd	Bottle	4	Brown	Glass	Parking Lot	37	N	10-	15W	1	70	Backhoe
125	Sherd	Bottle	3	Aqua	Glass	Parking Lot	37	N	10-	15W	1	70	Backhoe
126	Sherd	Bottle	1	Green, Lt.	Glass	Parking Lot	37	N	10-	15W	1	70	Backhoe
127	Sherd	Bottle	4	Pale green	Glass	Parking Lot	37	N	10-	15W	1	70	Backhoe
128	Sherd	Bottle ?	6	Clear	Glass	Parking Lot	37	N	10-	15W	1	70	Backhoe
129	Stopper	Bottle	1	Pale green	Glass	Parking Lot	37	N	10-	15W	1	70	Backhoe
130	Sherd	?	1	White	Glass	Parking Lot	37	N	10-	15W	1	70	Backhoe
131	Stopper	Bottle	2	Grey	Glass	Parking Lot	37	N	10-	15W	1	70	Backhoe
132	Windowpane		4	Clear, Aqua	Glass	Parking Lot	37	N	10-	15W	1	70	Backhoe

D1Lg-56

1988 Artifact Recoveries

Tourist Hotel Site

Catalog No.	Artifact	Artifact Type	QTY	Color	Material	General Location	Provenience			Depth Collection			
							Unit/Grid	Refer.	Lv.	Max.			
133	Spectacles ?	Lens ?	1	Clear	Glass	Parking Lot	37	N	10-	15W	1	70	Backhoe
134	Nut	Walnut	1		Floral	Parking Lot	37	N	10-	15W	1	70	Backhoe
135	Nut	Hazelnut	1		Floral	Parking Lot	37	N	10-	15W	1	70	Backhoe
136	Coal	Anthracite	2	Black	Coal	Parking Lot	37	N	10-	15W	1	70	Backhoe
137	Button		1	Brown	Wood	Parking Lot	37	N	10-	15W	1	70	Backhoe
138	Nail	Square	2		Iron	Parking Lot	37	N	10-	15W	1	70	Backhoe
139	Nail	Round	1		Iron	Parking Lot	37	N	10-	15W	1	70	Backhoe
140	Bark	Birch	1		Wood	Parking Lot	37	N	10-	15W	1	70	Backhoe
141	Fragment	Packing Case	1		Wood	Parking Lot	37	N	10-	15W	1	70	Backhoe
142	Bung	Barrel	1		Wood	Parking Lot	37	N	10-	15W	1	70	Backhoe
143	Fragment		1		Wood	Parking Lot	37	N	10-	15W	1	70	Backhoe
144	Fragment	Wicker	1	Brown	Wood	Parking Lot	37	N	10-	15W	1	70	Backhoe
145	Ribbon ?		1	Beige	Cotton ?	Parking Lot	37	N	10-	15W	1	70	Backhoe
146	Shoe, sole		4	tan	Paper ?	Parking Lot	37	N	10-	15W	1	70	Backhoe
147	Linoleum		4	Red	Canvas	Parking Lot	37	N	10-	15W	1	70	Backhoe
148	Harness	Horse	1	Black	Leather	Parking Lot	37	N	10-	15W	1	70	Backhoe
149	Pipe	Smoking	2	White	Kaolin	Parking Lot	37	N	10-	15W	1	70	Backhoe
150	Sherd		1	Grey	Stoneware	Parking Lot	37	N	10-	15W	1	70	Backhoe
151	Hook ?	Bolt	1		Iron	Parking Lot	37	N	10-	15W	1	70	Backhoe
152	Denture ?		1		Brass	Parking Lot	37	N	10-	15W	1	70	Backhoe
153	Foil	Tin	1	Purple	Tin	Parking Lot	37	N	10-	15W	1	70	Backhoe
154	Hair	Horse	1	Black	Hair	Parking Lot	37	N	10-	15W	1	70	Backhoe
155	Humerus	Pig	1		Bone	Parking Lot	37	N	10-	15W	1	70	Backhoe
156	Mandible	Pig	1		Bone, Tooth	Parking Lot	37	N	10-	15W			Backhoe
157	Phalanx	Pig	2		Bone	Parking Lot	37	N	10-	15W	1	70	Backhoe
158	Femur ?	Cow ?	1		Bone	Parking Lot	37	N	10-	15W	1	70	Backhoe
159	Tile	Weeping	1	Red	Terracotta	Parking Lot	37	N	10-	15W	1	70	Backhoe
160	Cork	Bottle	14	Brown	Cork	Parking Lot	37	N	10-	15W	1	70	Backhoe
161	Nail	Round	1		Iron	Parking Lot	37	N	5-	10W	1	70	Backhoe
162	Nail	Square	2		Iron	Parking Lot	37	N	5-	10W	1	70	Backhoe
163	Tile	Weeping	1	Red	Terracotta	Parking Lot	37	N	5-	10W	1	70	Backhoe
164	Sherd	Plate	3	White	Porcelain	Parking Lot	37	N	5-	10W	1	70	Backhoe
165	Sherd	Saucer ?	1	White	Porcelain	Parking Lot	37	N	5-	10W	1	70	Backhoe

DILg-56

1988 Artifact Recoveries

Tourist Hotel Site

Catalog No.	Artifact	Artifact Type	QTY	Color	Material	General Location	Provenience			Depth Collection		
							Unit/Grid	Refer.	Lv.	Max.		
166	Sherd	Bowl ?	2	White	Porcelain	Parking Lot	37	N 5-	10W	1	70	Backhoe
167	Sherd	Lamp globe	3	Clear	Glass	Parking Lot	37	N 5-	10W	1	70	Backhoe
168	Windowpane		4	Aqua	Glass	Parking Lot	37	N 5-	10W	1	70	Backhoe
169	Slag		2	Black	Glass ?	Parking Lot	37	N 5-	10W	1	70	Backhoe
170	Sherd	Bottle	1	Olive	Glass ?	Parking Lot	37	N 5-	10W	1	70	Backhoe
171	Sherd	?	1	White/Blue	Porcelain	Parking Lot	37	N 5-	10W	1	70	Backhoe
172	Valve	Oyster ?	1		Shell	Parking Lot	37	N 5-	10W	1	70	Backhoe
173	Rib	Mammal, medium	1		Bone	Parking Lot	37	N 5-	10W	1	70	Backhoe
174	Humerus ?	Mammal, large	2		Bone	Parking Lot	37	N 35-	40W			Backhoe
175	Fragment	?	1	Black	Rubber	Parking Lot	37	N 20-	25W	1	70	Backhoe
176	Sherd		1	White	Glass	Parking Lot	37	N 20-	25W	1	70	Backhoe
177	Sherd	Bottle	1	Dark Green	Glass	Parking Lot	37	N 20-	25W	1	70	Backhoe
178	Sherd	Bottle	6	Brown	Glass	Parking Lot	37	N 20-	25W	1	70	Backhoe
179	Sherd	Bottle	1	Clear	Glass	Parking Lot	37	N 20-	25W	1	70	Backhoe
180	Sherd	Plate ?	1	White	Porcelain	Parking Lot	37	N 20-	25W	1	70	Backhoe
181	Sherd		3	White	Porcelain	Parking Lot	37	N 20-	25W	1	70	Backhoe
182	Insulator	House Wiring	1	White	Porcelain	Parking Lot	37	N 20-	25W	1	70	Backhoe
183	Tile	Weeping	1	Red	Terracotta	Parking Lot	37	N 20-	25W	1	70	Backhoe
184	Windowpane		1	Clear	Glass	Parking Lot	37	N 20-	25W	1	70	Backhoe
185	Cork	Bottle	1		Cork	Parking Lot	37	N 20-	25W	1	70	Backhoe
186	Shingle	Roof	1		Wood	Parking Lot	37	N 20-	25W	1	70	Backhoe
187	Fragment	Packing Case	1		Wood	Parking Lot	37	N 20-	25W	1	70	Backhoe
188	Valve	Oyster	12		Shell	Parking Lot	37	N 20-	25W	1	70	Backhoe
189	Slag		7	Black	Glass ?	Parking Lot	37	N 20-	25W	1	70	Backhoe
190	Nail	Square	10		Iron	Parking Lot	37	N 20-	25W	1	70	Backhoe
191	Nail	Round	12		Iron	Parking Lot	37	N 20-	25W	1	70	Backhoe
192	Wire		1		Iron	Parking Lot	37	N 20-	25W	1	70	Backhoe
193	Scrap	Strapping ?	2		Iron	Parking Lot	37	N 20-	25W	1	70	Backhoe
194	Bolt		1		Iron	Parking Lot	37	N 20-	25W	1	70	Backhoe
195	Wrench	Open-end	1		Iron	Parking Lot	37	N 20-	25W	1	70	Backhoe
196	Conduit	Water Pipe	1		Iron	Parking Lot	37	N 20-	25W	1	70	Backhoe
197	Sherd	?	1	Clear	Glass	Parking Lot	37	N 20-	25W	2	160	Backhoe
198	Sherd	Bottle	2	Brown	Glass	Parking Lot	37	N 20-	25W	2	160	Backhoe

DILg-56

1988 Artifact Recoveries

Tourist Hotel Site

Catalog No.	Artifact	Artifact Type	QTY	Color	Material	General Location	Provenience				Depth	Collection	
							Unit/Grid	Refer.	Lv.	Max.			
199	Sherd	Bottle ?	2	Clear	Glass	Parking Lot	37	N	20-	25W	2	160	Backhoe
200	Sherd	Bottle	1	Green	Glass	Parking Lot	37	N	20-	25W	2	160	Backhoe
201	Windowpane		9	Aqua	Glass	Parking Lot	37	N	20-	25W	2	160	Backhoe
202	Sherd	Saucer	1	White	Porcelain	Parking Lot	37	N	20-	25W	2	160	Backhoe
203	Sherd	Plate	1	White	Porcelain	Parking Lot	37	N	20-	25W	2	160	Backhoe
204	Sherd	Bowl ?	1	White	Porcelain	Parking Lot	37	N	20-	25W	2	160	Backhoe
205	Sherd	Commode ?	6	White	Porcelain	Parking Lot	37	N	20-	25W	2	160	Backhoe
206	Nail	Round	2		Iron	Parking Lot	37	N	20-	25W	2	160	Backhoe
207	Fragment	?	1	Black	Rubber	Parking Lot	37	N	20-	25W	2	160	Backhoe
208	Sherd	Crock ?	1	Dark Brown	Stoneware	Parking Lot	37	N	20-	25W	2	160	Backhoe
209	Tumbler	Tumbler	1	Clear	Glass	Parking Lot	37	N	20-	25W	2	160	Backhoe
210	Sherd	Bottle	1	Aqua	Glass	Riverbank	10-	35N	60-	73W	0	0	Sfc. Coll.
211	Sherd	Bottle	1	Aqua	Glass	Riverbank	10-	35N	60-	73W	0	0	Sfc. Coll.
212	Sherd	Bottle	1	Clear	Glass	Riverbank	10-	35N	60-	73W	0	0	Sfc. Coll.
213	Sherd	Bottle	1	Blue	Glass	Riverbank	10-	35N	60-	73W	0	0	Sfc. Coll.
214	Sherd	Bottle	2	Aqua	Glass	Riverbank	10-	35N	60-	73W	0	0	Sfc. Coll.
215	Sherd	Bottle	1	Lt. Green	Glass	Riverbank	10-	35N	60-	73W	0	0	Sfc. Coll.
216	Sherd	Bottle	1	Aqua	Glass	Riverbank	10-	35N	60-	73W	0	0	Sfc. Coll.
217	Sherd	Bottle	1	Clear	Glass	Riverbank	10-	35N	60-	73W	0	0	Sfc. Coll.
218	Sherd	?	1	Green/Whit	Glass	Riverbank	10-	35N	60-	73W	0	0	Sfc. Coll.
219	Sherd	Bottle	2	Aqua	Glass	Riverbank	10-	35N	60-	73W	0	0	Sfc. Coll.
220	Sherd	Bottle	2	Clear	Glass	Riverbank	10-	35N	60-	73W	0	0	Sfc. Coll.
221	Sherd	Bottle	5	Brown	Glass	Riverbank	10-	35N	60-	73W	0	0	Sfc. Coll.
222	Sherd	Bottle	6	Amethyst	Glass	Riverbank	10-	35N	60-	73W	0	0	Sfc. Coll.
223	Sherd	Bottle	1	Amber	Glass	Riverbank	10-	35N	60-	73W	0	0	Sfc. Coll.
224	Sherd	Bottle	6	Clear	Glass	Riverbank	10-	35N	60-	73W	0	0	Sfc. Coll.
225	Sherd	Bottle	12	Aqua	Glass	Riverbank	10-	35N	60-	73W	0	0	Sfc. Coll.
226	Sherd	Bottle	1	Amethyst	Glass	Riverbank	10-	35N	60-	73W	0	0	Sfc. Coll.
227	Sherd	Bottle	5	Green	Glass	Riverbank	10-	35N	60-	73W	0	0	Sfc. Coll.
228	Sherd	Bottle	1	Aqua	Glass	Riverbank	10-	35N	60-	73W	0	0	Sfc. Coll.
229	Sherd	Bottle	1	Brown	Glass	Riverbank	10-	35N	60-	73W	0	0	Sfc. Coll.
230	Sherd	Tumbler	1	Amethyst	Glass	Riverbank	10-	35N	60-	73W	0	0	Sfc. Coll.
231	Sherd	Bottle	22	White/Brow	Porcelain	Riverbank	10-	35N	60-	73W	0	0	Sfc. Coll.



DILg-56

1988 Artifact Recoveries

Tourist Hotel Site

Catalog No.	Artifact	Artifact Type	QTY	Color	Material	General Location	Provenience				Depth Collection		
							Unit/	Grid	Refer.	Lv.	Max.		
232	Sherd	Plate	2	White	Porcelain	Riverbank	10-	35N	60-	73W	0	0	Sfc. Coll.
233	Sherd	?	1	White	Glass	Riverbank	10-	35N	60-	73W	0	0	Sfc. Coll.
234	Sherd	Crock	3	Grey	Stoneware	Riverbank	10-	35N	60-	73W	0	0	Sfc. Coll.
235	Sherd	Tea Pot ?	1	Black, +	Porcelain	Riverbank	10-	35N	60-	73W	0	0	Sfc. Coll.
236	Sherd	Cup	1	White, +	Porcelain	Riverbank	10-	35N	60-	73W	0	0	Sfc. Coll.
237	Sherd	Plate	2	White, +	Porcelain	Riverbank	10-	35N	60-	73W	0	0	Sfc. Coll.
238	Sherd	Creamer?/Sugar Bowl?	1	White, +	Porcelain	Riverbank	10-	35N	60-	73W	0	0	Sfc. Coll.
239	Sherd	Saucer	1	White, +	Porcelain	Riverbank	10-	35N	60-	73W	0	0	Sfc. Coll.
240	Sherd	Cup	1	White	Porcelain	Riverbank	10-	35N	60-	73W	0	0	Sfc. Coll.
241	Sherd	Plate	1	White	Porcelain	Riverbank	10-	35N	60-	73W	0	0	Sfc. Coll.
242	Sherd	?	4	White	Porcelain	Riverbank	10-	35N	60-	73W	0	0	Sfc. Coll.
243	Electric Light	Socket	1	White	Porcelain	Riverbank	10-	35N	60-	73W	0	0	Sfc. Coll.
244	Sherd	Bottle	1	Brown	Glass	Riverbank	10-	35N	60-	73W	0	0	Sfc. Coll.
245	Sherd	Plate	1	White, Blue	Porcelain	Riverbank	10-	35N	60-	73W	0	0	Sfc. Coll.
246	Sherd	Plate	1	White, +	Porcelain	Riverbank	10-	35N	60-	73W	0	0	Sfc. Coll.
247	Windowpane		3	Aqua	Glass	Riverbank	10-	35N	60-	73W	0	0	Sfc. Coll.
248	Windowpane	Plate	2	Aqua	Glass	Riverbank	10-	35N	60-	73W	0	0	Sfc. Coll.
249	Burr	Bolt	1		Iron	Riverbank	10-	35N	60-	73W	0	0	Sfc. Coll.
250	Tin Can	Tin Can	1	Rust, Blue	Iron, +	Riverbank	10-	35N	60-	73W	0	0	Sfc. Coll.
251	Nail	Square	1		Iron	Riverbank	10-	35N	60-	73W	0	0	Sfc. Coll.
252	Sherd	Bottle	2	Brown	Glass	Parking Lot	37	N	25-	30W	1	70	Backhoe
253	Sherd	Bottle	1	Aqua	Glass	Parking Lot	37	N	25-	30W	1	70	Backhoe
254	Sherd	?	1	White	Glass	Parking Lot	37	N	25-	30W	1	70	Backhoe
255	Sherd	?	1	White	Porcelain	Parking Lot	37	N	25-	30W	1	70	Backhoe
256	Windowpane		1	Clear	Glass	Parking Lot	37	N	25-	30W	1	70	Backhoe
257	Slag		3	Black	Glass ?	Parking Lot	37	N	25-	30W	1	70	Backhoe
258	Nail	Square	2		Iron	Parking Lot	37	N	25-	30W	1	70	Backhoe
259	Nail	Round	3		Iron	Parking Lot	37	N	25-	30W	1	70	Backhoe
260	Fragment	Board	1		Wood	Parking Lot	37	N	25-	30W	1	70	Backhoe
261	Tile	Sewer	1	Tan	Terracotta	Parking Lot	37	N	25-	30W	1	70	Backhoe
262	Tibia	Mammal, large	3		Bone	Parking Lot	37	N	25-	30W	1	70	Backhoe
263	Radius	Mammal, large	2		Bone	Parking Lot	37	N	25-	30W	1	70	Backhoe
264	Mat	Floor	1	Black	Rubber	Parking Lot	37	N	25-	30W	2	120	Backhoe

DILg-56

1988 Artifact Recoveries

Tourist Hotel Site

Catalog No.	Artifact	Artifact Type	QTY	Color	Material	General Location	Provenience				Depth	Collection	
						Unit/Grid	Refer.	Lv.	Max.				
265	Cloth	?	2	Blue	Cotton ?	Parking Lot	37	N	25-	30W	2	120	Backhoe
266	Slag		2	Black	Glass ?	Parking Lot	37	N	25-	30W	2	120	Backhoe
267	Nail	Round	5		Iron	Parking Lot	37	N	25-	30W	2	120	Backhoe
268	Nail	Square	1		Iron	Parking Lot	37	N	25-	30W	2	120	Backhoe
269	Wire	Electrical ?	2		Copper	Parking Lot	37	N	25-	30W	2	120	Backhoe
270	Strap		1		Iron	Parking Lot	37	N	25-	30W	2	120	Backhoe
271	Strap		1		Iron	Parking Lot	37	N	25-	30W	2	120	Backhoe
272	Valve	Oyster	16		Shell	Parking Lot	37	N	25-	30W	2	120	Backhoe
273	Brick		1	Red	Brick	Parking Lot	37	N	25-	30W	2	120	Backhoe
274	Sherd	?	1	White	Porcelain	Parking Lot	37	N	25-	30W	2	120	Backhoe
275	Sherd	?	1	White	Glass	Parking Lot	37	N	25-	30W	2	120	Backhoe
276	Sherd	?	1	Blue	Glass	Parking Lot	37	N	25-	30W	2	120	Backhoe
277	Sherd	Bottle	1	Aqua	Glass	Parking Lot	37	N	25-	30W	2	120	Backhoe
278	Sherd	Bottle	1	Clear	Glass	Parking Lot	37	N	25-	30W	2	120	Backhoe
279	Sherd	Bottle	4	Clear	Glass	Parking Lot	37	N	25-	30W	2	120	Backhoe
280	Windowpane		5	Aqua	Glass	Parking Lot	37	N	25-	30W	2	120	Backhoe
281	Shoe, tongue		1	Black	Leather	Parking Lot	37	N	15-	20W	1	70	Backhoe
282	Button	Four-hole	1	Blue/White	Glass	Parking Lot	37	N	15-	20W	1	70	Backhoe
283	Sherd	Bottle ?	1	White	Glass	Parking Lot	37	N	15-	20W	1	70	Backhoe
284	Sherd	Bottle ?	1	White	Glass	Parking Lot	37	N	15-	20W	1	70	Backhoe
285	Sherd	Bottle	1	Aqua	Glass, Cork	Parking Lot	37	N	15-	20W	1	70	Backhoe
286	Sherd	Bottle	1	Lt. Green	Glass	Parking Lot	37	N	15-	20W	1	70	Backhoe
287	Sherd	Bottle	1	Clear	Glass	Parking Lot	37	N	15-	20W	1	70	Backhoe
288	Sherd	Bottle	5	Clear	Glass	Parking Lot	37	N	15-	20W	1	70	Backhoe
289	Windowpane		20	Aqua	Glass	Parking Lot	37	N	15-	20W	1	70	Backhoe
290	Sherd	Cup	1	White	Porcelain	Parking Lot	37	N	15-	20W	1	70	Backhoe
291	Sherd	Plate	2	White, +	Porcelain	Parking Lot	37	N	15-	20W	1	70	Backhoe
292	Sherd	Plate	1	Blue/White	Porcelain	Parking Lot	37	N	15-	20W	1	70	Backhoe
293	Sherd	Plate	1	White, +	Porcelain	Parking Lot	37	N	15-	20W	1	70	Backhoe
294	Sherd	Plate ?	12	White	Porcelain	Parking Lot	37	N	15-	20W	1	70	Backhoe
295	Sherd	Saucer	1	White, +	Porcelain	Parking Lot	37	N	15-	20W	1	70	Backhoe
296	Cleithrum	Fish	1		Bone	Parking Lot	37	N	15-	20W	1	70	Backhoe
297	Femur ?	Mammal, large	2		Bone	Parking Lot	37	N	15-	20W	1	70	Backhoe

06/20/83

TOURIST HOTEL HERITAGE RESOURCE IMPACT ASSESSMENT

DIlg-56

1988 Artifact Recoveries

Tourist Hotel Site

Catalog No.	Artifact	Artifact Type	QTY	Color	Material	General Location	Provenience				Depth	Collection	
							Unit/Grid	Refer.	Lv.	Max.			
298	Rib ?	Mammal, large	2		Bone	Parking Lot	37	N	15-	20W	1	70	Backhoe
299	Vertebra	Mammal, large	1		Bone	Parking Lot	37	N	15-	20W	1	70	Backhoe
300	Sternabra	Mammal, large	1		Bone	Parking Lot	37	N	15-	20W	1	70	Backhoe
			627										

RECORDS SELECTED 300

DILg-56

1988 Artifact Recoveries

Tourist Hotel Site

Catalog No.	Artifact	Artifact Type	QTY	Color	Material	General Location	Provenience			Depth	Collection
							Unit/Grid	Refer.	Lv.	Max.	
301	Femur	Mammal, large	2		Bone	Parking Lot	37	N 15-	20W 1	70	Backhoe
302	Clothing	?	1	Black	Cotton ?	Parking Lot	37	N 15-	20W 1	70	Backhoe
303	Cork	Bottle	1	Brown	Cork	Parking Lot	37	N 15-	20W 1	70	Backhoe
304	Sherd, Cork	Bottle	1	Aqua, Brown	Glass, Cork	Parking Lot	37	N 15-	20W 1	70	Backhoe
305	Sherd	Bottle	8	Olive	Glass	Parking Lot	37	N 15-	20W 1	70	Backhoe
306	Sherd	Bottle	1	Olive	Glass	Parking Lot	37	N 15-	20W 1	70	Backhoe
307	Sherd	Bottle	1	Green	Glass	Parking Lot	37	N 15-	20W 1	70	Backhoe
308	Sherd	Bottle	1	Green	Glass	Parking Lot	37	N 15-	20W 1	70	Backhoe
309	Sherd	Bottle	2	Brown	Glass	Parking Lot	37	N 15-	20W 1	70	Backhoe
310	Sherd	Bottle	1	Blue-Green	Glass	Parking Lot	37	N 15-	20W 1	70	Backhoe
311	Sherd	Bottle	1	Aqua	Glass	Parking Lot	37	N 15-	20W 1	70	Backhoe
312	Sherd	Bottle	12	Aqua	Glass	Parking Lot	37	N 15-	20W 1	70	Backhoe
313	Slag		3	Black	Glass ?	Parking Lot	37	N 15-	20W 1	70	Backhoe
314	Knife	Kitchen ?	1	Brown	Wood, Iron	Parking Lot	37	N 15-	20W 1	70	Backhoe
315	Nail	Round	4		Iron	Parking Lot	37	N 15-	20W 1	70	Backhoe
316	Fragment	Lumber	1		Wood	Parking Lot	37	N 15-	20W 1	70	Backhoe
317	Clothes Peg	Wooden	4	Brown	Wood	Parking Lot	37	N 15-	20W 1	70	Backhoe
318	Shoe	Slipper	1	Black	Leather, +	Parking Lot	37	N 20-	25W 1	70	Backhoe
319	Scrap		1		Iron, Zinc	Parking Lot	37	N 15-	20W 1	70	Backhoe
320	Bark	Birch	2		Bark	Parking Lot	37	N 15-	20W 1	70	Backhoe
321	Fragment	?	1	Black	Rubber	Parking Lot	37	N 15-	20W 1	70	Backhoe
322	Nail	Square	9		Iron	Parking Lot	37	N 15-	20W 1	70	Backhoe
323	Fragment	Tin Can	1		Iron	Parking Lot	37	N 15-	20W 1	70	Backhoe
324	Valve	Oyster	2		Shell	Parking Lot	37	N 15-	20W 1	70	Backhoe
325	Sherd	Bottle ?	1	Clear	Glass	Parking Lot	37	N 15-	20W 1	70	Backhoe
326	Sherd	Bottle	1	Lt. Green	Glass	Parking Lot	37	N 15-	20W 2	160	Backhoe
327	Sherd	Bottle	2	Aqua	Glass	Parking Lot	37	N 15-	20W 2	160	Backhoe
328	Sherd	Bottle	1	Brown	Glass	Parking Lot	37	N 15-	20W 2	160	Backhoe
329	Sherd	Bottle	1	Blue	Glass	Parking Lot	37	N 15-	20W 2	160	Backhoe
330	Sherd	Cup	1	White, +	Porcelain	Parking Lot	37	N 15-	20W 2	160	Backhoe
331	Sherd	Saucer ?	2	White	Porcelain	Parking Lot	37	N 15-	20W 2	160	Backhoe
332	Sherd	?	2	White	Porcelain	Parking Lot	37	N 15-	20W 2	160	Backhoe
333	Coconut	Husk	1	Brown	Wood	Parking Lot	37	N 15-	20W 2	160	Backhoe

DILg-56

1988 Artifact Recoveries

Tourist Hotel Site

Catalog No.	Artifact	Artifact Type	QTY	Color	Material	General Location	Provenience			Depth	Collection
							Unit/Grid	Refer.	Lv.	Max.	
334	Valve	Oyster	1		Shell	Parking Lot	37	N 15-	20W 2	160	Backhoe
335	Humerus	Mammal, large	1		Bone	Parking Lot	37	N 15-	20W 2	160	Backhoe
336	Nail	Square	3		Iron	Parking Lot	37	N 15-	20W 2	160	Backhoe
337	Fragment	Chair ?	1	Brown	Wood	Parking Lot	37	N 15-	20W 2	160	Backhoe
338	Tube	Sewer	1		Iron	Parking Lot	37	N 15-	20W 2	160	Backhoe
339	Strapping	Packing	1		Iron	Parking Lot	37	N 15-	20W 2	160	Backhoe
340	Humerus	Aves, medium	1		Bone	Parking Lot	37	N 15-	20W 2	160	Backhoe
341	Bottle	Bottle	1	Brown	Glass	Parking Lot	37	N 0-	5W 1	70	Backhoe
342	Bottle	Bottle	1	Clear	Glass	Parking Lot	37	N 0-	5W 1	70	Backhoe
343	Windowpane		15	Aqua	Glass	Parking Lot	37	N 0-	5W 1	70	Backhoe
344	Sherd	Bottle	1	Blue	Glass	Parking Lot	37	N 0-	5W 1	70	Backhoe
345	Sherd	Bottle	3	Olive	Glass	Parking Lot	37	N 0-	5W 1	70	Backhoe
346	Sherd	Bottle	4	Brown	Glass	Parking Lot	37	N 0-	5W 1	70	Backhoe
347	Sherd	Bottle	2	Clear	Glass	Parking Lot	37	N 0-	5W 1	70	Backhoe
348	Sherd	Bottle	6	Aqua	Glass	Parking Lot	37	N 0-	5W 1	70	Backhoe
349	Sherd	Bottle	2	Aqua	Glass	Parking Lot	37	N 0-	5W 1	70	Backhoe
350	Sherd	Bottle	1	Aqua	Glass	Parking Lot	37	N 0-	5W 1	70	Backhoe
351	Sherd	Bottle	3	Clear	Glass	Parking Lot	37	N 0-	5W 1	70	Backhoe
352	Sherd	Bottle	1	Clear	Glass	Parking Lot	37	N 0-	5W 1	70	Backhoe
353	Tube	Plumbing ?	1	White	Porcelain	Parking Lot	37	N 0-	5W 1	70	Backhoe
354	Sherd	Plate	1	White	Porcelain	Parking Lot	37	N 0-	5W 1	70	Backhoe
355	Sherd	Cup	2	White	Porcelain	Parking Lot	37	N 0-	5W 1	70	Backhoe
356	Sherd	Cup	2	White	Porcelain	Parking Lot	37	N 0-	5W 1	70	Backhoe
357	Sherd	Saucer ?	4	White	Porcelain	Parking Lot	37	N 0-	5W 1	70	Backhoe
358	Sherd	Bowl ?	1	White	Porcelain	Parking Lot	37	N 0-	5W 1	70	Backhoe
359	Sherd	?	3	White	Porcelain	Parking Lot	37	N 0-	5W 1	70	Backhoe
360	Sherd	Plate ?	2	White, +	Porcelain	Parking Lot	37	N 0-	5W 1	70	Backhoe
361	Sherd	?	1	White, +	Porcelain	Parking Lot	37	N 0-	5W 1	70	Backhoe
362	Sherd	Bowl ?	22	White, +	Porcelain	Parking Lot	37	N 0-	5W 1	70	Backhoe
363	Sherd	Flowerpot ?	1	Red	Terracotta	Parking Lot	37	N 0-	5W 1	70	Backhoe
364	Tile	Weeping	1	Red	Terracotta	Parking Lot	37	N 0-	5W 1	70	Backhoe
365	Insulator	House Wiring	1	White	Stoneware	Parking Lot	37	N 0-	5W 1	70	Backhoe
366	Tile	Sewer	2	Brown	Terracotta	Parking Lot	37	N 0-	5W 1	70	Backhoe

D1Lg-56

1988 Artifact Recoveries

Tourist Hotel Site

Catalog No.	Artifact	Artifact Type	QTY	Color	Material	General Location	Provenience Unit/Grid	Refer.	Depth Lv.	Collection Max.	
367	Strap		1		Iron	Parking Lot	37	N 0-	5W 1	70	Backhoe
368	Scrap		2		Iron	Parking Lot	37	N 0-	5W 1	70	Backhoe
369	Nail	Square	8		Iron	Parking Lot	37	N 0-	5W 1	70	Backhoe
370	Nail	Round	6		Iron	Parking Lot	37	N 0-	5W 1	70	Backhoe
371	Wire		1		Iron	Parking Lot	37	N 0-	5W 1	70	Backhoe
372	Fragment	?	2	Black	Rubber	Parking Lot	37	N 0-	5W 1	70	Backhoe
373	Fragment	Inner Tube ?	1	Black	Rubber	Parking Lot	37	N 0-	5W 1	70	Backhoe
374	Linoleum		2	Red	Canvas	Parking Lot	37	N 0-	5W 1	70	Backhoe
375	Vertebra	Mammal, large	2		Bone	Parking Lot	37	N 0-	5W 1	70	Backhoe
376	Pie Plate	Granite Ware	1		Iron	Parking Lot	37	N 0-	5W 1	70	Backhoe
377	Lid	Pail	1		Iron	Parking Lot	37	N 20-	25W 2	160	Backhoe
378	Valve	Oyster	23		Shell	Parking Lot	37	N 20-	25W 2	160	Backhoe
379	Rib	Mammal, large	2		Bone	Parking Lot	37	N 20-	25W 2	160	Backhoe
380	Innominate	Mammal, large	2		Bone	Parking Lot	37	N 20-	25W 2	160	Backhoe
381	Tibia	Cow	1		Bone	Parking Lot	37	N 20-	25W 2	160	Backhoe
382	Metapodial	Sheep ?	1		Bone	Parking Lot	37	N 20-	25W 2	160	Backhoe
383	Phalanx	Sheep ?	1		Bone	Parking Lot	37	N 20-	25W 2	160	Backhoe
384	Handle	Broom ?	1	Grey	Wood	Parking Lot	37	N 30-	35W 1	70	Backhoe
385	Wire		1		Iron	Parking Lot	37	N 30-	35W 1	70	Backhoe
386	Strap		1		Iron	Parking Lot	37	N 30-	35W 1	70	Backhoe
387	Conduit	Water Pipe	1		Iron	Parking Lot	37	N 30-	35W 1	70	Backhoe
388	Window Frame	Automotive	1	Black	Rubber, Iro	Parking Lot	37	N 30-	35W 1	70	Backhoe
389	Sherd	Plate	4	White	Porcelain	Parking Lot	37	N 0-	5W 2	170	Backhoe
390	Sherd	Bottle ?	1	White	Porcelain	Parking Lot	37	N 0-	5W 2	170	Backhoe
391	Sherd	Plate	2	White	Porcelain	Parking Lot	37	N 0-	5W 2	170	Backhoe
392	Sherd	Plate	7	White	Porcelain	Parking Lot	37	N 0-	5W 2	170	Backhoe
393	Sherd	Plate	8	White	Porcelain	Parking Lot	37	N 0-	5W 2	170	Backhoe
394	Sherd	Plate	1	White	Porcelain	Parking Lot	37	N 0-	5W 2	170	Backhoe
395	Sherd	Plate	1	White	Porcelain	Parking Lot	37	N 0-	5W 2	170	Backhoe
396	Sherd	Cup	1	White	Porcelain	Parking Lot	37	N 0-	5W 2	170	Backhoe
397	Sherd	Bowl	1	White	Porcelain	Parking Lot	37	N 0-	5W 2	170	Backhoe
398	Sherd	?	11	White	Porcelain	Parking Lot	37	N 0-	5W 2	170	Backhoe
399	Sherd	?	1	White	Plastic	Parking Lot	37	N 0-	5W 2	170	Backhoe

DILg-56

1988 Artifact Recoveries

Tourist Hotel Site

Catalog No.	Artifact	Artifact Type	QTY	Color	Material	General Location	Provenience Unit/Grid	Refer.	Lv.	Depth Max.	Collection	
400	Sherd	Tumbler	1	Clear	Glass	Parking Lot	37	N	0-	5W 2	170	Backhoe
401	Sherd	Tumbler	2	Clear	Glass	Parking Lot	37	N	0-	5W 2	170	Backhoe
402	Sherd	Bottle	3	Aqua	Glass	Parking Lot	37	N	0-	5W 2	170	Backhoe
403	Sherd	Bottle	1	Aqua	Glass	Parking Lot	37	N	0-	5W 2	170	Backhoe
404	Sherd	Bottle	1	Aqua	Glass	Parking Lot	37	N	0-	5W 2	170	Backhoe
405	Sherd	Bottle	3	Aqua	Glass	Parking Lot	37	N	0-	5W 2	170	Backhoe
406	Sherd	Bottle	1	Aqua	Glass	Parking Lot	37	N	0-	5W 2	170	Backhoe
407	Sherd	Bottle	1	Aqua	Glass	Parking Lot	37	N	0-	5W 2	170	Backhoe
408	Sherd	Bottle	2	Aqua	Glass	Parking Lot	37	N	0-	5W 2	170	Backhoe
409	Sherd	Bottle	1	Amethyst	Glass	Parking Lot	37	N	0-	5W 2	170	Backhoe
410	Sherd	Bottle	3	Green	Glass	Parking Lot	37	N	0-	5W 2	170	Backhoe
411	Sherd	Bottle	2	Clear	Glass	Parking Lot	37	N	0-	5W 2	170	Backhoe
412	Sherd	Tumbler ?	1	Clear	Glass	Parking Lot	37	N	0-	5W 2	170	Backhoe
413	Sherd	?	1	Clear	Glass	Parking Lot	37	N	0-	5W 2	170	Backhoe
414	Sherd	Vase	7	White, Red	Glass	Parking Lot	37	N	0-	5W 2	170	Backhoe
415	Sherd	Vase	5	White, Yell	Glass	Parking Lot	37	N	0-	5W 2	170	Backhoe
416	Sherd	Bottle	1	Brown	Glass	Parking Lot	37	N	0-	5W 2	170	Backhoe
417	Sherd	Bottle	1	Aqua	Glass	Parking Lot	37	N	0-	5W 2	170	Backhoe
418	Sherd	Bottle	2	Aqua	Glass	Parking Lot	37	N	0-	5W 2	170	Backhoe
419	Sherd	Cup	3	White	Porcelain	Parking Lot	37	N	0-	5W 2	170	Backhoe
420	Sherd	Saucer	1	White, +	Porcelain	Parking Lot	37	N	0-	5W 2	170	Backhoe
421	Sherd	Lamp	1	Clear	Glass	Parking Lot	37	N	0-	5W 2	170	Backhoe
422	Windowpane		30	Aqua	Glass	Parking Lot	37	N	0-	5W 2	170	Backhoe
423	Insulator	House Wiring	1	White	Porcelain	Parking Lot	37	N	0-	5W 2	170	Backhoe
424	Nail	Square	4		Iron	Parking Lot	37	N	0-	5W 2	170	Backhoe
425	Sherd	Pitcher ?	1	Clear	Glass	Parking Lot	37	N	0-	5W 2	170	Backhoe
426	Stopper	Bottle	1	Brown	Cork	Parking Lot	37	N	0-	5W 2	170	Backhoe
427	Foil	Bottle ?	2	Purple	Lead	Parking Lot	37	N	0-	5W 2	170	Backhoe
428	Fragment	Tin Can	2		Iron	Parking Lot	37	N	0-	5W 2	170	Backhoe
429	Scrap		2		Iron	Parking Lot	37	N	0-	5W 2	170	Backhoe
430	Strap		7		Iron	Parking Lot	37	N	0-	5W 2	170	Backhoe
431	Unidentified		1		Iron	Parking Lot	37	N	0-	5W 2	170	Backhoe
432	Board	Lumber	1	Brown	Wood	Parking Lot	37	N	0-	5W 2	170	Backhoe

D1Lg-56

1988 Artifact Recoveries

Tourist Hotel Site

Catalog No.	Artifact	Artifact Type	QTY	Color	Material	General Location	Provenience Unit/Grid	Refer.	Lv.	Depth Max.	Collection
433	Bark	Birch	1	Brown	Bark	Parking Lot	37	N 0-	5W 2	170	Backhoe
434	Mandible, Incisor,	Rabbit	1		Bone, Tooth	Parking Lot	37	N 0-	5W 2	170	Backhoe
435	Radius	Mammal, large	1		Bone	Parking Lot	37	N 0-	5W 2	170	Backhoe
436	Innominate	Mammal, large	1		Bone	Parking Lot	37	N 0-	5W 2	170	Backhoe
437	Vertebra	Mammal, large	1		Bone	Parking Lot	37	N 0-	5W 2	170	Backhoe
438	Scapula	Pig ?	1		Bone	Parking Lot	37	N 0-	5W 2	170	Backhoe
439	Leaf Spring	Automotive	1		Iron	Parking Lot	37	N 0-	5W 2	170	Backhoe
440	Bottle	Bottle	1	Clear	Glass	Parking Lot	37	N 0-	5W 2	170	Backhoe
441	Bottle	Bottle	1	Aqua	Glass	Parking Lot	37	N 0-	5W 2	170	Backhoe
442	Bottle	Bottle	1	Aqua	Glass	Parking Lot	37	N 0-	5W 2	170	Backhoe
443	Pipe	Smoking	1	White	Kaolin	Parking Lot	37	N 0-	5W 2	170	Backhoe
444	Sherd	Bottle	1	Amber	Glass	Parking Lot	37	N 0-	5W 2	170	Backhoe
445	Shoe	Slipper	1	Brown	Leather	Parking Lot	37	N 10-	15W 1	70	Backhoe
446	Shoe, sole		1	Brown	Leather, +	Parking Lot	37	N 10-	15W 1	70	Backhoe
447	Unidentified		1		Iron	Parking Lot	50	N 40-	35W 2	140	Backhoe
448	Bolt	Carriage	1		Iron	Parking Lot	50	N 40-	35W 2	140	Backhoe
449	Fragment	Tin Can	3		Iron	Parking Lot	50	N 40-	35W 2	140	Backhoe
450	Sherd	Plate	2	White, +	Porcelain	Parking Lot	50	N 40-	35W 2	140	Backhoe
451	Sherd	Bottle	1	Brown	Glass	Parking Lot	50	N 40-	35W 2	140	Backhoe
452	Windowpane	Decorative	1	Clear	Glass	Parking Lot	50	N 40-	35W 2	140	Backhoe
453	Windowpane		5	Aqua	Glass	Parking Lot	50	N 40-	35W 1	70	Backhoe
454	Sherd	Bottle	1	Green	Glass	Parking Lot	50	N 40-	35W 1	70	Backhoe
455	Sherd	Bottle	2	Olive	Glass	Parking Lot	50	N 40-	35W 1	70	Backhoe
456	Sherd	Saucer	1	White, +	Porcelain	Parking Lot	50	N 40-	35W 1	70	Backhoe
457	Sherd	?	1	White	Porcelain	Parking Lot	50	N 40-	35W 1	70	Backhoe
458	Tile	Weeping	2	Red	Terracotta	Parking Lot	50	N 40-	35W 1	70	Backhoe
459	Brick		1	Red	Brick	Parking Lot	50	N 40-	35W 1	70	Backhoe
460	Fragment	Tin Can	6		Iron	Parking Lot	50	N 40-	35W 1	70	Backhoe
461	Cap	Bottle	1		Iron	Parking Lot	50	N 40-	35W 1	70	Backhoe
462	Foil	Package	1	Silver	Aluminum	Parking Lot	50	N 40-	35W 1	70	Backhoe
463	Lock	Door	1		Iron	Parking Lot	50	N 40-	35W 1	70	Backhoe
464	Burr	Pipe	1		Iron	Parking Lot	50	N 40-	35W 1	70	Backhoe
465	Bar Stock		1		Iron	Parking Lot	50	N 40-	35W 1	70	Backhoe



DILg-56

1988 Artifact Recoveries

Tourist Hotel Site

Catalog No.	Artifact	Artifact Type	QTY	Color	Material	General Location	Provenience Unit/Grid	Refer.	Depth Lv.	Collection Max.	
466	Wire		7		Iron	Parking Lot	50	N 40-	35W 1	70	Backhoe
467	Nail	Round	12		Iron	Parking Lot	50	N 40-	35W 1	70	Backhoe
468	Unidentified		1		Iron	Parking Lot	50	N 40-	35W 1	70	Backhoe
469	Wire		3		Iron	Parking Lot	50	N 30-	35W 1	70	Backhoe
470	Wire	Electrical	2	Black	Copper, +	Parking Lot	50	N 30-	35W 1	70	Backhoe
471	Fragment	Tin Can	1		Iron	Parking Lot	50	N 30-	35W 1	70	Backhoe
472	Nail	Square	1		Iron	Parking Lot	50	N 30-	35W 1	70	Backhoe
473	Nail	Round	1		Iron	Parking Lot	50	N 30-	35W 1	70	Backhoe
474	Nail	Round	5		Iron	Parking Lot	50	N 30-	35W 1	70	Backhoe
475	Wagon	Tongue Hitch	1		Iron	Parking Lot	50	N 30-	35W 1	70	Backhoe
476	Fragment	?	1	Black	Rubber	Parking Lot	50	N 30-	35W 1	70	Backhoe
477	Humerus	Mammal, large	1		Bone	Parking Lot	50	N 30-	35W 1	70	Backhoe
478	Femur	Mammal, large	1		Bone	Parking Lot	50	N 30-	35W 1	70	Backhoe
479	Humerus	Mammal, large	1		Bone	Parking Lot	50	N 30-	35W 1	70	Backhoe
480	Undetermined	Mammal	2		Bone	Parking Lot	50	N 30-	35W 1	70	Backhoe
481	Tile	Weeping	2	Red	Terracotta	Parking Lot	50	N 30-	35W 1	70	Backhoe
482	Sherd	Plate ?	1	White, +	Porcelain	Parking Lot	50	N 30-	35W 1	70	Backhoe
483	Sherd	Plate	1	White, +	Porcelain	Parking Lot	50	N 30-	35W 1	70	Backhoe
484	Sherd	Saucer	1	White, +	Porcelain	Parking Lot	50	N 30-	35W 1	70	Backhoe
485	Sherd	Cup	7	White	Porcelain	Parking Lot	50	N 30-	35W 1	70	Backhoe
486	Sherd	Cup ?	5	White	Porcelain	Parking Lot	50	N 30-	35W 1	70	Backhoe
487	Sherd	Bowl ?	2	White, +	Porcelain	Parking Lot	50	N 30-	35W 1	70	Backhoe
488	Sherd	Plate ?	1	White	Porcelain	Parking Lot	50	N 30-	35W 1	70	Backhoe
489	Sherd	?	1	White	Porcelain	Parking Lot	50	N 30-	35W 1	70	Backhoe
490	Sherd	?	1	White	Glass	Parking Lot	50	N 30-	35W 1	70	Backhoe
491	Sherd	Bottle	2	Green	Glass	Parking Lot	50	N 30-	35W 1	70	Backhoe
492	Sherd	Bottle	1	Olive	Glass	Parking Lot	50	N 30-	35W 1	70	Backhoe
493	Sherd	Bottle	1	Brown	Glass	Parking Lot	50	N 30-	35W 1	70	Backhoe
494	Sherd	Bottle	1	Green	Glass	Parking Lot	50	N 30-	35W 1	70	Backhoe
495	Sherd	Bottle	1	Aqua	Glass	Parking Lot	50	N 30-	35W 1	70	Backhoe
496	Sherd	Bottle	5	Clear	Glass	Parking Lot	50	N 30-	35W 1	70	Backhoe
497	Sherd	Bottle	1	Clear	Glass	Parking Lot	50	N 30-	35W 1	70	Backhoe
498	Sherd	Bottle	1	Clear	Glass	Parking Lot	50	N 30-	35W 1	70	Backhoe

DILg-56

1988 Artifact Recoveries

Tourist Hotel Site

Catalog No.	Artifact	Artifact Type	QTY	Color	Material	General Location	Provenience			Depth	Collection
							Unit/Grid	Refer.	Lv.	Max.	
499	Sherd	?	1	Clear	Glass	Parking Lot	50	N 30-	35W 1	70	Backhoe
500	Conduit	Water Pipe ?	1	White	Porcelain	Parking Lot	50	N 30-	35W 1	70	Backhoe
501	Sherd	Plate ?	2	White	Porcelain	Parking Lot	50	N 30-	35W 1	70	Backhoe
502	Sherd	?	1	Pink	Porcelain	Parking Lot	50	N 30-	35W 1	70	Backhoe
503	Sherd	Crock	1	Grey	Stoneware	Parking Lot	50	N 30-	35W 1	70	Backhoe
504	Windowpane		7	Aqua	Glass	Parking Lot	50	N 30-	35W 1	70	Backhoe
505	Sherd	Bottle ?	1	Clear	Glass	Parking Lot	50	N 30-	35W 2	130	Backhoe
506	Wire		2		Iron	Parking Lot	50	N 30-	35W 2	130	Backhoe
507	Linoleum		2	Brown, +	Canvas, +	Parking Lot	50	N 30-	35W 2	130	Backhoe
508	Stopper	Bottle	1	Aqua	Glass	Parking Lot	50	N 25-	30W 1	70	Backhoe
509	Sherd	Bottle	1	Clear	Glass	Parking Lot	50	N 25-	30W 1	70	Backhoe
510	Sherd	Bottle	1	Clear	Glass	Parking Lot	50	N 25-	30W 1	70	Backhoe
511	Sherd	Bottle	9	Clear	Glass	Parking Lot	50	N 25-	30W 1	70	Backhoe
512	Sherd	Bottle	1	Aqua	Glass	Parking Lot	50	N 25-	30W 1	70	Backhoe
513	Sherd	Bottle	1	Green	Glass	Parking Lot	50	N 25-	30W 1	70	Backhoe
514	Sherd	Bottle	1	Blue-green	Glass	Parking Lot	50	N 25-	30W 1	70	Backhoe
515	Sherd	Bottle	1	Olive	Glass	Parking Lot	50	N 25-	30W 1	70	Backhoe
516	Sherd	Bottle	1	Dark green	Glass	Parking Lot	50	N 25-	30W 1	70	Backhoe
517	Sherd	Bottle	2	Brown	Glass	Parking Lot	50	N 25-	30W 1	70	Backhoe
518	Sherd	Lamp	1	White	Glass	Parking Lot	50	N 25-	30W 1	70	Backhoe
519	Sherd	Bottle	1	Clear	Glass	Parking Lot	50	N 25-	30W 1	70	Backhoe
520	Sherd	Bottle	1	Clear	Glass	Parking Lot	50	N 25-	30W 1	70	Backhoe
521	Sherd	Bottle	1	Clear	Glass	Parking Lot	50	N 25-	30W 1	70	Backhoe
522	Sherd	Bottle	1	Clear	Glass	Parking Lot	50	N 25-	30W 1	70	Backhoe
523	Windowpane	Plate	1	Clear	Glass	Parking Lot	50	N 25-	30W 1	70	Backhoe
524	Windowpane		7	Aqua	Glass	Parking Lot	50	N 25-	30W 1	70	Backhoe
525	Toy	Soldier	1	Blue	Plastic	Parking Lot	50	N 25-	30W 1	70	Backhoe
526	Pipe	Smoking	1	White	Kaolin	Parking Lot	50	N 25-	30W 1	70	Backhoe
527	Sherd	Tea Pot ?	1	Black, +	Porcelain	Parking Lot	50	N 25-	30W 1	70	Backhoe
528	Sherd	Saucer	1	White, +	Porcelain	Parking Lot	50	N 25-	30W 1	70	Backhoe
529	Sherd	Saucer	1	White	Porcelain	Parking Lot	50	N 25-	30W 1	70	Backhoe
530	Sherd	Saucer	1	White, +	Porcelain	Parking Lot	50	N 25-	30W 1	70	Backhoe
531	Sherd	Saucer	1	White, +	Porcelain	Parking Lot	50	N 25-	30W 1	70	Backhoe

D1Lg-56

1988 Artifact Recoveries

Tourist Hotel Site

Catalog No.	Artifact	Artifact Type	QTY	Color	Material	General Location	Provenience			Depth	Collection
							Unit/Grid	Refer.	Lv.	Max.	
532	Sherd	Saucer ?	1	White, +	Porcelain	Parking Lot	50 N	25- 30W	1	70	Backhoe
533	Sherd	Cup	1	White	Porcelain	Parking Lot	50 N	25- 30W	1	70	Backhoe
534	Sherd	Plate ?	2	White	Porcelain	Parking Lot	50 N	25- 30W	1	70	Backhoe
535	Sherd	Saucer ?	1	White	Porcelain	Parking Lot	50 N	25- 30W	1	70	Backhoe
536	Sherd	Saucer ?	3	White	Porcelain	Parking Lot	50 N	25- 30W	1	70	Backhoe
537	Sherd	?	8	White	Porcelain	Parking Lot	50 N	25- 30W	1	70	Backhoe
538	Sherd	Crock	1	Grey	Stoneware	Parking Lot	50 N	25- 30W	1	70	Backhoe
539	Undetermined	Mammal, large	2		Bone	Parking Lot	50 N	25- 30W	1	70	Backhoe
540	Vertebra	Mammal, large	1		Bone	Parking Lot	50 N	25- 30W	1	70	Backhoe
541	Nail	Square	1		Iron	Parking Lot	50 N	25- 30W	1	70	Backhoe
542	Nail	Round	7		Iron	Parking Lot	50 N	25- 30W	1	70	Backhoe
543	Wire		4		Iron	Parking Lot	50 N	25- 30W	1	70	Backhoe
544	Cap	Bottle	2		Iron	Parking Lot	50 N	25- 30W	1	70	Backhoe
545	Fragment	Tin Can	1		Iron	Parking Lot	50 N	25- 30W	1	70	Backhoe
546	Fragment	Tin Can	6		Iron	Parking Lot	50 N	25- 30W	1	70	Backhoe
547	Caliper ?		1		Iron	Parking Lot	50 N	25- 30W	1	70	Backhoe
548	Nail	Square	1		Iron	Riverbank	40 N	67.5 W		90	Auger
549	Tile	Weeping	1	Red	Terracotta	Riverbank	40 N	67.5 W		90	Auger
550	Toy	Tea set ?	1	White	Porcelain	Riverbank	40 N	67.5 W		90	Auger
551	Sherd	Bowl ?	5	White	Porcelain	Riverbank	40 N	67.5 W		90	Auger
552	Sherd	Saucer ?	1	White	Porcelain	Parking Lot	31.3 N	11.3 W		90	Auger
553	Sherd	Bottle	1	Clear	Glass	Parking Lot	31.3 N	11.3 W		90	Auger
554	Windowpane		3	Aqua	Glass	Parking Lot	31.3 N	11.3 W		90	Auger
555	Nail	Round	1		Iron	Parking Lot	31.3 N	11.3 W		90	Auger
556	Long bone	Mammal, large	6		Bone	Parking Lot	31.3 N	11.3 W		90	Auger
557	Lamp	Trilight	1		Iron	Parking Lot	37 N	0- 5W	2	170	Backhoe
558	Shoe	High-laced	2	Black	Leather	Parking Lot	37 N	0- 5W	2	170	Backhoe
559	Shoe	Strap ?	2	Black	Leather	Parking Lot	37 N	0- 5W	2	170	Backhoe
560	Shoe	Slip-ons ?	1	Black	Leather	Parking Lot	37 N	0- 5W	2	170	Backhoe
561	Shoe	Slipper ?	1	Black	Rubber	Parking Lot	37 N	0- 5W	2	170	Backhoe
562	Shoe	Winter	1	Black	Leath,Felt	Parking Lot	37 N	0- 5W	2	170	Backhoe
563	Shoe	Dress	1	Black	Leather	Parking Lot	37 N	0- 5W	2	170	Backhoe
564	Shoe	Infant ?	1	Black	Leather	Parking Lot	37 N	0- 5W	2	170	Backhoe

DILg-56

1988 Artifact Recoveries

Tourist Hotel Site

Catalog No.	Artifact	Artifact Type	QTY	Color	Material	General Location	Provenience Unit/Grid	Refer.	Lv.	Depth Max.	Collector	
565	Cloth	?	1	Black	Wool ?	Parking Lot	37	N	0-	5W 2	170	Backhoe
566	Ribbon		1	Black	Silk ?	Parking Lot	37	N	0-	5W 2	170	Backhoe
567	Bark	Birch	3		Bark	Parking Lot	37	N	0-	5W 2	170	Backhoe
568	Mat ?		1		Straw	Parking Lot	37	N	0-	5W 2	170	Backhoe
569	Tile	Sewer	1	Red	Terracotta	Parking Lot	37	N	0-	5W 2	170	Backhoe
570	Foil	Lead	2		Lead	Parking Lot	37	N	0-	5W 2	170	Backhoe
571	Nail	Square	1		Iron	Parking Lot	37	N	0-	5W 2	170	Backhoe
572	Scapula	Mammal, large	1		Bone	Parking Lot	37	N	0-	5W 2	170	Backhoe
573	Femur	Mammal, large	1		Bone	Parking Lot	37	N	0-	5W 2	170	Backhoe
574	Ulna	Aves, medium	1		Bone	Parking Lot	37	N	0-	5W 2	170	Backhoe
575	Vertebra ?	Mammal, medium	1		Bone	Parking Lot	37	N	0-	5W 2	170	Backhoe
576	Spoon	Tea	1	Copper	Copper	Parking Lot	50	N	20-	25W 1	70	Backhoe
577	Nail Puller ?		1		Iron	Parking Lot	50	N	20-	25W 1	70	Backhoe
578	Wire		1		Iron	Parking Lot	50	N	20-	25W 1	70	Backhoe
579	Nail	Square	20		Iron	Parking Lot	50	N	20-	25W 1	70	Backhoe
580	Nail	Round	43		Iron	Parking Lot	50	N	20-	25W 1	70	Backhoe
581	Fragment	Tin Can	3		Iron	Parking Lot	50	N	20-	25W 1	70	Backhoe
582	Strap		1		Iron	Parking Lot	50	N	20-	25W 1	70	Backhoe
583	Wagon	Tongue	1		Iron	Parking Lot	50	N	20-	25W 1	70	Backhoe
584	Conduit	Water pipe	1		Iron	Parking Lot	50	N	20-	25W 1	70	Backhoe
585	Cap	Bottle	1		Iron	Parking Lot	50	N	20-	25W 1	70	Backhoe
586	Bark	Birch	1		Bark	Parking Lot	50	N	20-	25W 1	70	Backhoe
587	Scrap		3		Leather	Parking Lot	50	N	20-	25W 1	70	Backhoe
588	Lock	Door	1	Black	Iron	Parking Lot	50	N	20-	25W 1	70	Backhoe
589	Knife	Kitchen	1	Tan	Bone	Parking Lot	50	N	20-	25W 1	70	Backhoe
590	Radius	Mammal, large	1		Bone	Parking Lot	50	N	20-	25W 1	70	Backhoe
591	Innominate	Mammal, large	1		Bone	Parking Lot	50	N	20-	25W 1	70	Backhoe
592	Rib	Mammal, large	1		Bone	Parking Lot	50	N	20-	25W 1	70	Backhoe
593	Carpometacarpus	Aves, medium	1		Bone	Parking Lot	50	N	20-	25W 1	70	Backhoe
594	Undetermined	Mammal	1		Bone	Parking Lot	50	N	20-	25W 1	70	Backhoe
595	Valve	Oyster	2		Shell	Parking Lot	50	N	20-	25W 1	70	Backhoe
596	Coconut	Husk	1	Brown	Floral	Parking Lot	50	N	20-	25W 1	70	Backhoe
597	Hinge ?	Door ?	1		Iron	Parking Lot	50	N	20-	25W 1	70	Backhoe

06/27/83

TOURIST HOTEL HERITAGE RESOURCE IMPACT ASSESSMENT

D1Lg-56

1988 Artifact Recoveries

Tourist Hotel Site

Catalog No.	Artifact	Artifact Type	QTY	Color	Material	General Location	Provenience			Depth	Collection		
							Unit/Grid	Refer.	Lv.	Max.			
598	Slag		1	Black	Glass ?	Parking Lot	50	N	20-	25W	1	70	Backhoe
599	Sherd	Bottle	2	Brown	Glass	Parking Lot	50	N	20-	25W	1	70	Backhoe
600	Sherd	Bottle	24	Olive	Glass	Parking Lot	50	N	20-	25W	1	70	Backhoe

743

RECORDS SELECTED 300

DILg-56

1988 Artifact Recoveries

Tourist Hotel Site

Catalog No.	Artifact	Artifact Type	QTY	Color	Material	General Location	Provenience			Depth Collection		
							Unit/Grid	Refer.	Lv.	Max.		
601	Sherd	Bottle	1	Olive	Glass	Parking Lot	50	N	20-	25W 1	70	Backhoe
602	Sherd	Bottle	1	Olive	Glass	Parking Lot	50	N	20-	25W 1	70	Backhoe
603	Sherd	Bottle	1	Aqua	Glass	Parking Lot	50	N	20-	25W 1	70	Backhoe
604	Sherd	Bottle	1	Aqua	Glass	Parking Lot	50	N	20-	25W 1	70	Backhoe
605	Sherd	Bottle	1	Green	Glass	Parking Lot	50	N	20-	25W 1	70	Backhoe
606	Sherd	Bottle	1	Clear	Glass	Parking Lot	50	N	20-	25W 1	70	Backhoe
607	Sherd	Bottle	1	Clear	Glass	Parking Lot	50	N	20-	25W 1	70	Backhoe
608	Sherd	Bottle	4	Clear	Glass	Parking Lot	50	N	20-	25W 1	70	Backhoe
609	Sherd	Bottle	2	Clear	Glass	Parking Lot	50	N	20-	25W 1	70	Backhoe
610	Windowpane		5	Clear	Glass	Parking Lot	50	N	20-	25W 1	70	Backhoe
611	Sherd	Cup ?	1	White	Porcelain	Parking Lot	50	N	20-	25W 1	70	Backhoe
612	Sherd	?	1	White	Porcelain	Parking Lot	50	N	20-	25W 1	70	Backhoe
613	Sherd	?	3	White	Porcelain	Parking Lot	50	N	20-	25W 1	70	Backhoe
614	Sherd	Bowl ?	1	White	Porcelain	Parking Lot	50	N	20-	25W 1	70	Backhoe
615	Sherd	Plate	1	White	Porcelain	Parking Lot	50	N	20-	25W 1	70	Backhoe
616	Sherd	Plate ?	1	White	Porcelain	Parking Lot	50	N	20-	25W 1	70	Backhoe
617	Sherd	Plate	1	White	Porcelain	Parking Lot	50	N	20-	25W 1	70	Backhoe
618	Sherd	Crock	1	Tan, Brown	Stoneware	Parking Lot	50	N	20-	25W 1	70	Backhoe
619	Coal	Anthracite	2	Black	Coal	Parking Lot	50	N	20-	25W 1	70	Backhoe
620	Sherd	Plate	1	White +	Porcelain	Parking Lot	50	N	20-	25W 1	70	Backhoe
621	Sherd	Bottle	1	Brown	Glass	Parking Lot	50	N	20-	25W 2	135	Backhoe
622	Sherd	Bottle	2	Clear	Glass	Parking Lot	50	N	20-	25W 2	135	Backhoe
623	Sherd	Bottle ?	6	Clear	Glass	Parking Lot	50	N	20-	25W 2	135	Backhoe
624	Sherd	Bottle	2	Olive	Glass	Parking Lot	50	N	20-	25W 2	135	Backhoe
625	Sherd	Bottle	1	Clear	Glass	Parking Lot	50	N	20-	25W 2	135	Backhoe
626	Sherd	Tumbler ?	1	Clear	Glass	Parking Lot	50	N	20-	25W 2	135	Backhoe
627	Sherd	Cup	5	White +	Porcelain	Parking Lot	50	N	20-	25W 2	135	Backhoe
628	Sherd	Cup	1	White +	Porcelain	Parking Lot	50	N	20-	25W 2	135	Backhoe
629	Sherd	Saucer ?	3	Cream	Porcelain	Parking Lot	50	N	20-	25W 2	135	Backhoe
630	Sherd		1	White	Porcelain	Parking Lot	50	N	20-	25W 2	135	Backhoe
631	Sherd	?	1	White	Porcelain	Parking Lot	50	N	20-	25W 2	135	Backhoe
632	Sherd	?	1	White	Porcelain	Parking Lot	50	N	20-	25W 2	135	Backhoe
633	Sherd	?	2	White	Porcelain	Parking Lot	50	N	20-	25W 2	135	Backhoe

DILg-56

1988 Artifact Recoveries

Tourist Hotel Site

Catalog No.	Artifact	Artifact Type	QTY	Color	Material	General Location	Provenience Unit/Grid	Refer.	Depth Lv.	Collection Max.
634	Sherd	?	2	White	Porcelain	Parking Lot	50 N	20- 25W 2	135	Backhoe
635	Sherd	Cup	1	White, +	Porcelain	Parking Lot	50 N	20- 25W 2	135	Backhoe
636	Windowpane	Plate	1	Clear	Glass	Parking Lot	50 N	20- 25W 2	135	Backhoe
637	Fragment	Tin Can	4		Iron	Parking Lot	50 N	20- 25W 2	135	Backhoe
638	Wire		2		Iron	Parking Lot	50 N	20- 25W 2	135	Backhoe
639	Wire	Electrical	1	Black	Copper +	Parking Lot	50 N	20- 25W 2	135	Backhoe
640	Handle	?	1	Black	Iron	Parking Lot	50 N	20- 25W 2	135	Backhoe
641	Cap	Bottle	1		Iron	Parking Lot	50 N	20- 25W 2	135	Backhoe
642	Nail	Square	4		Iron	Parking Lot	50 N	20- 25W 2	135	Backhoe
643	Nail	Round	3		Iron	Parking Lot	50 N	20- 25W 2	135	Backhoe
644	Staple		1		Iron	Parking Lot	50 N	20- 25W 2	135	Backhoe
645	Wagon	Singletree	1		Iron	Parking Lot	50 N	20- 25W 2	135	Backhoe
646	Locket		1		Copper	Parking Lot	50 N	20- 25W 2	135	Backhoe
647	Fragment		2	Black	Rubber	Parking Lot	50 N	20- 25W 2	135	Backhoe
648	Scapula	Mammal, large	1		Bone	Parking Lot	50 N	20- 25W 2	135	Backhoe
649	Tibia	Mammal, large	1		Bone	Parking Lot	50 N	20- 25W 2	135	Backhoe
650	Radius	Rabbit	1		Bone	Parking Lot	50 N	20- 25W 2	135	Backhoe
651	Handle	Broom ?	1		Wood	Parking Lot	50 N	20- 25W 2	135	Backhoe
652	Horseshoe	Horse	1		Iron	Parking Lot	50 N	25- 30W 2	140	Backhoe
653	Wire		13		Iron	Parking Lot	50 N	25- 30W 2	140	Backhoe
654	Fragment		1	Black	Rubber	Parking Lot	50 N	25- 30W 2	140	Backhoe
655	Lid	Tin Can	1		Iron	Parking Lot	50 N	25- 30W 2	140	Backhoe
656	Sherd	Bottle	1	Brown	Glass	Parking Lot	50 N	25- 30W 2	140	Backhoe
657	Sherd	Bottle	1	Green	Glass	Parking Lot	50 N	25- 30W 2	140	Backhoe
658	Sherd	Bottle	2	Clear	Glass	Parking Lot	50 N	25- 30W 2	140	Backhoe
659	Sherd	Bottle	1	Olive	Glass	Parking Lot	50 N	25- 30W 2	140	Backhoe
660	Sherd	Bottle ?	1	Clear	Glass	Parking Lot	50 N	25- 30W 2	140	Backhoe
661	Sherd	Tumbler ?	1	Clear, +	Glass	Parking Lot	50 N	25- 30W 2	140	Backhoe
662	Sherd	?	1	White	Glass	Parking Lot	50 N	25- 30W 2	140	Backhoe
663	Sherd	Saucer ?	2	White	Porcelain	Parking Lot	50 N	25- 30W 2	140	Backhoe
664	Sherd	Saucer ?	2	White, +	Porcelain	Parking Lot	50 N	25- 30W 2	140	Backhoe
665	Sherd	Saucer	5	White, +	Porcelain	Parking Lot	50 N	25- 30W 2	140	Backhoe
666	Insulator	House Wiring	1	White	Porcelain	Parking Lot	50 N	25- 30W 2	140	Backhoe

DILg-56

1988 Artifact Recoveries

Tourist Hotel Site

Catalog No.	Artifact	Artifact Type	QTY	Color	Material	General Location	Provenience				Depth Collection		
							Unit/	Grid	Refer.	Lv.	Max.		
667	Insulator	House Wiring	1	Brown	Porcelain	Parking Lot	50	N	25-	30W	2	140	Backhoe
668	Windowpane		1	Aqua	Glass	Parking Lot	50	N	25-	30W	2	140	Backhoe
669	Bark	Birch	1	Brown	Bark	Parking Lot	50	N	25-	30W	2	140	Backhoe
670	Pencil	Lead	1	Purple	Wood	Parking Lot	50	N	25-	30W	2	140	Backhoe
671	Nail	Round	6		Iron	Parking Lot	50	N	25-	30W	2	140	Backhoe
672	Bridle	Horse	1		Iron	Parking Lot	50	N	25-	30W	2	140	Backhoe
673	Conduit	Water Pipe	2		Iron	Parking Lot	50	N	25-	30W	2	140	Backhoe
674	Coat ?	Lining ?	1	Black	Sateen	Parking Lot	50	N	25-	30W	2	140	Backhoe
675	Fragment	Tin Can	5		Iron	Parking Lot	50	N	25-	30W	2	140	Backhoe
676	Scrap		3		Iron	Parking Lot	50	N	25-	30W	2	140	Backhoe
677	Unidentified		1		Iron	Parking Lot	50	N	25-	30W	2	140	Backhoe
678	Fragment		1	White	Rubber	Parking Lot	50	N	25-	30W	2	140	Backhoe
679	Rubber Ring ?	Canning Sealer ?	1	Red	Rubber	Parking Lot	50	N	25-	30W	2	140	Backhoe
680	License Plate	Automotive	1	White, Blk	Iron,Paint	Parking Lot	50	N	25-	30W	2	140	Backhoe
681	Femur	Mammal, large	1		Bone	Parking Lot	50	N	25-	30W	2	140	Backhoe
682	Sherd	Bottle	1	Green	Glass	Parking Lot	50	N	15-	20W	2	125	Backhoe
683	Sherd	Bottle	2	Brown	Glass	Parking Lot	50	N	15-	20W	2	125	Backhoe
684	Sherd	Bottle	1	Brown	Glass	Parking Lot	50	N	15-	20W	2	125	Backhoe
685	Sherd	Bottle	1	Olive	Glass	Parking Lot	50	N	15-	20W	2	125	Backhoe
686	Sherd	Bottle	1	Green	Glass	Parking Lot	50	N	15-	20W	2	125	Backhoe
687	Sherd	Bottle	1	Amber	Glass	Parking Lot	50	N	15-	20W	2	125	Backhoe
688	Sherd	Bottle	1	Aqua	Glass	Parking Lot	50	N	15-	20W	2	125	Backhoe
689	Sherd	Bottle	1	Aqua	Glass	Parking Lot	50	N	15-	20W	2	125	Backhoe
690	Sherd	Bottle	2	Clear	Glass	Parking Lot	50	N	15-	20W	2	125	Backhoe
691	Sherd	Saucer	1	White, +	Porcelain	Parking Lot	50	N	15-	20W	2	125	Backhoe
692	Sherd	Plate ?	1	White, +	Porcelain	Parking Lot	50	N	15-	20W	2	125	Backhoe
693	Sherd	Vegetable dish ?	1	White, +	Porcelain	Parking Lot	50	N	15-	20W	2	125	Backhoe
694	Sherd	?	1	White	Porcelain	Parking Lot	50	N	15-	20W	2	125	Backhoe
695	Sherd	?	2	White	Glass	Parking Lot	50	N	15-	20W	2	125	Backhoe
696	Fragment	?	1	Yellow	Plastic	Parking Lot	50	N	15-	20W	2	125	Backhoe
697	Tile	Weeping	1	Red	Terracotta	Parking Lot	50	N	15-	20W	2	125	Backhoe
698	Shoe, heel	?	1	Black	Leather	Parking Lot	50	N	15-	20W	2	125	Backhoe
699	Scrap		3	Black	Leather	Parking Lot	50	N	15-	20W	2	125	Backhoe



DILg-56

1988 Artifact Recoveries

Tourist Hotel Site

Catalog No.	Artifact	Artifact Type	QTY	Color	Material	General Location	Provenience				Depth	Collection	
							Unit/Grid	Refer.	Lv.	Max.			
700	Lock	Door	1	Black	Iron	Parking Lot	50	N	15-	20W	2	125	Backhoe
701	Nail	Square	3		Iron	Parking Lot	50	N	15-	20W	2	125	Backhoe
702	Nail	Round	5		Iron	Parking Lot	50	N	15-	20W	2	125	Backhoe
703	Wire		1		Iron	Parking Lot	50	N	15-	20W	2	125	Backhoe
704	Fragment	Tin Can	3		Iron	Parking Lot	50	N	15-	20W	2	125	Backhoe
705	Femur ?	Mammal, large	1		Bone	Parking Lot	50	N	15-	20W	2	125	Backhoe
706	Sherd	Bottle	1	Green	Glass	Parking Lot	50	N	15-	20W	2	125	Backhoe
707	Sherd	Bottle	4	Brown	Glass	Parking Lot	50	N	12-	15W	2	110	Backhoe
708	Sherd	Bowl ?	1	Clear	Glass	Parking Lot	50	N	12-	15W	2	110	Backhoe
709	Sherd	Bottle	1	Clear	Glass	Parking Lot	50	N	12-	15W	2	110	Backhoe
710	Sherd	Bottle	1	Clear, +	Glass	Parking Lot	50	N	12-	15W	2	110	Backhoe
711	Sherd	Bottle	1	Aqua	Glass	Parking Lot	50	N	12-	15W	2	110	Backhoe
712	Sherd	Bottle	16	Aqua	Glass	Parking Lot	50	N	12-	15W	2	110	Backhoe
713	Sherd	Bottle	1	Aqua	Glass	Parking Lot	50	N	12-	15W	2	110	Backhoe
714	Sherd	Bottle	4	Olive	Glass	Parking Lot	50	N	12-	15W	2	110	Backhoe
715	Sherd	Bottle	14	Olive	Glass	Parking Lot	50	N	12-	15W	2	110	Backhoe
716	Sherd	Bottle	1	Dark green	Glass	Parking Lot	50	N	12-	15W	2	110	Backhoe
717	Sherd	Bottle	3	Green	Glass	Parking Lot	50	N	12-	15W	2	110	Backhoe
718	Sherd	Bottle	1	Green	Glass	Parking Lot	50	N	12-	15W	2	110	Backhoe
719	Sherd	Bottle	2	Pale green	Glass	Parking Lot	50	N	12-	15W	2	110	Backhoe
720	Sherd	Bottle	1	Aqua	Glass	Parking Lot	50	N	12-	15W	2	110	Backhoe
721	Sherd	Tumbler ?	2	Clear	Glass	Parking Lot	50	N	12-	15W	2	110	Backhoe
722	Windowpane		5	Aqua	Glass	Parking Lot	50	N	12-	15W	2	110	Backhoe
723	Sherd	Tea Pot ?	4	Green	Porcelain	Parking Lot	50	N	12-	15W	2	110	Backhoe
724	Sherd	?	1	White	Porcelain	Parking Lot	50	N	12-	15W	2	110	Backhoe
725	Sherd	Figurine ?	1	Pink	Porcelain	Parking Lot	50	N	12-	15W	2	110	Backhoe
726	Valve	Oyster	1		Shell	Parking Lot	50	N	12-	15W	2	110	Backhoe
727	Scrap		1		Leather	Parking Lot	50	N	12-	15W	2	110	Backhoe
728	Nail	Round	5		Iron	Parking Lot	50	N	12-	15W	2	110	Backhoe
729	Nail	Square	3		Iron	Parking Lot	50	N	12-	15W	2	110	Backhoe
730	Can Opener	Key Style	1		Iron	Parking Lot	50	N	12-	15W	2	110	Backhoe
731	Handle	Broom ?	1		Wood	Parking Lot	50	N	12-	15W	2	110	Backhoe
732	Tile	Weeping	1	Red	Terracotta	Parking Lot	50	N	12-	15W	1	70	Backhoe

DILg-56

1988 Artifact Recoveries

Tourist Hotel Site

Catalog No.	Artifact	Artifact Type	QTY	Color	Material	General Location	Provenience			Depth	Collector	
							Unit/Grid	Refer.	Lv. Max.			
733	Sherd	Bottle	33	Green	Glass	Parking Lot	50	N	12- 15W	1	70	Backhoe
734	Sherd	Bottle	1	Aqua	Glass	Parking Lot	50	N	12- 15W	1	70	Backhoe
735	Sherd	Bottle	1	Olive	Glass	Parking Lot	50	N	12- 15W	1	70	Backhoe
736	Sherd	Bottle	1	Aqua	Glass	Parking Lot	50	N	12- 15W	1	70	Backhoe
737	Sherd	Bottle	3	Brown	Glass	Parking Lot	50	N	12- 15W	1	70	Backhoe
738	Sherd	Bottle	1	Green	Glass	Parking Lot	50	N	12- 15W	1	70	Backhoe
739	Sherd	Bottle	2	Olive	Glass	Parking Lot	50	N	12- 15W	1	70	Backhoe
740	Sherd	Bottle	1	Olive	Glass	Parking Lot	50	N	12- 15W	1	70	Backhoe
741	Sherd	Bottle	17	Olive	Glass	Parking Lot	50	N	12- 15W	1	70	Backhoe
742	Sherd	Bottle	3	Aqua	Glass	Parking Lot	50	N	12- 15W	1	70	Backhoe
743	Sherd	Bottle	4	Aqua	Glass	Parking Lot	50	N	12- 15W	1	70	Backhoe
744	Sherd	Bottle	8	Aqua	Glass	Parking Lot	50	N	12- 15W	1	70	Backhoe
745	Sherd	Bottle	9	Aqua	Glass	Parking Lot	50	N	12- 15W	1	70	Backhoe
746	Sherd	Bottle	2	Green	Glass	Parking Lot	50	N	12- 15W	1	70	Backhoe
747	Sherd	Bottle	5	Green	Glass	Parking Lot	50	N	12- 15W	1	70	Backhoe
748	Sherd	Bottle	3	Brown	Glass	Parking Lot	50	N	12- 15W	1	70	Backhoe
749	Sherd	Bottle	16	Clear	Glass	Parking Lot	50	N	12- 15W	1	70	Backhoe
750	Sherd	Bottle	9	Pale green	Glass	Parking Lot	50	N	12- 15W	1	70	Backhoe
751	Sherd	Tumbler	1	Clear	Glass	Parking Lot	50	N	12- 15W	1	70	Backhoe
752	Sherd	Wine glass ?	6	Clear	Glass	Parking Lot	50	N	12- 15W	1	70	Backhoe
753	Sherd	Bottle	1	Aqua	Glass	Parking Lot	50	N	12- 15W	1	70	Backhoe
754	Sherd	Bottle	1	Aqua	Glass	Parking Lot	50	N	12- 15W	1	70	Backhoe
755	Sherd	Bottle	1	Aqua	Glass	Parking Lot	50	N	12- 15W	1	70	Backhoe
756	Sherd	Bottle	1	Olive	Glass	Parking Lot	50	N	12- 15W	1	70	Backhoe
757	Sherd	Bottle	6	Olive	Glass	Parking Lot	50	N	12- 15W	1	70	Backhoe
758	Sherd	Bottle	1	Aqua	Glass	Parking Lot	50	N	12- 15W	1	70	Backhoe
759	Stopper	Bottle	1	Aqua	Glass	Parking Lot	50	N	12- 15W	1	70	Backhoe
760	Sherd	Lamp	1	Clear	Glass	Parking Lot	50	N	12- 15W	1	70	Backhoe
761	Sherd	Tumbler	2	Clear	Glass	Parking Lot	50	N	12- 15W	1	70	Backhoe
762	Sherd	Bottle	1	Clear	Glass	Parking Lot	50	N	12- 15W	1	70	Backhoe
763	Sherd	Bottle	1	Clear	Glass	Parking Lot	50	N	12- 15W	1	70	Backhoe
764	Sherd	?	4	Clear	Glass	Parking Lot	50	N	12- 15W	1	70	Backhoe
765	Sherd	Bottle	1	Clear, +	Glass	Parking Lot	50	N	12- 15W	1	70	Backhoe

D1Lg-56

1988 Artifact Recoveries

Tourist Hotel Site

Catalog No.	Artifact	Artifact Type	QTY	Color	Material	General Location	Provenience Unit/Grid	Refer.	Depth Lv.	Collection Max.
766	Sherd	Ornament ?	1	Clear	Glass	Parking Lot	50 N	12- 15W	1	70 Backhoe
767	Sherd	Lamp	1	Clear	Glass	Parking Lot	50 N	12- 15W	1	70 Backhoe
768	Windowpane		12	Aqua	Glass	Parking Lot	50 N	12- 15W	1	70 Backhoe
769	Cap	Bottle	1		Iron	Parking Lot	50 N	12- 15W	1	70 Backhoe
770	Cork	Bottle	1	Brown	Cork	Parking Lot	50 N	12- 15W	1	70 Backhoe
771	Seal	Bottle	1	Bronze	Copper ?	Parking Lot	50 N	12- 15W	1	70 Backhoe
772	Wire		2		Iron	Parking Lot	50 N	12- 15W	1	70 Backhoe
773	Fragment	Tin Can	2		Iron	Parking Lot	50 N	12- 15W	1	70 Backhoe
774	Lock	Door	1		Iron	Parking Lot	50 N	12- 15W	1	70 Backhoe
775	Stopper	Bottle	2		Iron	Parking Lot	50 N	12- 15W	1	70 Backhoe
776	Screen		1		Iron	Parking Lot	50 N	12- 15W	1	70 Backhoe
777	Toy ?	Mechanical ?	1		Iron	Parking Lot	50 N	12- 15W	1	70 Backhoe
778	Innominate	Aves, medium	1		Bone	Parking Lot	50 N	12- 15W	1	70 Backhoe
779	Vertebra	Mammal, large	3		Bone	Parking Lot	50 N	12- 15W	1	70 Backhoe
780	Femur ?	Mammal, large	1		Bone	Parking Lot	50 N	12- 15W	1	70 Backhoe
781	Rib	Mammal, large	4		Bone	Parking Lot	50 N	12- 15W	1	70 Backhoe
782	Rib	Mammal, medium ?	1		Bone	Parking Lot	50 N	12- 15W	1	70 Backhoe
783	Metapodial	Mammal, large	1		Bone	Parking Lot	50 N	12- 15W	1	70 Backhoe
784	Femur	Aves, medium	1		Bone	Parking Lot	50 N	12- 15W	1	70 Backhoe
785	Valve	Oyster	3		Shell	Parking Lot	50 N	12- 15W	1	70 Backhoe
786	Seed	Peach	1		Floral	Parking Lot	50 N	12- 15W	1	70 Backhoe
787	Coconut	Husk	1	Brown	Floral	Parking Lot	50 N	12- 15W	1	70 Backhoe
788	Strap		1		Iron	Parking Lot	50 N	12- 15W	1	70 Backhoe
789	Nail	Round	8		Iron	Parking Lot	50 N	12- 15W	1	70 Backhoe
790	Nail	Square	14		Iron	Parking Lot	50 N	12- 15W	1	70 Backhoe
791	Clevis Pin	Eye-bolt	1		Iron	Parking Lot	50 N	12- 15W	1	70 Backhoe
792	Tin Can	Tin Can	1		Iron	Parking Lot	50 N	12- 15W	1	70 Backhoe
793	Rod	Automotive	1		Iron	Parking Lot	50 N	12- 15W	1	70 Backhoe
794	Sherd	Cup ?	1	White, +	Porcelain	Parking Lot	50 N	12- 15W	1	70 Backhoe
795	Sherd	Plate	1	White, +	Porcelain	Parking Lot	50 N	12- 15W	1	70 Backhoe
796	Sherd	Saucer	1	White, +	Porcelain	Parking Lot	50 N	12- 15W	1	70 Backhoe
797	Sherd	Plate ?	1	White, +	Porcelain	Parking Lot	50 N	12- 15W	1	70 Backhoe
798	Sherd	Bowl ?	1	White	Porcelain	Parking Lot	50 N	12- 15W	1	70 Backhoe

DILg-56

1988 Artifact Recoveries

Tourist Hotel Site

Catalog No.	Artifact	Artifact Type	QTY	Color	Material	General Location	Provenience			Depth	Collection		
							Unit/Grid	Refer.	Lv.	Max.			
799	Sherd	Saucer	1	White	Porcelain	Parking Lot	50	N	12-	15W	1	70	Backhoe
800	Sherd	?	10	White	Porcelain	Parking Lot	50	N	12-	15W	1	70	Backhoe
801	Pipe	Smoking	1	White	Kaolin	Parking Lot	50	N	12-	15W	1	70	Backhoe
802	Sherd	Plate ?	2	White	Porcelain	Parking Lot	50	N	15-	20W	1	70	Backhoe
803	Sherd	Plate	3	White	Porcelain	Parking Lot	50	N	15-	20W	1	70	Backhoe
804	Sherd	Plate	1	White, +	Porcelain	Parking Lot	50	N	15-	20W	1	70	Backhoe
805	Sherd	Plate	1	White, +	Porcelain	Parking Lot	50	N	15-	20W	1	70	Backhoe
806	Sherd	Plate	1	White, +	Porcelain	Parking Lot	50	N	15-	20W	1	70	Backhoe
807	Sherd	Saucer	1	White	Porcelain	Parking Lot	50	N	15-	20W	1	70	Backhoe
808	Sherd	Saucer	10	White	Porcelain	Parking Lot	50	N	15-	20W	1	70	Backhoe
809	Sherd	Bowl	1	White	Porcelain	Parking Lot	50	N	15-	20W	1	70	Backhoe
810	Sherd	Bowl ?	1	White	Porcelain	Parking Lot	50	N	15-	20W	1	70	Backhoe
811	Sherd	Cup	6	White	Porcelain	Parking Lot	50	N	15-	20W	1	70	Backhoe
812	Sherd	Cup	2	White	Porcelain	Parking Lot	50	N	15-	20W	1	70	Backhoe
813	Sherd	Cup	1	White	Porcelain	Parking Lot	50	N	15-	20W	1	70	Backhoe
814	Sherd	?	21	White	Porcelain	Parking Lot	50	N	15-	20W	1	70	Backhoe
815	Sherd	Flowerpot	2	Red	Terracotta	Parking Lot	50	N	15-	20W	1	70	Backhoe
816	Pipe	Smoking	5	White	Kaolin	Parking Lot	50	N	15-	20W	1	70	Backhoe
817	Pipe	Smoking	1	White	Kaolin	Parking Lot	50	N	15-	20W	1	70	Backhoe
818	Pipe	Smoking	1	White	Kaolin	Parking Lot	50	N	15-	20W	1	70	Backhoe
819	Sherd	Bottle	1	Olive	Glass	Parking Lot	50	N	15-	20W	1	70	Backhoe
820	Sherd	Bottle	1	Amber	Glass	Parking Lot	50	N	15-	20W	1	70	Backhoe
821	Sherd	Bottle	1	Green	Glass	Parking Lot	50	N	15-	20W	1	70	Backhoe
822	Sherd	Bottle	17	Green	Glass	Parking Lot	50	N	15-	20W	1	70	Backhoe
823	Sherd	Bottle	3	Aqua	Glass	Parking Lot	50	N	15-	20W	1	70	Backhoe
824	Sherd	Bottle	1	Clear	Glass	Parking Lot	50	N	15-	20W	1	70	Backhoe
825	Sherd	Bottle	7	Clear	Glass	Parking Lot	50	N	15-	20W	1	70	Backhoe
826	Sherd	Bottle	1	Amethyst	Glass	Parking Lot	50	N	15-	20W	1	70	Backhoe
827	Sherd	Bottle	1	Clear	Glass	Parking Lot	50	N	15-	20W	1	70	Backhoe
828	Sherd	Bottle	1	Clear	Glass	Parking Lot	50	N	15-	20W	1	70	Backhoe
829	Sherd	Tumbler	1	Clear	Glass	Parking Lot	50	N	15-	20W	1	70	Backhoe
830	Sherd	Tumbler	1	Clear	Glass	Parking Lot	50	N	15-	20W	1	70	Backhoe
831	Sherd	Tumbler	6	Clear	Glass	Parking Lot	50	N	15-	20W	1	70	Backhoe

D1Lg-56

1988 Artifact Recoveries

Tourist Hotel Site

Catalog No.	Artifact	Artifact Type	QTY	Color	Material	General Location	Provenience Unit/Grid	Refer.	Depth Lv.	Collection Max.
832	Sherd	Jug ?	9	Brown	Stoneware	Parking Lot	50 N	15- 20W	1	70 Backhoe
833	Sherd	Crock	1	Grey, Brown	Stoneware	Parking Lot	50 N	15- 20W	1	70 Backhoe
834	Sherd	Pickle Jar	6	Grey, Brown	Stoneware	Parking Lot	50 N	15- 20W	1	70 Backhoe
835	Sherd	Ash Tray	1	Yellow, +	Porcelain	Parking Lot	50 N	15- 20W	1	70 Backhoe
836	Sherd	Plate ?	2	White, +	Porcelain	Parking Lot	50 N	15- 20W	1	70 Backhoe
837	Sherd	?	1	White, +	Porcelain	Parking Lot	50 N	15- 20W	1	70 Backhoe
838	Sherd	?	1	White, +	Porcelain	Parking Lot	50 N	15- 20W	1	70 Backhoe
839	Button	Four-hole	1	White	Glass	Parking Lot	50 N	15- 20W	1	70 Backhoe
840	Sherd	Bottle	2	Olive	Glass	Parking Lot	50 N	15- 20W	1	70 Backhoe
841	Sherd	Bottle	2	Olive	Glass	Parking Lot	50 N	15- 20W	1	70 Backhoe
842	Sherd	Bottle	16	Olive	Glass	Parking Lot	50 N	15- 20W	1	70 Backhoe
843	Sherd	Bottle	7	Green	Glass	Parking Lot	50 N	15- 20W	1	70 Backhoe
844	Sherd	Bottle	6	Aqua	Glass	Parking Lot	50 N	15- 20W	1	70 Backhoe
845	Sherd	Bottle	4	Aqua	Glass	Parking Lot	50 N	15- 20W	1	70 Backhoe
846	Sherd	Bottle	2	Pale green	Glass	Parking Lot	50 N	15- 20W	1	70 Backhoe
847	Sherd	Bottle	16	Clear	Glass	Parking Lot	50 N	15- 20W	1	70 Backhoe
848	Sherd	Bottle	1	Clear	Glass	Parking Lot	50 N	15- 20W	1	70 Backhoe
849	Sherd	Bottle	2	Clear	Glass	Parking Lot	50 N	15- 20W	1	70 Backhoe
850	Sherd	Bottle	1	Clear	Glass	Parking Lot	50 N	15- 20W	1	70 Backhoe
851	Sherd	Bottle	1	Clear	Glass	Parking Lot	50 N	15- 20W	1	70 Backhoe
852	Sherd, Cork	Bottle	1	Aqua	Glass, Cork	Parking Lot	50 N	15- 20W	1	70 Backhoe
853	Sherd	Bottle	1	Brown	Glass	Parking Lot	50 N	15- 20W	1	70 Backhoe
854	Sherd	Bottle	8	Brown	Glass	Parking Lot	50 N	15- 20W	1	70 Backhoe
855	Sherd	Bottle	1	Green	Glass	Parking Lot	50 N	15- 20W	1	70 Backhoe
856	Sherd	Bottle	1	Aqua	Glass	Parking Lot	50 N	15- 20W	1	70 Backhoe
857	Sherd	Bottle ?	1	Clear	Glass	Parking Lot	50 N	15- 20W	1	70 Backhoe
858	Sherd	Bottle ?	1	Aqua	Glass	Parking Lot	50 N	15- 20W	1	70 Backhoe
859	Sherd	Bottle	1	Aqua	Glass	Parking Lot	50 N	15- 20W	1	70 Backhoe
860	Stopper	Bottle	1	Aqua	Glass	Parking Lot	50 N	15- 20W	1	70 Backhoe
861	Lid	Jar ?	1	White	Glass	Parking Lot	50 N	15- 20W	1	70 Backhoe
862	Sherd	Lamp	1	Clear	Glass	Parking Lot	50 N	15- 20W	1	70 Backhoe
863	Windowpane		28	Aqua	Glass	Parking Lot	50 N	15- 20W	1	70 Backhoe
864	Windowpane	Decorative	1	Aqua	Glass	Parking Lot	50 N	15- 20W	1	70 Backhoe

DILg-56

1988 Artifact Recoveries

Tourist Hotel Site

Catalog No.	Artifact	Artifact Type	QTY	Color	Material	General Location	Provenience				Depth	Collection
							Unit/Grid	Refer.	Lv.	Max.		
865	Slag		5	Black	Glass ?	Parking Lot	50 N	15-	20W	1	70	Backhoe
866	Cloth		1	Brown	Cotton ?	Parking Lot	50 N	15-	20W	1	70	Backhoe
867	Cloth		1	Black	Cotton ?	Parking Lot	50 N	15-	20W	1	70	Backhoe
868	Humerus	Mammal, large	1		Bone	Parking Lot	50 N	15-	20W	1	70	Backhoe
869	Radius	Mammal, large	1		Bone	Parking Lot	50 N	15-	20W	1	70	Backhoe
870	Tibia ?	Mammal, large	1		Bone	Parking Lot	50 N	15-	20W	1	70	Backhoe
871	Vertebra	Mammal, large	2		Bone	Parking Lot	50 N	15-	20W	1	70	Backhoe
872	Scapula	Mammal, large	1		Bone	Parking Lot	50 N	15-	20W	1	70	Backhoe
873	Rib	Mammal, large	6		Bone	Parking Lot	50 N	15-	20W	1	70	Backhoe
874	Rib	Mammal, medium	6		Bone	Parking Lot	50 N	15-	20W	1	70	Backhoe
875	Calcaneus	Mammal, medium	1		Bone	Parking Lot	50 N	15-	20W	1	70	Backhoe
876	Tibia	Mammal, medium	1		Bone	Parking Lot	50 N	15-	20W	1	70	Backhoe
877	Undetermined	Mammal	5		Bone	Parking Lot	50 N	15-	20W	1	70	Backhoe
878	Vertebra	Fish	1		Bone	Parking Lot	50 N	15-	20W	1	70	Backhoe
879	Valve	Oyster	11		Shell	Parking Lot	50 N	15-	20W	1	70	Backhoe
880	Nut	Acorn	1		Floral	Parking Lot	50 N	15-	20W	1	70	Backhoe
881	Coconut	Husk	1		Floral	Parking Lot	50 N	15-	20W	1	70	Backhoe
882	Tile	Weeping	2	Red	Terracotta	Parking Lot	50 N	15-	20W	1	70	Backhoe
883	Linoleum		1	Brown	Canvas, +	Parking Lot	50 N	15-	20W	1	70	Backhoe
884	Tibiotarsus	Aves, medium	1		Bone	Parking Lot	50 N	15-	20W	1	70	Backhoe
885	Peg	?	1	Brown	Wood	Parking Lot	50 N	15-	20W	1	70	Backhoe
886	Knife	Kitchen ?	1		Iron	Parking Lot	50 N	15-	20W	1	70	Backhoe
887	Fragment	Tin Can	8		Iron	Parking Lot	50 N	15-	20W	1	70	Backhoe
888	Egg Beater	Whisk ?	1		Iron	Parking Lot	50 N	15-	20W	1	70	Backhoe
889	Pail	Wooden	1	Brown	Wood, Iron	Parking Lot	50 N	15-	20W	1	70	Backhoe
890	Horseshoe	Horse	1		Iron	Parking Lot	50 N	15-	20W	1	70	Backhoe
891	Fragment	Tin Can	1		Iron	Parking Lot	50 N	15-	20W	1	70	Backhoe
892	Chisel	Biface	1		Iron	Parking Lot	50 N	15-	20W	1	70	Backhoe
893	Unidentified	Harness ?	1		Iron	Parking Lot	50 N	15-	20W	1	70	Backhoe
894	Clothes Peg	Wooden	2	Brown	Wood	Parking Lot	50 N	15-	20W	1	70	Backhoe
895	Shoe	Fragments	10	Black	Leather	Parking Lot	50 N	15-	20W	1	70	Backhoe
896	Nail	Round	33		Iron	Parking Lot	50 N	15-	20W	1	70	Backhoe
897	Nail	Square	54		Iron	Parking Lot	50 N	15-	20W	1	70	Backhoe

06/28/83

TOURIST HOTEL HERITAGE RESOURCE IMPACT ASSESSMENT

Page 1

D1Lg-56

1988 Artifact Recoveries

Tourist Hotel Site

Catalog No.	Artifact	Artifact Type	QTY	Color	Material	General Location	Provenience Unit/Grid Refer.				Depth Lv.	Collection Max.	
898	Bolt	Machine	1		Iron	Parking Lot	50	N	15-	20W	1	70	Backhoe
899	Screw	Wood	1		Iron	Parking Lot	50	N	15-	20W	1	70	Backhoe
900	Foil	Lead	1	Black	Lead	Parking Lot	50	N	15-	20W	1	70	Backhoe

896

RECORDS SELECTED 300

06/28/83

## TOURIST HOTEL HERITAGE RESOURCE IMPACT ASSESSMENT

Page

D1Lg-56

1988 Artifact Recoveries

Tourist Hotel Site

Catalog No.	Artifact	Artifact Type	QTY	Color	Material	General Location	Provenience Unit/Grid	Refer.	Lv.	Max.	Depth	Collection
901	Scrap		27	Black	Leather	Parking Lot	50 N 15-	20W	1	70	Backhoe	
902	Scrap		4		Iron	Parking Lot	50 N 15-	20W	1	70	Backhoe	
903	Wire		1		Iron	Parking Lot	50 N 15-	20W	1	70	Backhoe	
904	Nail, Strap	Square	1		Iron	Parking Lot	50 N 15-	20W	1	70	Backhoe	
905	Nail, Board	Square	1		Iron, Wood	Parking Lot	50 N 15-	20W	1	70	Backhoe	
906	Board	Lumber	1		Wood	Parking Lot	50 N 15-	20W	1	70	Backhoe	
907	Board	Lumber	1		Wood	Parking Lot	50 N 15-	20W	1	70	Backhoe	
908	Cork	Bottle	2	Brown	Cork	Parking Lot	50 N 15-	20W	1	70	Backhoe	
909	Fragment	Squeeze Tube	1		Iron	Parking Lot	50 N 15-	20W	1	70	Backhoe	
910	Thong		1	Brown	Rawhide	Parking Lot	50 N 15-	20W	1	70	Backhoe	
911	Ribbon		1	Black	Silk ?	Parking Lot	50 N 15-	20W	1	70	Backhoe	
912	Linkage ?	Automotive	1		Iron	Parking Lot	50 N 15-	20W	1	70	Backhoe	

42

RECORDS SELECTED 12