



CN STAGE AND FIELD

The CN Stage and Field offer versatile, dynamic outdoor event spaces perfect for hosting a range of community events, performances, and large gatherings. The CN Stage, a covered performance area, provides a concrete platform with built-in lighting, ideal for concerts, festivals, presentations, or a variety of community activations. The CN Field is a vast green space that accommodates large crowds and flexible layouts, making it suitable for everything from festivals to cultural events and family activities. The CN Stage and Field can be booked together to accommodate full-capacity events, or separately offering flexible options to suit a variety of event sizes.

CAPACITY

The CN Stage accommodates 1,300 guests, including the paved patio area directly in front of the stage, extending beneath the iconic WINNIPEG sign, ideal for mid-sized gatherings, concerts, and community events, allowing for an immersive experience within a spacious outdoor setting.

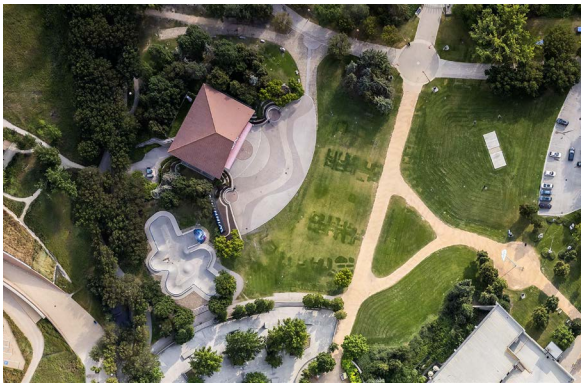
The CN Field accommodates up to 8,700 guests, providing an expansive green space suitable for large-scale events, festivals, and gatherings.

AMENITIES

- Power access (equipment not included)
- Access to water is included
- Vehicle access available for load-in/out
- For larger events, an electrician may be required and additional costs should be considered
- Greenroom space available at an additional cost



Winter programming in at CN Stage and Field



Aerial view of CN Stage and Field, showing the paved area in front of the Stage and the paths located in the Field area



CN Stage used for Play at The Forks programming in the summer

If you are interested in booking this space, please complete the [application form](#) to receive a cost estimate. If you have questions about this space or general events at The Forks, please contact our events team at events@theforks.com.

